

VORTAC RIC <b>114.1</b> Chan <b>88</b>	APP CRS <b>188°</b>	Rwy Idg TDZE <b>167</b> Apt Elev <b>167</b>	<b>6607</b>
--	------------------------	---	-------------

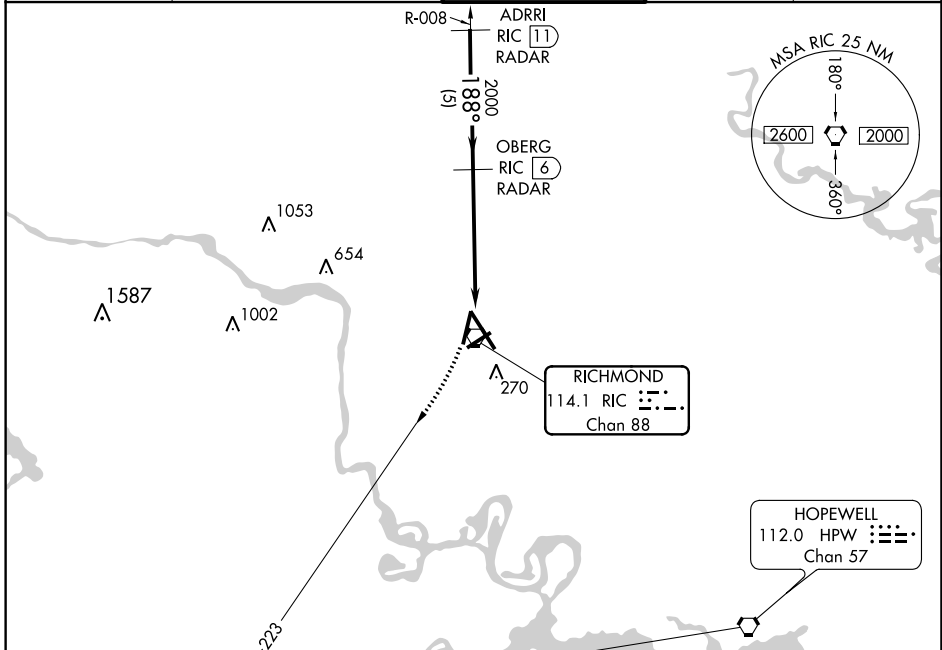
# VOR RWY 20

RICHMOND INTL (RIC)

**▼ DME or RADAR REQUIRED.**  
Visibility reduction by helicopters NA.

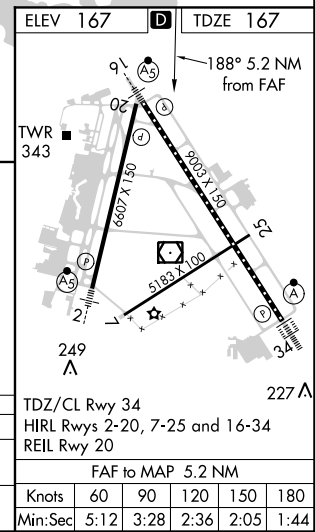
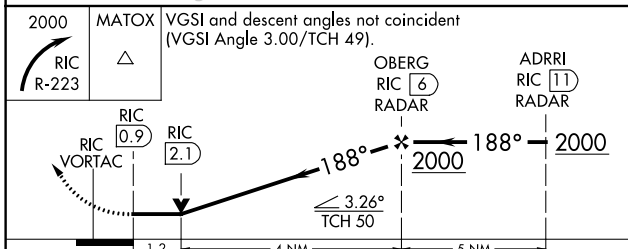
MISSED APPROACH: Climbing right turn to 2000 via RIC R-223 to MATOX INT/ RIC 16.3 DME and hold.

ATIS <b>119.15 263.025</b>	POTOMAC APP CON <b>126.4 282.375</b> (001°-185°) <b>126.75 307.2</b> (186°-360°)	RICHMOND TOWER <b>121.1 257.8</b>	GND CON <b>121.9 348.6</b>	CLNC DEL <b>127.55 348.6</b>
-------------------------------	--	--------------------------------------	-------------------------------	---------------------------------



NE-3, 31 JAN 2019 to 28 FEB 2019

NE-3, 31 JAN 2019 to 28 FEB 2019



CATEGORY	A	B	C	D
S-20	640-1 473 (500-1)		640-1½ 473 (500-1½)	640-1½ 473 (500-1½)
CIRCLING	660-1 493 (500-1)		660-1½ 493 (500-1½)	720-2 553 (600-2)