

VORTAC RIC	APP CRS	Rwy Idg	5183
114.1	254°	TDZE	160
Chan 88		Apt Elev	167

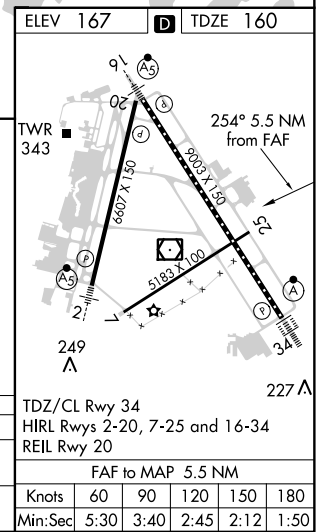
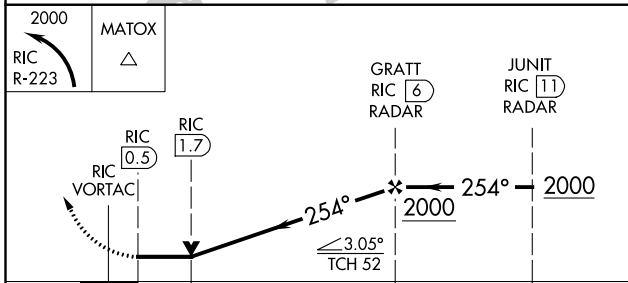
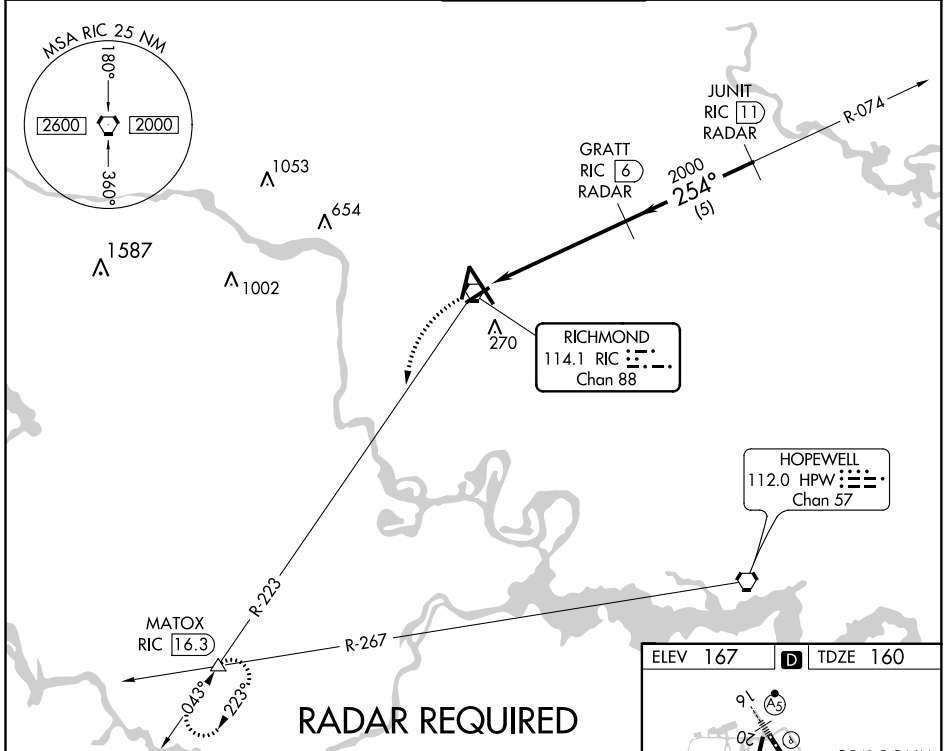
VOR RWY 25

RICHMOND INTL (RIC)

DME or RADAR REQUIRED.
 Visibility reduction by helicopters NA.

MISSED APPROACH: Climbing left turn to 2000 via RIC R-223 to MATOX INT and hold.

ATIS	POTOMAC APP CON	RICHMOND TOWER	GND CON	CLNC DEL
119.15 263.025	126.4 282.375 (001°-185°) 126.75 307.2 (186°-360°)	121.1 257.8	121.9 348.6	127.55 348.6



CATEGORY	A	B	C	D
S-25	600-1 440 (500-1)		600-1½ 440 (500-1½)	600-1½ 440 (500-1½)
CIRCLING	660-1 493 (500-1)		660-1½ 493 (500-1½)	720-2 553 (600-2)

NE-3, 31 JAN 2019 to 28 FEB 2019

NE-3, 31 JAN 2019 to 28 FEB 2019