

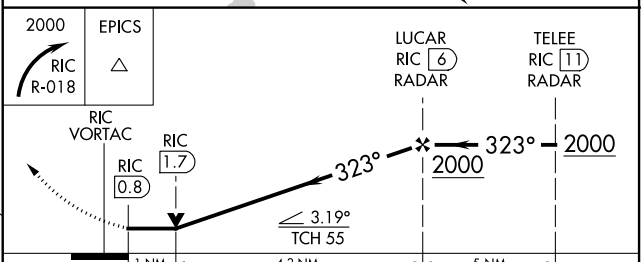
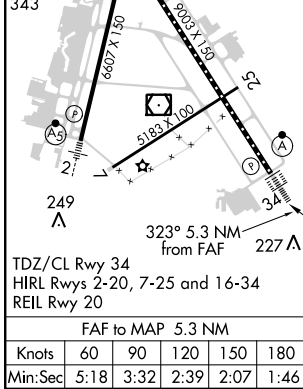
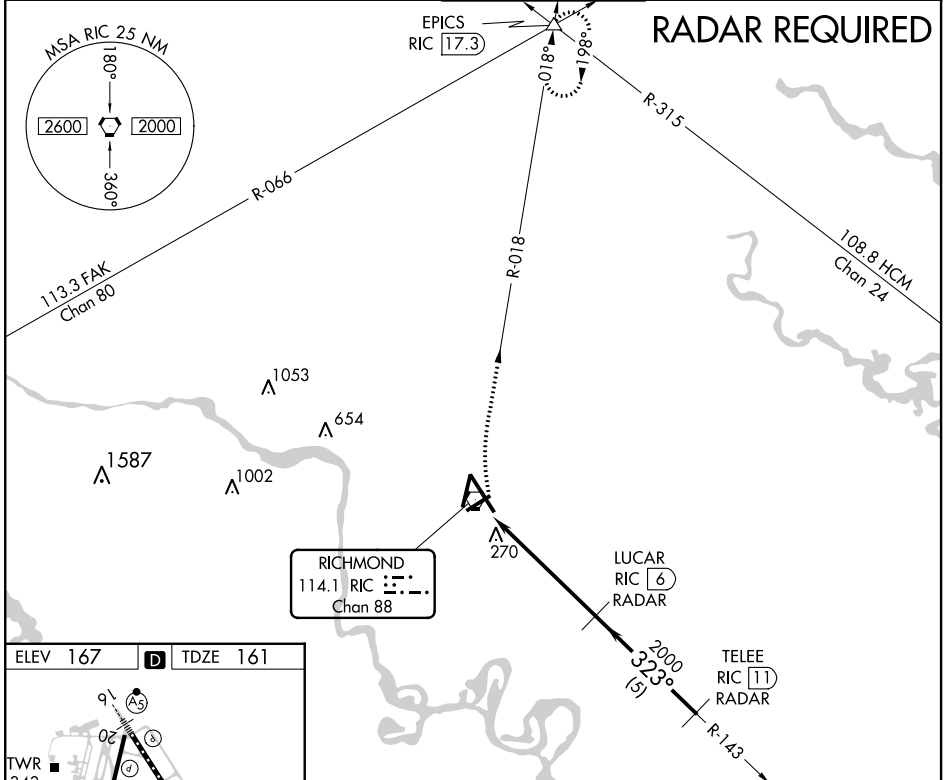
VORTAC RIC <b>114.1</b> Chan <b>88</b>	APP CRS <b>323°</b>	Rwy Idg TDZE <b>161</b> Apt Elev <b>167</b>	<b>9003</b>
--	------------------------	---	-------------

# VOR RWY 34

RICHMOND INTL (RIC)

	For inoperative ALSIF, increase S-34 Cat D visibility to RVR 6000. DME or Radar required.	MISSED APPROACH: Climbing right turn to 2000 via RIC R-018 to EPICS INT and hold.
	ALSIF-2	

ATIS <b>119.15 263.025</b>	POTOMAC APP CON <b>126.4 282.375</b> (001°-185°) <b>126.75 307.2</b> (186°-360°)	RICHMOND TOWER <b>121.1 257.8</b>	GND CON <b>121.9 348.6</b>	CLNC DEL <b>127.55 348.6</b>
-------------------------------	--	--------------------------------------	-------------------------------	---------------------------------



2000	EPICS	LUCAR	TELEEE	
RIC R-018	RIC $\Delta$	RIC <b>6</b> RADAR	RIC <b>11</b> RADAR	
RIC VORTAC	RIC <b>1.7</b>			
	RIC <b>0.8</b>			
CATEGORY	A	B	C	D
S-34	540/24 379 (400-½)			540/50 379 (400-1)
CIRCLING	660-1 493 (500-1)		660-1½ 493 (500-1½)	720-2 553 (600-2)

NE-3, 31 JAN 2019 to 28 FEB 2019

NE-3, 31 JAN 2019 to 28 FEB 2019