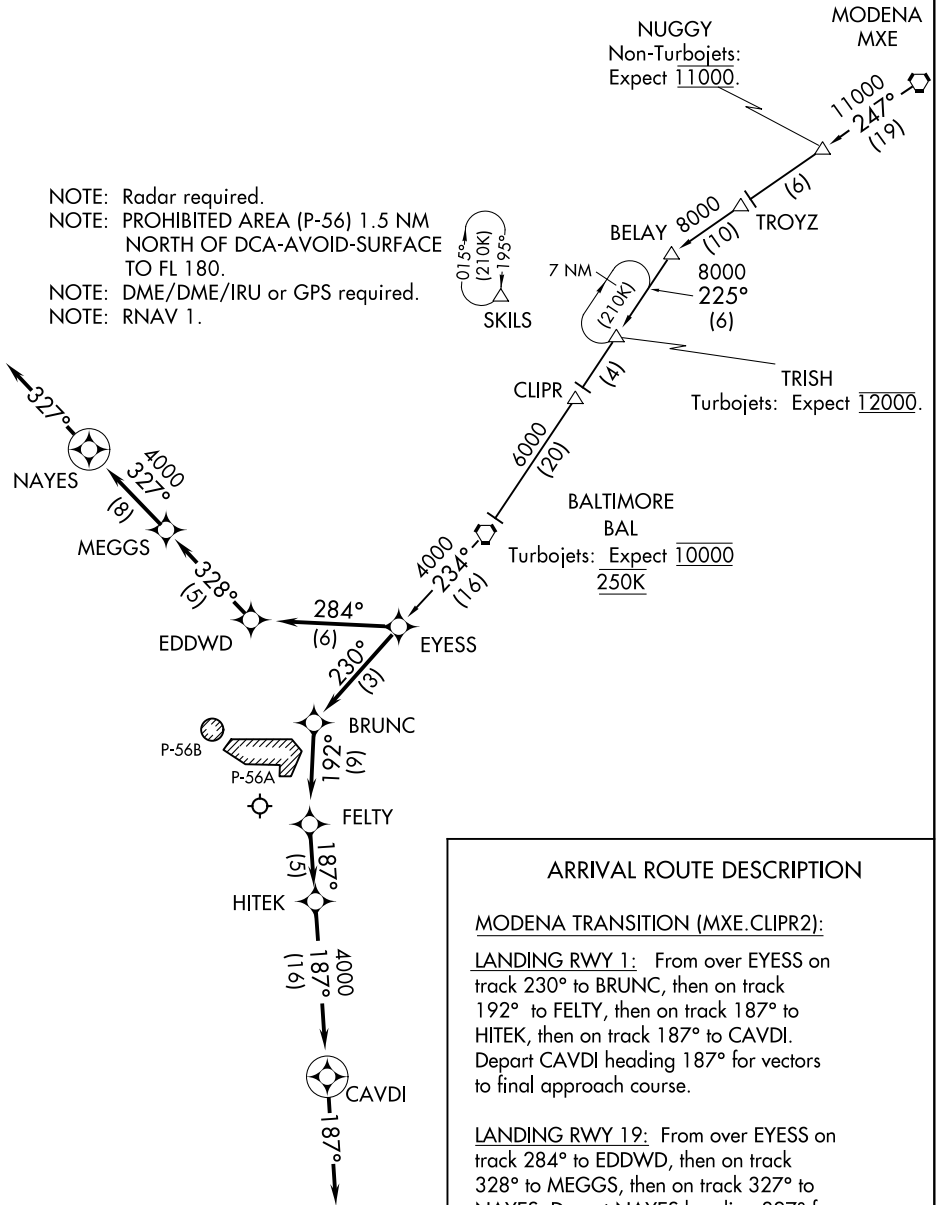


CLIPR TWO ARRIVAL (RNAV)

POTOMAC APP CON
128.7 307.9
WASHINGTON NATIONAL D-ATIS
132.65

- NOTE: Radar required.
- NOTE: PROHIBITED AREA (P-56) 1.5 NM NORTH OF DCA-AVOID-SURFACE TO FL 180.
- NOTE: DME/DME/IRU or GPS required.
- NOTE: RNAV 1.



NE-3, 31 JAN 2019 to 28 FEB 2019

NE-3, 31 JAN 2019 to 28 FEB 2019

ARRIVAL ROUTE DESCRIPTION

MODENA TRANSITION (MXE.CLIPR2):

LANDING RWY 1: From over EYESS on track 230° to BRUNC, then on track 192° to FELTY, then on track 187° to HITEK, then on track 187° to CAVDI. Depart CAVDI heading 187° for vectors to final approach course.

LANDING RWY 19: From over EYESS on track 284° to EDDWD, then on track 328° to MEGGS, then on track 327° to NAYES. Depart NAYES heading 327° for vectors to final approach course.

NOTE: Chart not to scale.