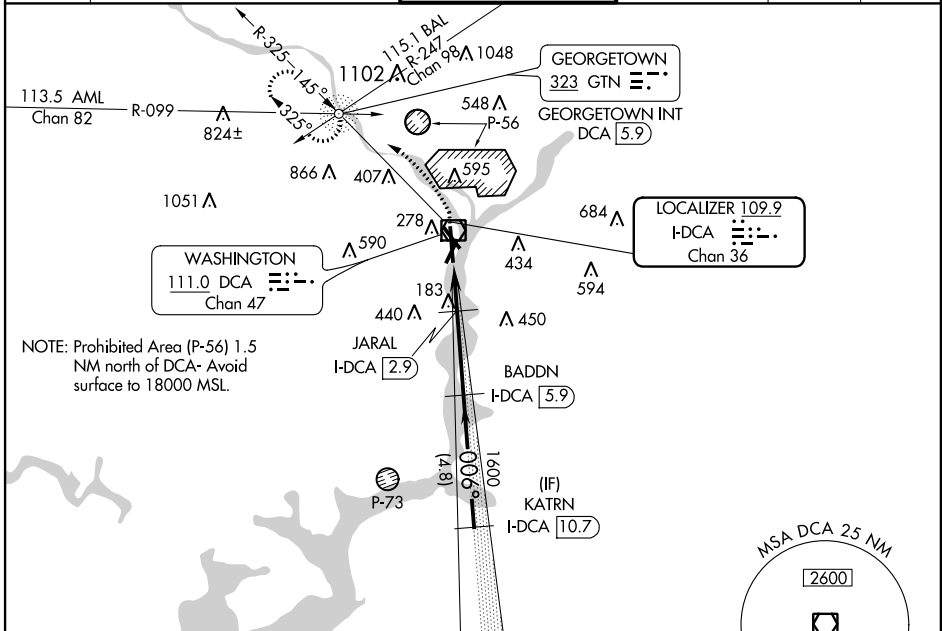


|               |         |          |      |
|---------------|---------|----------|------|
| LOC/DME I-DCA | APP CRS | Rwy Idg  | 6869 |
| 109.9         | 006°    | TDZE     | 14   |
| Chan 36       |         | Apt Elev | 15   |

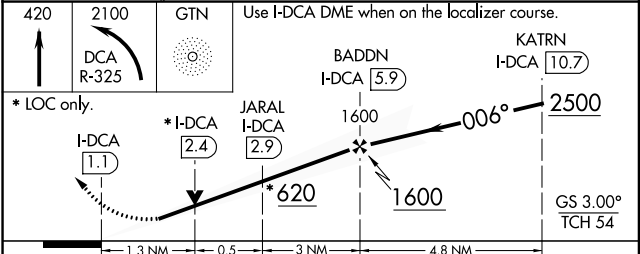
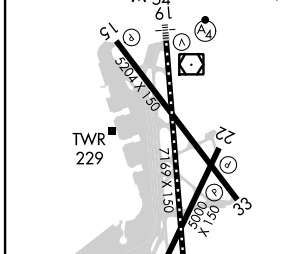
# COPTER ILS or LOC/DME RWY 1

## RONALD REAGAN WASHINGTON NATIONAL (DCA)

|    |  |  |                                 |                        |                    |       |
|----|--|--|---------------------------------|------------------------|--------------------|-------|
| NA | POTOMAC APP CON<br>WASHINGTON TOWER<br>119.85 319.1 (WEST/SOUTH)<br>124.2 269.0 (EAST) |  | WASHINGTON TOWER<br>119.1 257.6 | GND CON<br>121.7 257.6 | CLNC DEL<br>128.25 | CPDLC |
|    | D-ATIS<br>132.65   |  |                                 |                        |                    |       |



|   |          |         |
|---|----------|---------|
| ELEV 15   | <b>D</b> | TDZE 14 |
| REIL Rwys 4, 22, 15 and 33<br>HIRL Rwys 1-19 and 15-33<br>MIRL Rwy 4-22<br>TDZ/CL Rwy 1 |          |         |



|          |               |               |
|----------|---------------|---------------|
| CATEGORY | COPTER        |               |
| H-ILS 1  | 114/12        | 100 (100-1/8) |
| H-LOC 1  | 480/24        | 466 (500-1/2) |
| H-ILS 1  | CAT II RA 106 |               |

### COPTER ILS CATEGORY II - SPECIAL AIRCREW & AIRCRAFT CERTIFICATION REQUIRED

NE-3, 31 JAN 2019 to 28 FEB 2019

NE-3, 31 JAN 2019 to 28 FEB 2019