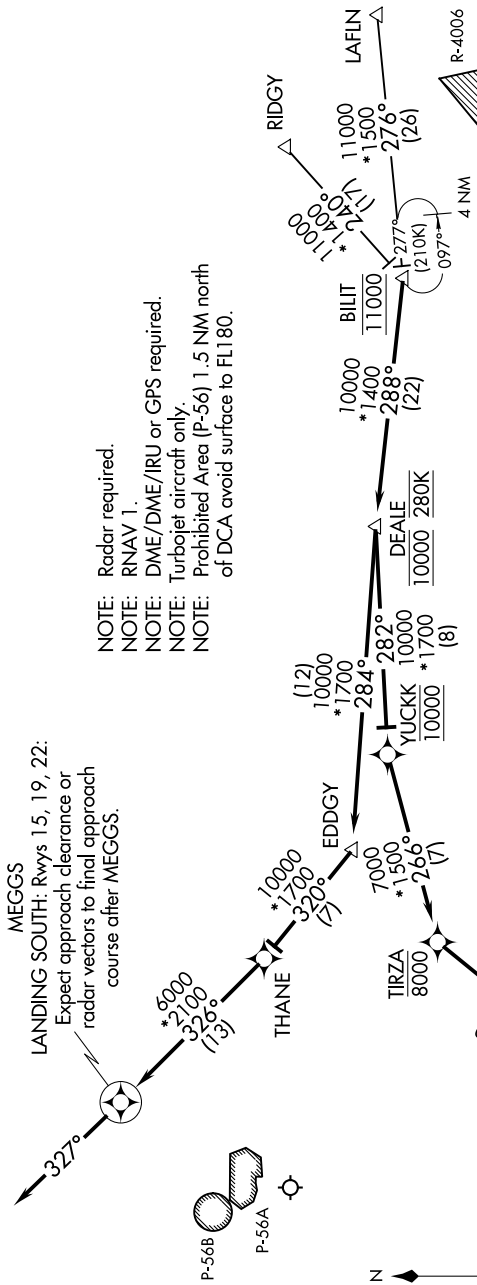


NE-3, 31 JAN 2019 to 28 FEB 2019

POTOMAC_APP CON
124.55 317.425
RONALD REAGAN WASHINGTON NATIONAL D-ATIS
132.65



- NOTE: Radar required.
- NOTE: RNAV 1.
- NOTE: DME/DME/IRU or GPS required.
- NOTE: Turbojet aircraft only.
- NOTE: Prohibited Area (P-56) 1.5 NM north of DCA avoid surface to FL180.

ARRIVAL ROUTE DESCRIPTION

LAFIN TRANSITION (LAFIN.DEALE3):
RIDGY TRANSITION (RIDGY.DEALE3):

From BILIT on track 288° to cross DEALE at 10000 and at 280K.

LANDING NORTH RWYS 1, 4, 33: From DEALE on track 282° to cross YUCKK at 10000, then on track 266° to cross TIRZA at or below 8000, then on track 230° to cross HITEK at 7000, then on track 187° to MITEY, then on heading 187°. Expect radar vectors to final approach course.
LANDING SOUTH RWYS 15, 19, 22: From DEALE on track 284° to EDDGY, then on track 320° to THANE, then on track 326° to MEGGS, then on heading 327°. Expect radar vectors to final approach course.

MITEY
LANDING NORTH:
Rwys 1, 4, 33:
Expect approach clearance or radar vectors to final approach course after MITEY.

NOTE: Chart not to scale.

NE-3, 31 JAN 2019 to 28 FEB 2019