

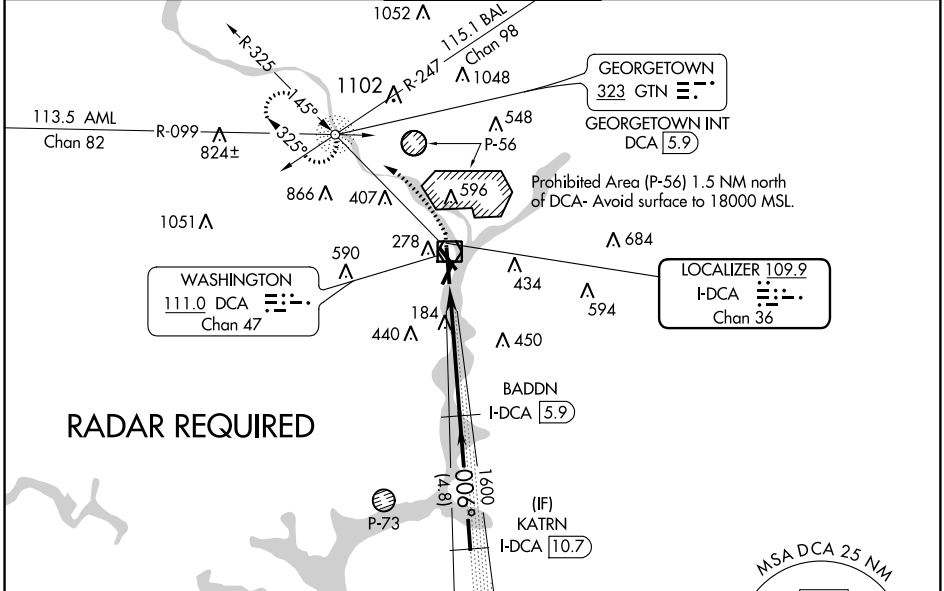
LOC/DME I-DCA 109.9 Chan 36	APP CRS 006°	Rwy Idg 6869 TDZE 14 Apt Elev 14
-------------------------------------------------	------------------------	-------------------------------------------------------------

ILS RWY 1 (SA CAT I)

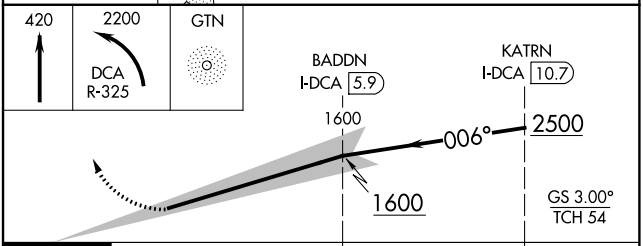
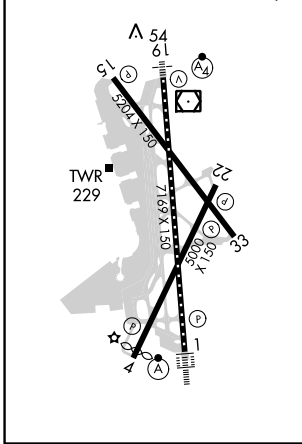
RONALD REAGAN WASHINGTON NATIONAL (DCA)

DME required. Requires specific OPSPEC, MSPEC or LOA approval and use of HUD to DH.	ALSF-2 	MISSED APPROACH: Climb to 420 then climbing left turn to 2200 on DCA VOR/DME R-325 to GTN NDB/INT/DCA 5.9 DME and hold.

D-ATIS 132.65	POTOMAC APP CON 119.85 319.1 (WEST/SOUTH) 124.2 269.0 (EAST)	WASHINGTON TOWER 119.1 257.6	GND CON 121.7 257.6	CLNC DEL 128.25	CPDLC
-------------------------	----------------------------------------------------------------------------------	----------------------------------------	-------------------------------	---------------------------	-------



ELEV 14	D	TDZE 14
REIL Rwys 4, 22, 15 and 33 HIRL Rwys 1-19 and 15-33 MIRL Rwy 4-22 TDZ/CL Rwy 1		



1007'	4.8 NM	4.8 NM	
CATEGORY	A	B	C
S-ILS 1		RA 156/14	150 DA 164

SA CATEGORY I ILS- SPECIAL AIRCREW & AIRCRAFT CERTIFICATION REQUIRED

NE-3, 31 JAN 2019 to 28 FEB 2019

NE-3, 31 JAN 2019 to 28 FEB 2019