

| | | | |
|----------------|---------|----------|------|
| LOC/DME I-VVWH | APP CRS | Rwy Idg | 6869 |
| 108.5 | 147° | TDZE | 13 |
| Chan 22 | | Apt Elev | 14 |

LDA Z RWY 19

RONALD REAGAN WASHINGTON NATIONAL (DCA)

⚠ Inop table does not apply. Circling NA northeast of Rwy 15-33. Rwy 19 helicopter visibility reduction below 1 SM NA. DME required.

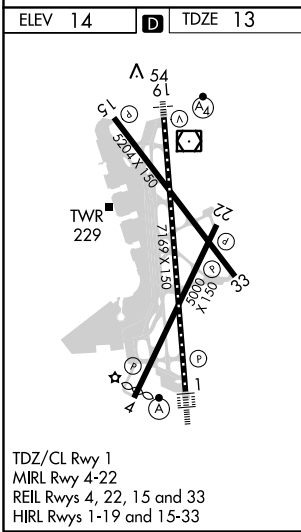
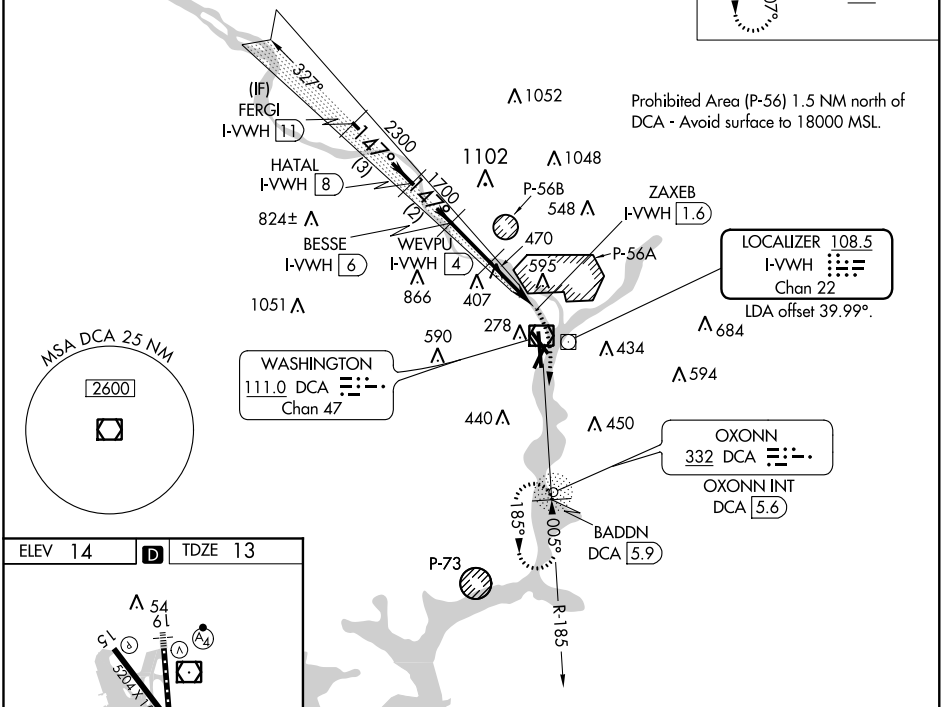
MALSF
MISSED APPROACH: Climbing right turn to 3000 on DCA VOR/DME R-185 to BADDN/DCA VOR/DME 5.9 DME and hold, continue climb-in-hold to 3000.

| | | | | | |
|--------|---------------------|------------------|-------------|----------|-------|
| D-ATIS | POTOMAC APP CON | WASHINGTON TOWER | GND CON | CLNC DEL | CPDLC |
| 132.65 | (WEST/SOUTH) (EAST) | 119.1 257.6 | 121.7 257.6 | 128.25 | |
| | 119.85 319.1 269.0 | | | | |

ALTERNATE MISSED APCH FIX

OXONN DCA 332

RADAR REQUIRED



| | | | | | | | |
|-------------------|-----------------------------------|----------------|----------------|----------------|------------------|------|---------------|
| | FERG1 I-VVWH 11 | HATAL I-VVWH 8 | BESSE I-VVWH 6 | WEVPU I-VVWH 4 | ZAXEB I-VVWH 1.6 | 3000 | BADDN DCA 5.9 |
| | 3000 → 2300 → 1700 → 1100 | | | | | | |
| | 3 NM → 2 NM → 2 NM → 2.4 NM → 0.8 | | | | | | |
| CATEGORY | A | | B | | C | | D |
| S-19 | 720/55 | | 707 (800-1) | | 720-2 | | 707 (800-2) |
| C CIRCLING | 720-1 | | 706 (800-1) | | 840-1½ | | 900-3 |
| | | | | | 826 (900-1½) | | 886 (900-3) |

NE-3, 31 JAN 2019 to 28 FEB 2019

NE-3, 31 JAN 2019 to 28 FEB 2019