

NUMMY TWO ARRIVAL

WASHINGTON, DC

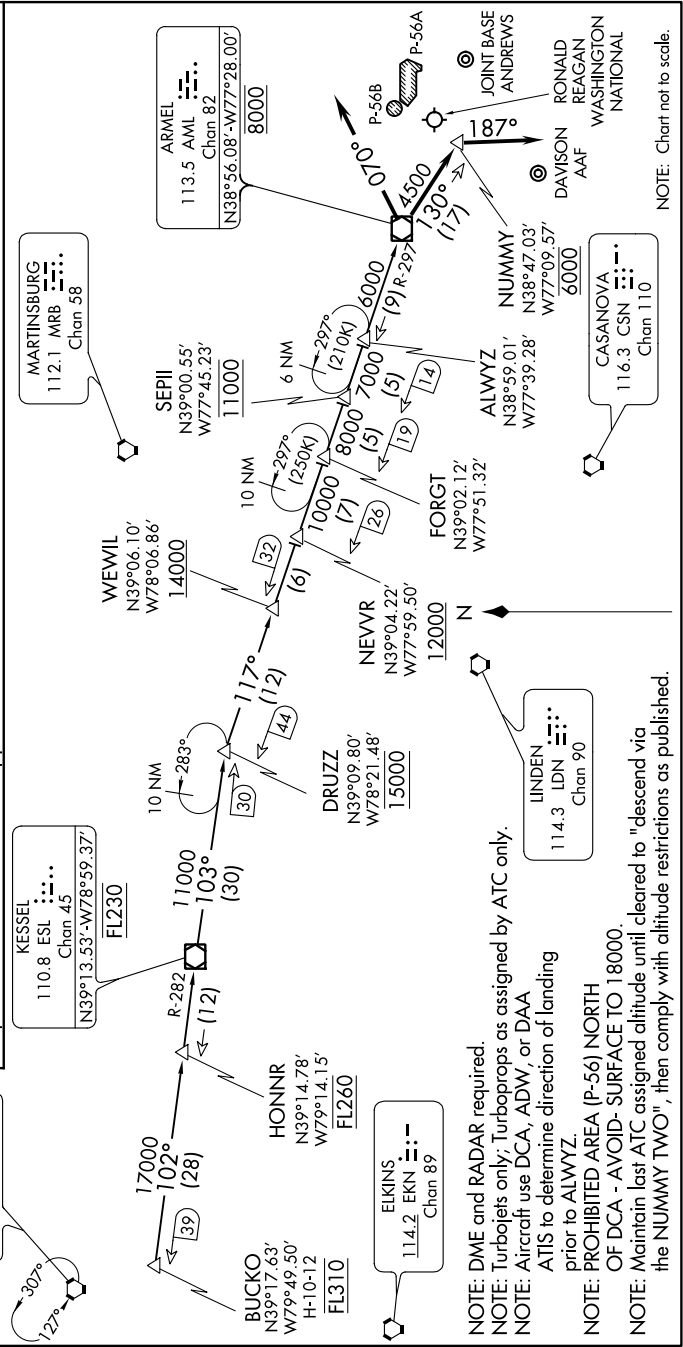
NE-3, 31 JAN 2019 to 28 FEB 2019

ARRIVAL ROUTE DESCRIPTION

BUCKO TRANSITION (BUCKO.NUMMY2): From over BUCKO on ESL R-282 to ESL VOR/DME, then on ESL R-103 to DRUZZ, then on AML R-297 to AML VOR/DME.

Landing DCA Rwy 1, 4, 33, ADW Rwy 1L, 1R, and DAA: From over AML VOR/DME on AML R-130 to cross NUMMY/AML 17 DME at 6000, then on heading 187°, expect radar vectors to final approach course.

Landing DCA Rwy 15, 19, 22 and ADW Rwy 19L, 19R: Depart AML VOR/DME on heading 070°, expect radar vectors to final approach course.



NOTE: Chart not to scale.

NUMMY TWO ARRIVAL

WASHINGTON, DC

NE-3, 31 JAN 2019 to 28 FEB 2019