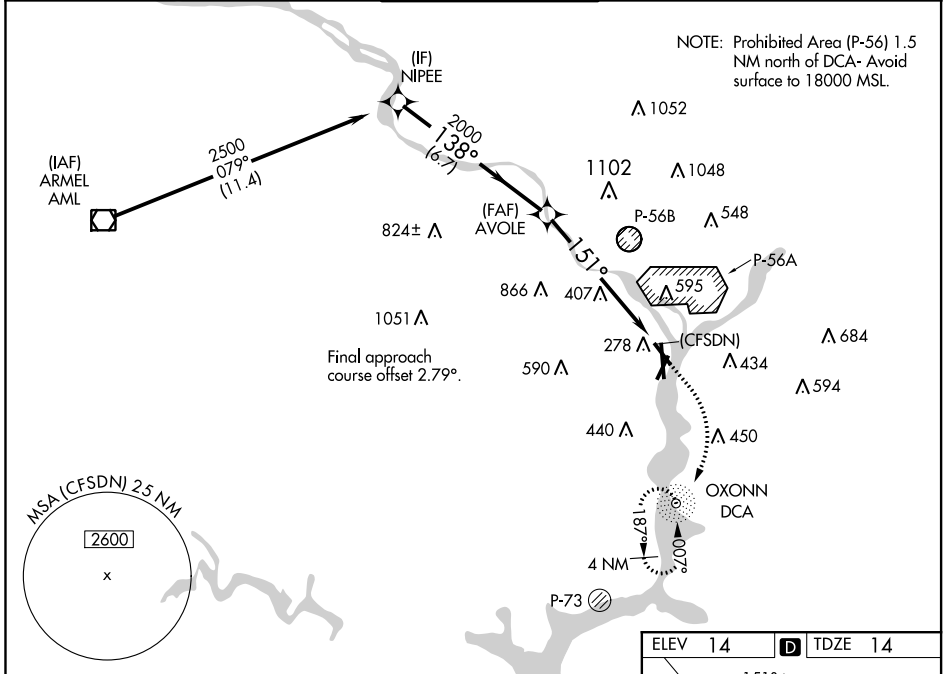


WAAS CH 70737 W15A	APP CRS 151°	Rwy Idg 5204 TDZE 14 Apt Elev 14
--	------------------------	---

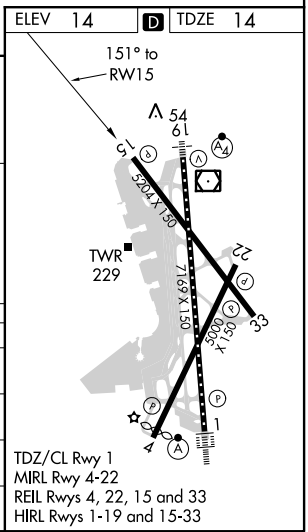
RNAV (GPS) RWY 15

RONALD REAGAN WASHINGTON NATIONAL (DCA)

RNP APCH.		MISSED APPROACH: (Do not exceed 210 KIAS until reaching 600 MSL) Climb to 600 then climbing right turn to 1800 direct DCA NDB and hold.		
<p>▼ For uncompensated Baro-VNAV systems, LNAV/VNAV NA below -9°C (16°F) or above 54°C (130°F). Circling NA northeast of Rwy 15-33. ▲ Rwy 15 helicopter visibility reduction below ¾ SM NA.</p>				
D-ATIS 132.65	POTOMAC APP CON 119.85 319.1 124.2 269.0	(WEST/SOUTH) (EAST)	WASHINGTON TOWER 119.1 257.6	GND CON 121.7 257.6
			CLNC DEL 128.25	CPDLC



VGSI and RNAV glidepath not coincident (VGSI Angle 3.00/TCH 36).				
NIPEE		AVOLE		DCA
2500		2000		600
138°		151°		1800
GP 3.00°		2000		DCA
TCH 55				
6.7 NM		6.1 NM		2.3 NM
				(CFSDN)
				* LNAV only.
				* 2.3 NM to (CFSDN)
CATEGORY	A	B	C	D
LPV DA	394-1¼ 380 (400-1¼)			
LNAV/VNAV DA	745-2½ 731 (800-2½)			
LNAV MDA	800-1 786 (800-1)	800-1¼ 786 (800-1¼)	800-2½	786 (800-2½)
C CIRCLING	800-1 786 (800-1)	800-1¼ 786 (800-1¼)	840-2½ 826 (900-2½)	900-3 886 (900-3)



NE-3, 31 JAN 2019 to 28 FEB 2019

NE-3, 31 JAN 2019 to 28 FEB 2019