

WAAS CH 90123 W33A	APP CRS 334°	Rwy Idg 5204 TDZE 13 Apt Elev 14
--	------------------------	---

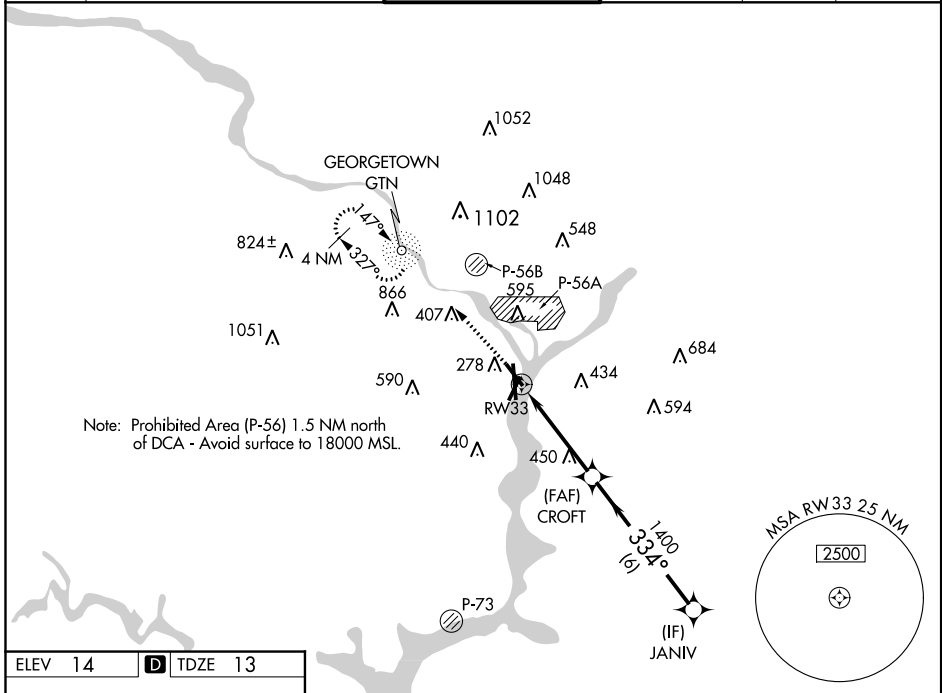
RNAV (GPS) RWY 33

RONALD REAGAN WASHINGTON NATIONAL (DCA)

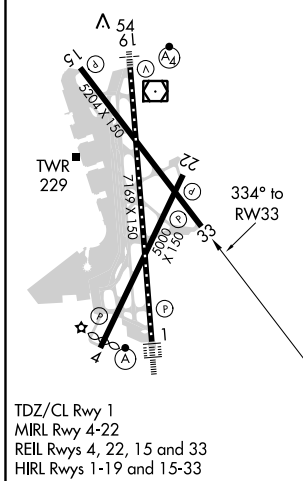
⚠ For uncompensated Baro-VNAV systems, LNAV/VNAV NA below -9°C (16°F) or above 54°C (130°F).
⚠ Circling NA northeast of Rwy 15-33. DME/DME RNP-0.3 NA.

MISSED APPROACH: Climb to 2200 direct GTN NDB and hold, continue climb-in-hold to 2200.

D-ATIS 132.65	POTOMAC APP CON 119.85 319.1 (WEST/SOUTH) 124.2 269.0 (EAST)	WASHINGTON TOWER 119.1 257.6	GND CON 121.7 257.6	CLNC DEL 128.25	CPDLC
-------------------------	--	--	-------------------------------	---------------------------	-------



ELEV 14	D	TDZE 13
---------	----------	---------



2200	↑	GTN	VGSi and RNAV glidepath not coincident (VGSi Angle 3.00/TCH 37).			
*LNAV only		*2.1 NM to RW33		JANIV		
RW33		CROFT	1400		2100	
2.1 NM		2.1 NM		6 NM		
GP 3.00°	TCH 55					
CATEGORY	A	B	C	D		
LPV DA	263-¾		250 (300-¾)			
LNAV/VNAV DA	609-2		596 (600-2)			
LNAV MDA	720-1	707 (800-1)	720-2	707 (800-2)		
C CIRCLING	720-1	706 (800-1)	840-2½	900-3 826 (900-2½) 886 (900-3)		

NE-3, 31 JAN 2019 to 28 FEB 2019

NE-3, 31 JAN 2019 to 28 FEB 2019