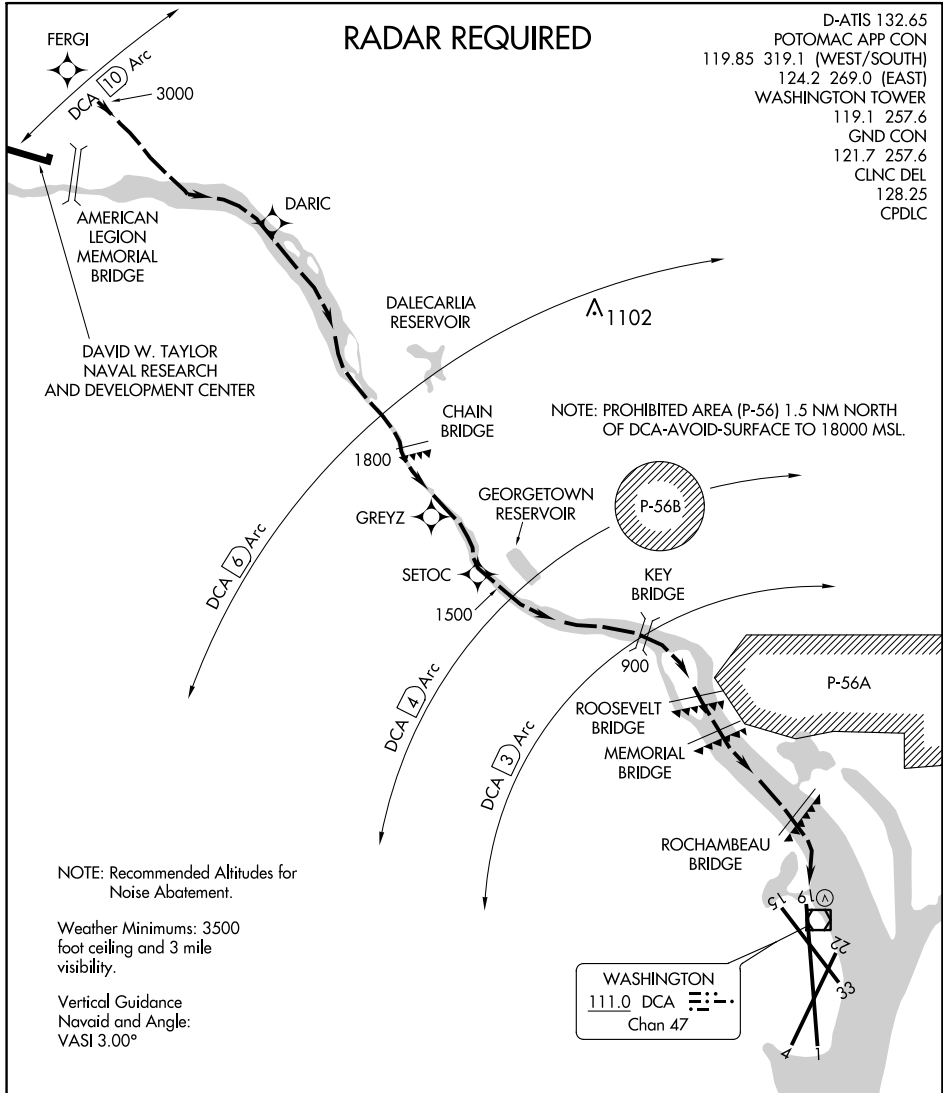


RIVER VISUAL RWY 19

RADAR REQUIRED

D-ATIS 132.65
 POTOMAC APP CON
 119.85 319.1 (WEST/SOUTH)
 124.2 269.0 (EAST)
 WASHINGTON TOWER
 119.1 257.6
 GND CON
 121.7 257.6
 CLNC DEL
 128.25
 CPDLC



NE-3, 31 JAN 2019 to 28 FEB 2019

NE-3, 31 JAN 2019 to 28 FEB 2019

NOTE: Recommended Altitudes for Noise Abatement.

Weather Minimums: 3500 foot ceiling and 3 mile visibility.

Vertical Guidance
Navaid and Angle:
VASI 3.00°

1 NM	2	3	4	5	6	7	8
------	---	---	---	---	---	---	---

RIVER VISUAL RWY 19

Aircraft may visually follow the river to the airport, or may proceed via the RNAV (RNP) RWY 19 Approach to SETOC waypoint, then follow the river to the airport.

NOTE: Clearance for visual approach does not authorize penetration of P-56.

RIVER VISUAL RWY 19