

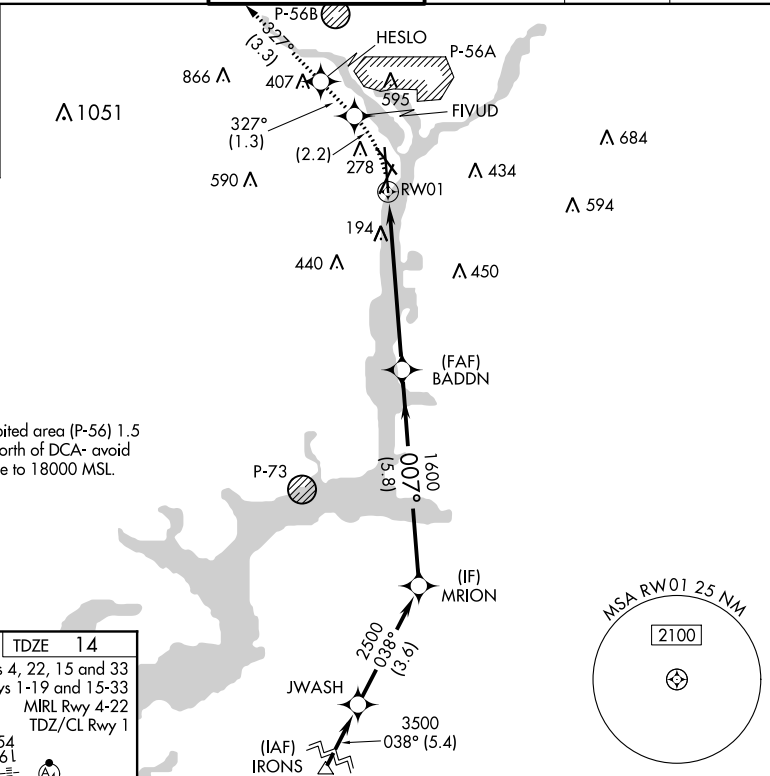
APP CRS	Rwy Idg	<b>6869</b>
<b>007°</b>	TDZE	<b>14</b>
	Apt Elev	<b>14</b>

# RNAV (RNP) RWY 1

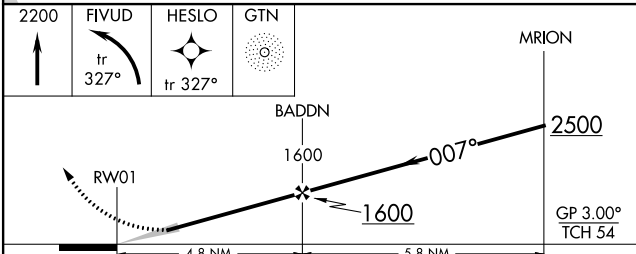
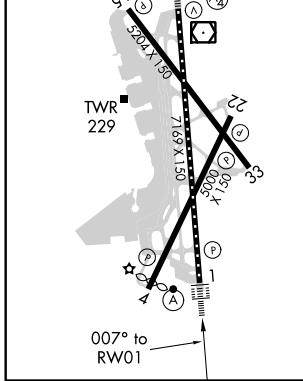
RONALD REAGAN WASHINGTON NATIONAL (DCA)

For uncompensated Baro-VNAV systems, procedure NA below -10°C (14°F) or above 48°C (120°F). RF required. GPS required. Missed approach requires RNP less than 1.0. For inop ALS, increase RNP 0.30 all Cats visibility to 1¼ mile.	ALSF-2 	MISSED APPROACH: (Do not exceed 185K until FIVUD) Climb to 2200 left turn to FIVUD and on track 327° to HESLO and on track 327° to GTN NDB and hold.

D-ATIS	POTOMAC APP CON	WASHINGTON TOWER	GND CON	CLNC DEL	CPDLC
<b>132.65</b>	<b>119.85 319.1</b> (WEST/SOUTH) <b>124.2 269.0</b> (EAST)	<b>119.1 257.6</b>	<b>121.7 257.6</b>	<b>128.25</b>	



ELEV 14	<b>D</b>	TDZE 14
REIL Rwy 4, 22, 15 and 33 HIRL Rwy 1-19 and 15-33 MRL Rwy 4-22 TDZ/CL Rwy 1		



CATEGORY	A	B	C	D
RNP 0.30 DA	552/60		538 (600-1¼)	

**AUTHORIZATION REQUIRED**

NE-3, 31 JAN 2019 to 28 FEB 2019

NE-3, 31 JAN 2019 to 28 FEB 2019