

TRUPS FOUR ARRIVAL (RNAV) Arrival Routes

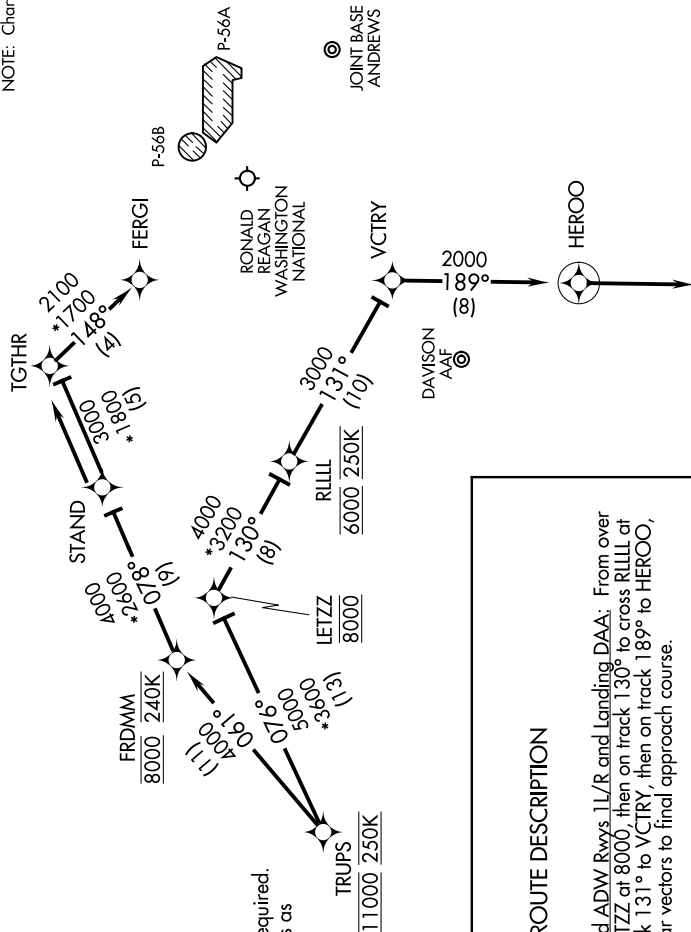
WASHINGTON, DC

NE-3, 31 JAN 2019 to 28 FEB 2019

POTOMAC APP CON
118.675 323.175
RONALD REAGAN WASHINGTON
NATIONAL D-ATIS
132.65
JOINT BASE ANDREWS D-ATIS
133.675 251.05
DAVISON AAF ATIS
128.175

NOTE: Radar required.
NOTE: RNAV 1.
NOTE: DME/DME/IRU or GPS required.
NOTE: Turboprops only; turboprops as
assigned by ATC only.

NOTE: Chart not to scale.



N

ARRIVAL ROUTE DESCRIPTION

Landing DCA Rwy 1, 4, 33, and ADW Rwys 1L/R and Landing DAA: From over TRUPS on track 076° to cross LETZZ at 8000, then on track 130° to cross RLLL at 6000 and at 250K, then on track 131° to VCTRY, then on track 189° to HEROO, then on track 189°. Expect radar vectors to final approach course.

Landing DCA Rwy 15, 19, 22: From over TRUPS on track 061° to cross FRDMM at 8000 and 240K, then on track 078° to STAND, then on track 078° to TGTTHR, then on track 148° to FERGI. Expect LDA/DME Rwy 19, RNAV/RNP Rwy 19, RIVER VISUAL Rwy 19 or radar vectors to final approach course.

Landing ADW Rwy 19L/R: From over TRUPS on track 061° to cross FRDMM at 8000 and at 240K, then on track 078° to STAND, then on track 078°. Expect radar vectors to final approach course.

NOTE: Prohibited area (P-56) north of DCA-avoid-surface to FL180.

NOTE: Maintain last assigned altitude until cleared to "descend via" the TRUPS4. ARTCC will issue landing assignment (north or south) and Potomac TRACON will issue runway assignments.