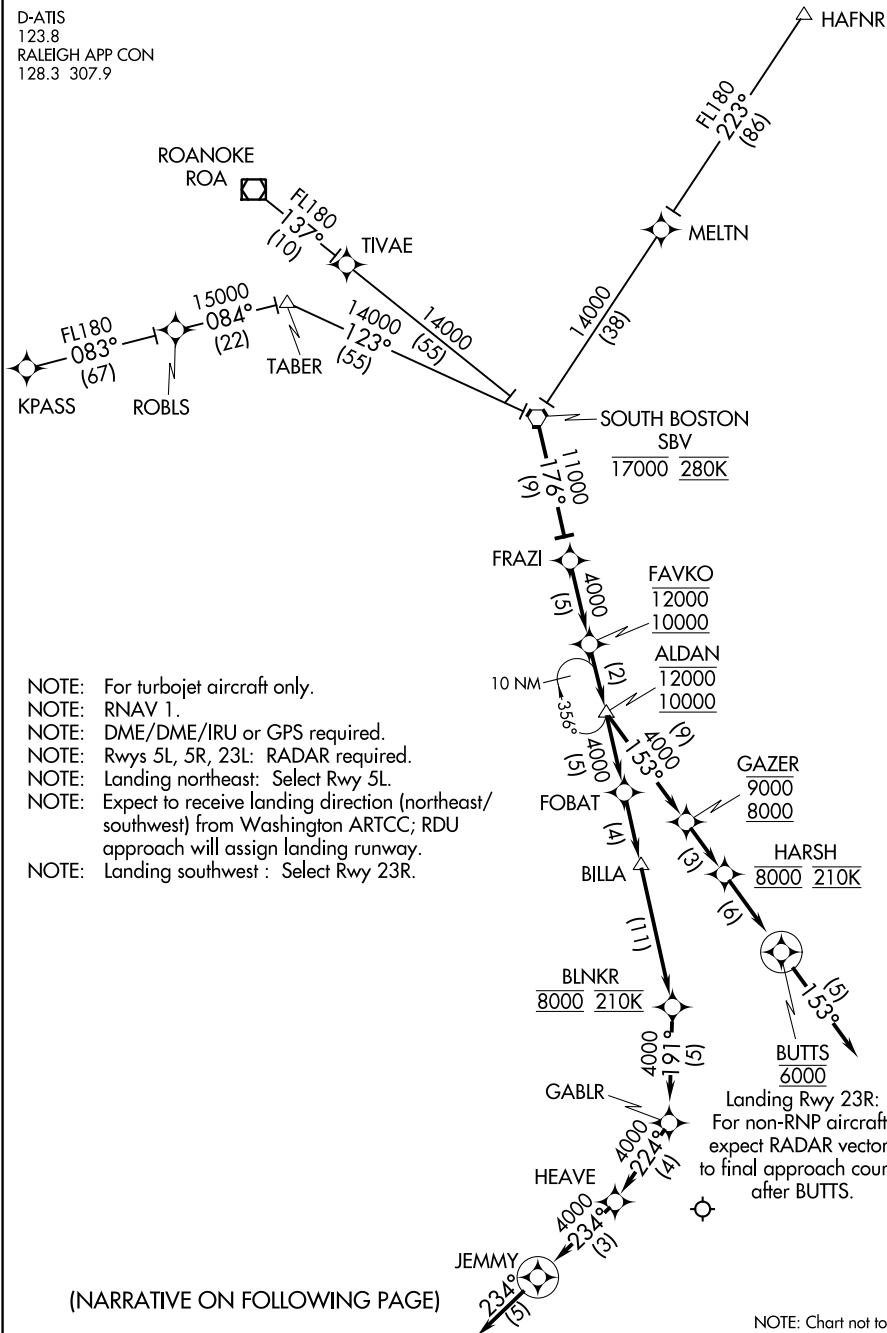


ALDAN TWO ARRIVAL (RNAV)

D-ATIS
123.8
RALEIGH APP CON
128.3 307.9



- NOTE: For turbojet aircraft only.
- NOTE: RNAV 1.
- NOTE: DME/DME/IRU or GPS required.
- NOTE: Rwys 5L, 5R, 23L: RADAR required.
- NOTE: Landing northeast: Select Rwy 5L.
- NOTE: Expect to receive landing direction (northeast/southwest) from Washington ARTCC; RDU approach will assign landing runway.
- NOTE: Landing southwest: Select Rwy 23R.

(NARRATIVE ON FOLLOWING PAGE)

NOTE: Chart not to scale.

SE-2, 31 JAN 2019 to 28 FEB 2019

SE-2, 31 JAN 2019 to 28 FEB 2019

ALDAN TWO ARRIVAL (RNAV)