

# BLUE DEVIL FIVE DEPARTURE

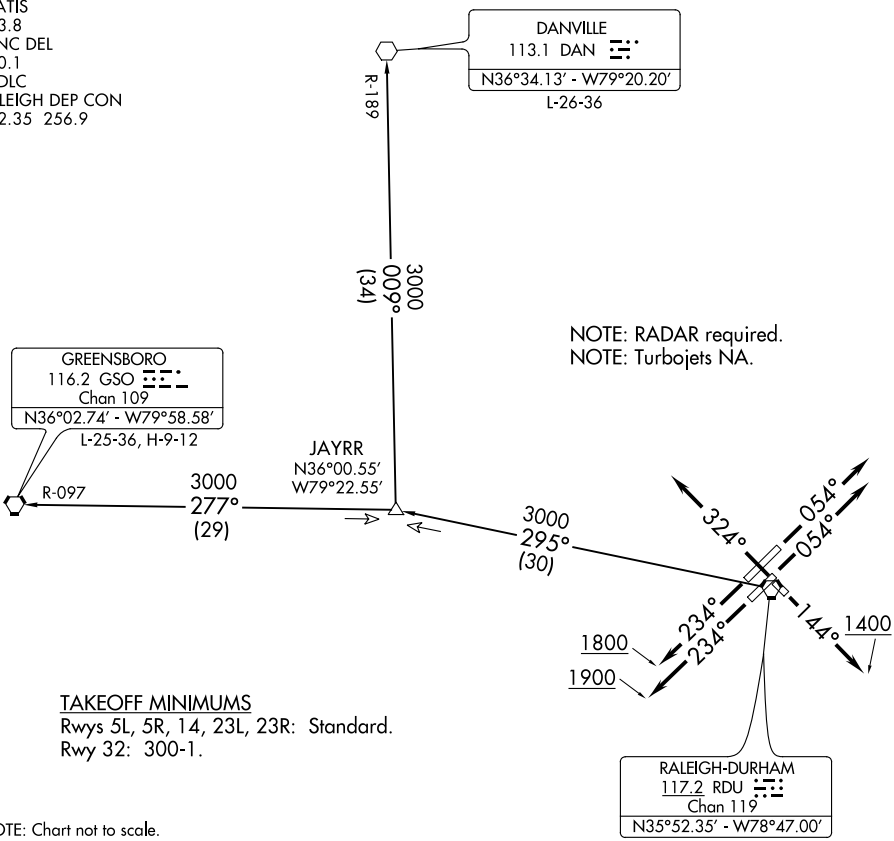
D-ATIS  
123.8  
CLNC DEL  
120.1  
CPDLC  
RALEIGH DEP CON  
132.35 256.9

DANVILLE  
113.1 DAN  
N36°34.13' - W79°20.20'  
L-26-36

GREENSBORO  
116.2 GSO  
Chan 109  
N36°02.74' - W79°58.58'  
L-25-36, H-9-12

JAYRR  
N36°00.55'  
W79°22.55'

NOTE: RADAR required.  
NOTE: Turbojets NA.



**TAKEOFF MINIMUMS**  
Rwys 5L, 5R, 14, 23L, 23R: Standard.  
Rwy 32: 300-1.

NOTE: Chart not to scale.

SE-2, 31 JAN 2019 to 28 FEB 2019

SE-2, 31 JAN 2019 to 28 FEB 2019



## DEPARTURE ROUTE DESCRIPTION

- TAKEOFF RWY 5L/R: Climb heading 054°, thence. . .
- TAKEOFF RWY 14: Climb heading 144° to 1400, thence. . .
- TAKEOFF RWY 23L: Climb heading 234° to 1900, thence. . .
- TAKEOFF RWY 23R: Climb heading 234° to 1800, thence. . .
- TAKEOFF RWY 32: Climb heading 324°, thence. . .

. . . or as assigned for vectors to assigned transition. Expect clearance to filed altitude/flight level ten minutes after departure.

DANVILLE TRANSITION (BLUE5.DAN): From over RDU VORTAC via RDU R-295 to JAYRR INT then via DAN R-189 to DAN VOR.

GREENSBORO TRANSITION (BLUE5.GSO): From over RDU VORTAC via RDU R-295 to JAYRR INT then via GSO R-097 to GSO VORTAC.