

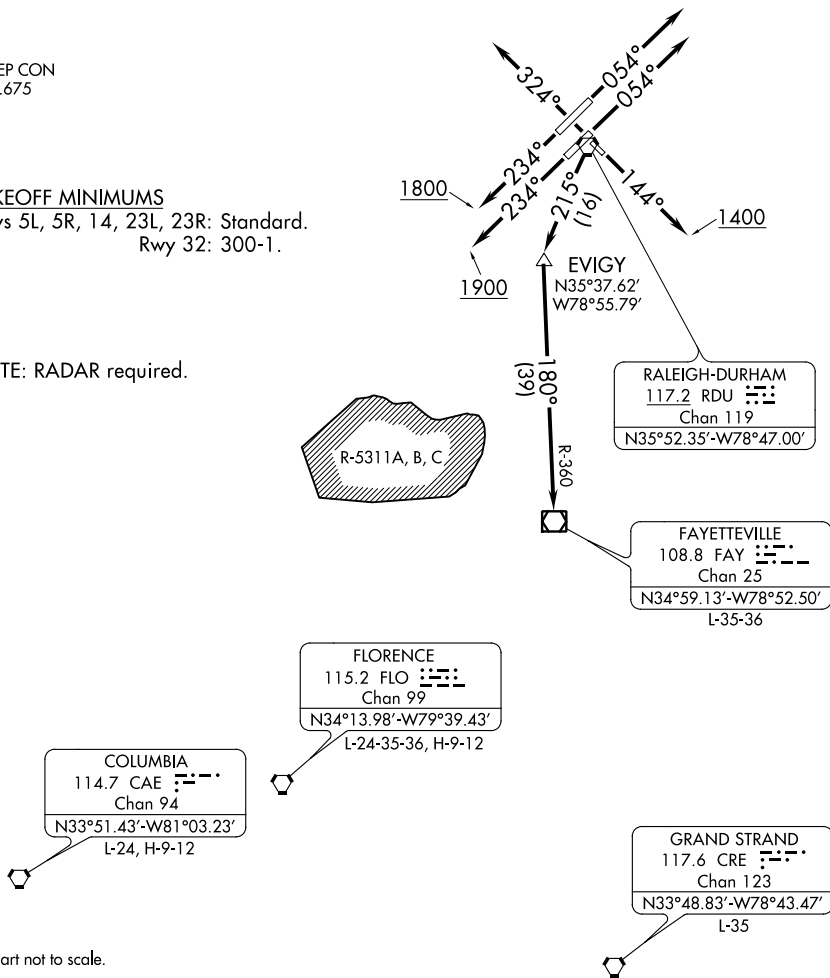
# FAYETTEVILLE FOUR DEPARTURE

D-ATIS  
123.8  
CLNC DEL  
120.1  
CPDLC  
RALEIGH DEP CON  
125.3 353.675

### TAKEOFF MINIMUMS

Rwys 5L, 5R, 14, 23L, 23R: Standard.  
Rwy 32: 300-1.

NOTE: RADAR required.



SE-2, 31 JAN 2019 to 28 FEB 2019

SE-2, 31 JAN 2019 to 28 FEB 2019

### DEPARTURE ROUTE DESCRIPTION

- TAKEOFF RWY 5L/R:** Climb heading 054°, thence. . .
- TAKEOFF RWY 14:** Climb heading 144° to 1400, thence. . .
- TAKEOFF RWY 23L:** Climb heading 234° to 1900, thence. . .
- TAKEOFF RWY 23R:** Climb heading 234° to 1800, thence. . .
- TAKEOFF RWY 32:** Climb heading 324°, thence. . .

. . . or as assigned for vectors to join RDU R-215 thence via RDU R-215 and FAY R-360 to FAY VOR/DME then via assigned route. Expect clearance to filed altitude/flight level ten minutes after departure.