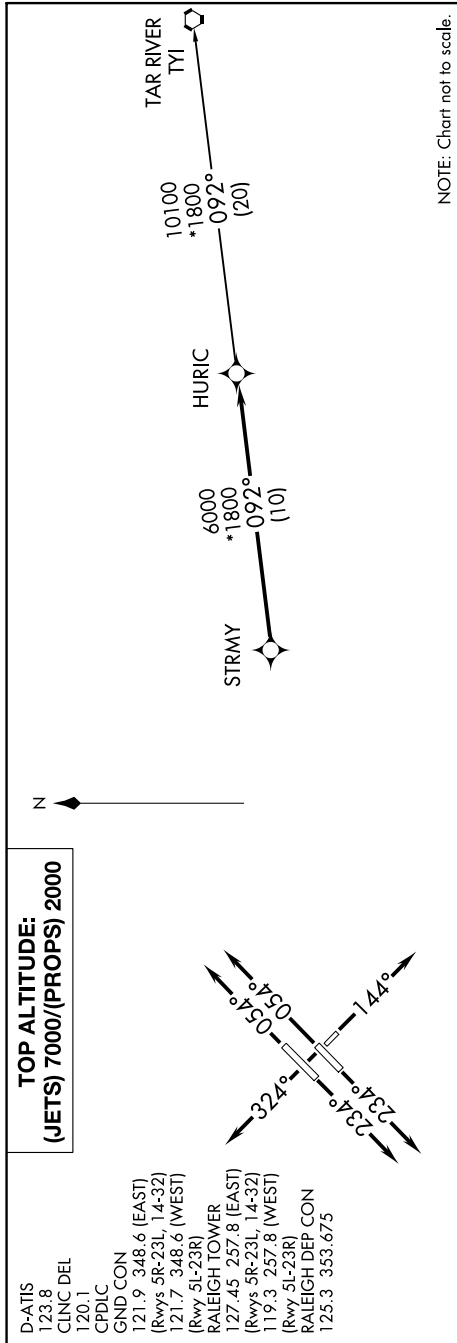


HURIC THREE DEPARTURE (RNAV)

SE-2, 31 JAN 2019 to 28 FEB 2019



NOTE: Chart not to scale.

DEPARTURE ROUTE DESCRIPTION

TAKEOFF RWYS 5L/5R: Climb heading 054° or as assigned by ATC, expect RADAR vectors to STRMY, thence. . . .

TAKEOFF Rwy 14: Climb heading 144° or as assigned by ATC, expect RADAR vectors to STRMY, thence. . . .

TAKEOFF RWYS 23L/23R: Climb heading 234° or as assigned by ATC, expect RADAR vectors to STRMY, thence. . . .

TAKEOFF Rwy 32: Climb heading 324° or as assigned by ATC, expect RADAR vectors to STRMY, thence. . . .

. . . on track 092° to HURIC, turbojets maintain 7000, propellers maintain 2000. Expect clearance to filed altitude within ten minutes after departure.

TAR RIVER TRANSITION (HURIC3.TYI)

TAKEOFF MINIMUMS

Rwys 5L, 5R, 14, 23R: Standard with minimum climb of 500' per NM to 940.

Rwy 23L: Standard with minimum climb of 500' per NM to 1100.

Rwy 32: 300-1 with minimum climb of 500' per NM to 940.

NOTE: Transponder code will be assigned via PDC or Raleigh clearance delivery.

NOTE: If unable to accept climb rate, advise ATC on initial contact.

NOTE: RNAV 1.

NOTE: DME/DME/IRU or GPS required.

NOTE: RADAR required.

SE-2, 31 JAN 2019 to 28 FEB 2019