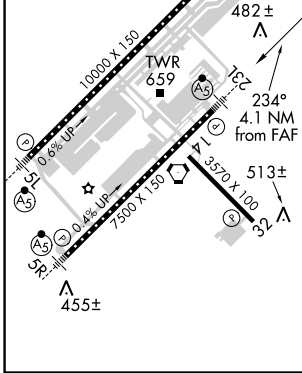
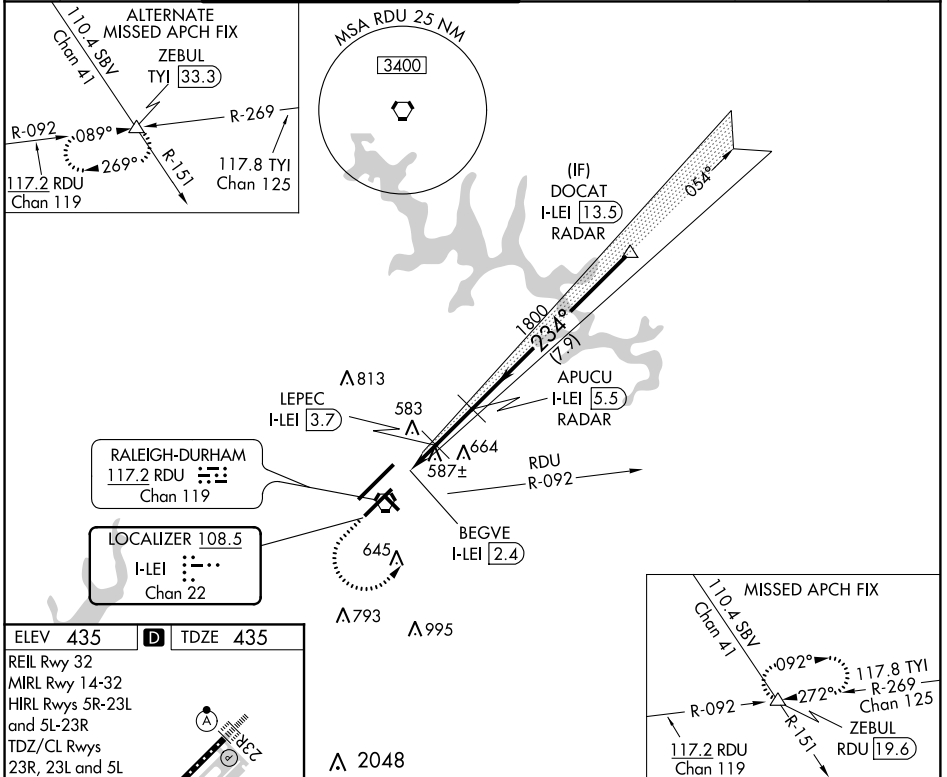


LOC/DME I-LEI 108.5 Chan 22	APP CRS 234°	Rwy Idg 7500 TDZE 435 Apt Elev 435
---	------------------------	---

ILS or LOC RWY 23L

RALEIGH-DURHAM INTL (RDU)

RADAR required for procedure entry. DME required for LOC only.		MALSR 	MISSED APPROACH: Climb to 1100 then climbing left turn to 2600 on heading 050° and RDU VORTAC R-092 to ZEBUL INT and hold.				
Simultaneous approach authorized. For inop ALS, increase S-ILS 23L all Cats visibility to RVR 5500. For inop ALS, increase S-LOC-23L Cat C/D visibility to 2½ SM. Localizer unusable for coupled approaches below 1100 or within 2 NM of threshold.							
D-ATIS 123.8	RALEIGH APP CON 128.3 307.9	(EAST) RALEIGH TOWER (WEST) 127.45 257.8 Rwys 5R-23L and 14-32	(EAST) GND CON (WEST) 119.3 257.8 Rwy 5L-23R	(EAST) 121.9 348.6 Rwys 5R-23L and 14-32	(WEST) 121.7 348.6 Rwy 5L-23R	CLNC DEL 120.1	CPDLC



ELEV 435	D	TDZE 435		
REIL Rwy 32	MIRL Rwy 14-32	HIRL Rwys 5R-23L and 5L-23R		
TDZ/CL Rwys 23R, 23L and 5L				
1100	2600	ZEBUL		
↑	hdg 050°	△		
*LOC only.		APUCU I-LEI 5.5 RADAR		
BEGVE I-LEI 2.4		Localizer unusable from 1 NM from threshold.		
LEPEC I-LEI 3.7		DOCAT I-LEI 13.5 RADAR		
1800				
*1200				
1800				
4000				
1 NM		GS 3.00°		
1.3 NM		TCH 56		
1.8 NM				
7.9 NM				
CATEGORY	A	B	C	D
S-ILS 23L	806/35 371 (400-¾)			
S-LOC 23L	840/40 405 (500-¾)			
C CIRCLING	960-1¼	525 (600-1¼)	1040-1¾ 605 (700-1¾)	1180-2½ 745 (800-2½)

SE-2, 31 JAN 2019 to 28 FEB 2019

SE-2, 31 JAN 2019 to 28 FEB 2019