

LOC/DME I-DMP 111.7 Chan 54	APP CRS 234°	Rwy Idg TDZE Apt Elev 10000 409 435
---	------------------------	---

ILS or LOC RWY 23R

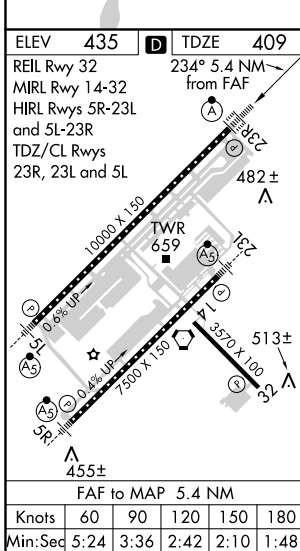
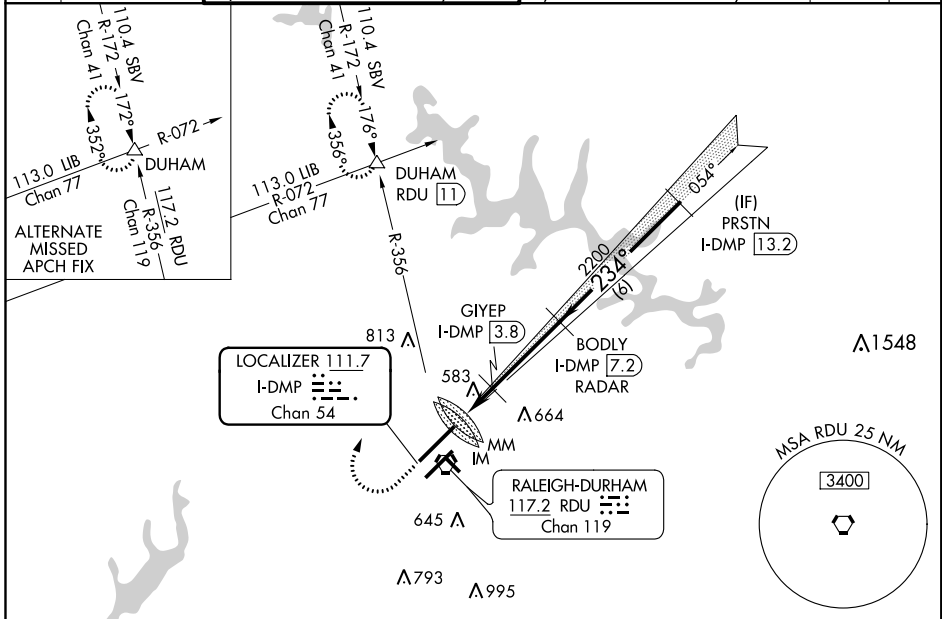
RALEIGH-DURHAM INTL (RDU)

RADAR required for procedure entry, DME or RADAR required. ALSF-2

MISSED APPROACH: Climb to 1000 then climbing right turn to 2200 on heading 030° and on RDU VORTAC R-356 to DUHAM INT/RDU 11 DME and hold.

Simultaneous approach authorized.

D-ATIS 123.8	RALEIGH APP CON 128.3 307.9	(EAST) RALEIGH TOWER (WEST) 127.45 257.8 119.3 257.8 Rwys 5R-23L and 1-4-32 Rwy 5L-23R	(EAST) GND CON (WEST) 121.9 348.6 121.7 348.6 Rwys 5R-23L and 1-4-32 Rwy 5L-23R	CLNC DEL 120.1	CPDLC
------------------------	---------------------------------------	--	---	--------------------------	-------



ELEV 435	D TDZE 409	234° 5.4 NM from FAF	RDU R-356	DUHAM	VGSI and ILS glidepath not coincident (VGSI Angle 3.00/TCH 69).	BODLY I-DMP [7.2] RADAR	PRSTN I-DMP [13.2]
REIL Rwy 32	MIRL Rwy 1-4-32	HIRL Rwys 5R-23L and 5L-23R	TDZ/CL Rwys 23R, 23L and 5L				
*LOC only.							
GSI 3.00° TCH 56							
0.11 0.3 0.9 0.7 3.4 NM 6 NM							
CATEGORY	A		B		C		D
S-ILS 23R	609/18 200 (200-1/2)						
S-LOC 23R	1160/24 751 (800-1/2)	1160/40 751 (800-3/4)	1160-1 725 (800-1)	1160-2 1/4 725 (800-2 1/4)	1160-2 725 (800-2)	1160-2 1/2 725 (800-2 1/2)	
GIYEP FIX MINIMUMS							
S-LOC 23R	900/24 491 (500-1/2)	900/40 491 (500-3/4)	900/50 491 (500-1)				
CIRCLING	960-1	525 (600-1)	1040-1 3/4 605 (700-1 3/4)	1180-2 1/2 745 (800-2 1/2)			