

LOC/DME I-GKK <b>109.1</b> Chan 28	APP CRS <b>054°</b>	Rwy Idg TDZE Apt Elev	<b>10000</b> <b>384</b> <b>435</b>
--	------------------------	-----------------------------	--

# ILS or LOC RWY 5L

RALEIGH-DURHAM INTL (RDU)

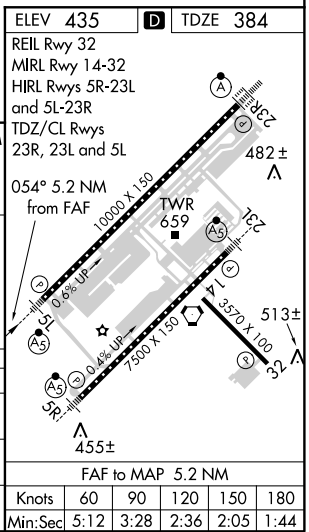
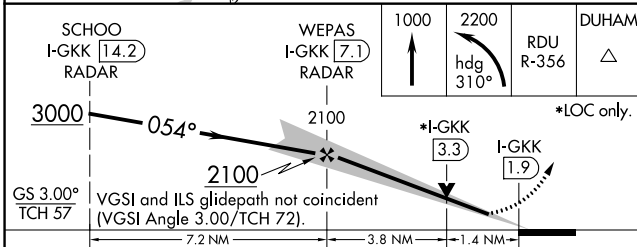
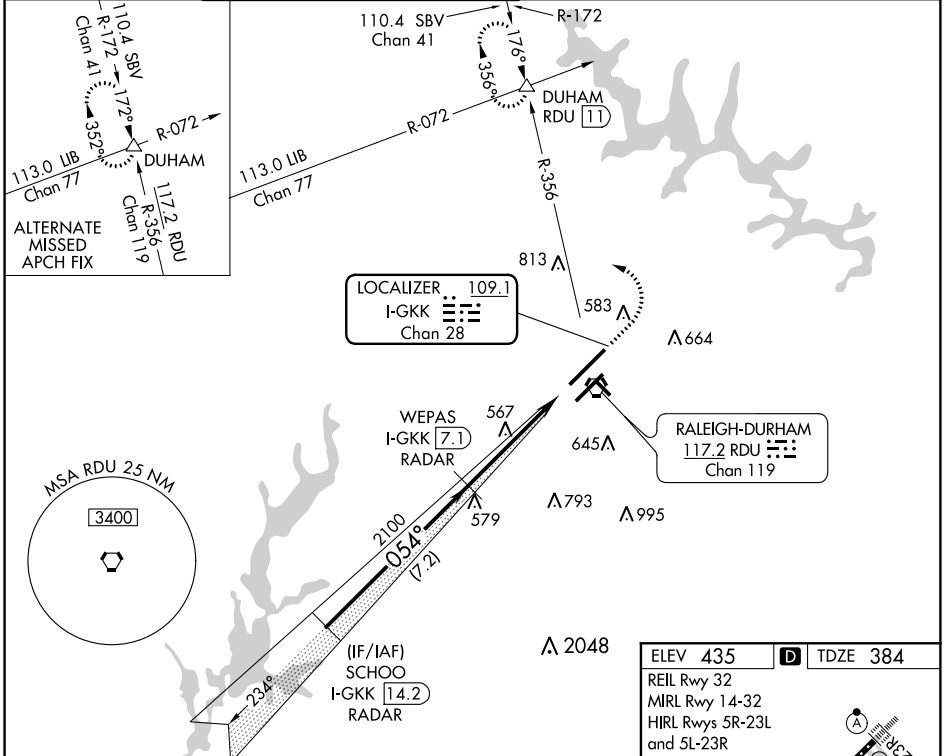
RADAR required for procedure entry, DME required.

Simultaneous approach authorized.

MALSR

MISSED APPROACH: Climb to 1000 then climbing left turn to 2200 on heading 310° and RDU VORTAC R-356 to DUHAM INT/RDU 11 DME and hold.

D-ATIS <b>123.8</b>	RALEIGH APP CON <b>128.3 307.9</b>	(EAST) RALEIGH TOWER <b>127.45 257.8</b> Rwys 5R-23L and 14-32	(WEST) <b>119.3 257.8</b> Rwy 5L-23R	(EAST) GND CON <b>121.9 348.6</b> Rwys 5R-23L and 14-32	(WEST) <b>121.7 348.6</b> Rwy 5L-23R	CLNC DEL <b>120.1</b>	CPDLC
------------------------	---------------------------------------	--	--	---	--	--------------------------	-------



CATEGORY	A	B	C	D
S-ILS 5L	595/18 211 (200-½)			
S-LOC 5L	880/24	496 (500-½)	880/40 496 (500-¾)	880/50 496 (500-1)
CIRCLING	960-1	525 (600-1)	1040-1¾ 605 (700-1¾)	1180-2½ 745 (800-2½)

SE-2, 31 JAN 2019 to 28 FEB 2019

SE-2, 31 JAN 2019 to 28 FEB 2019