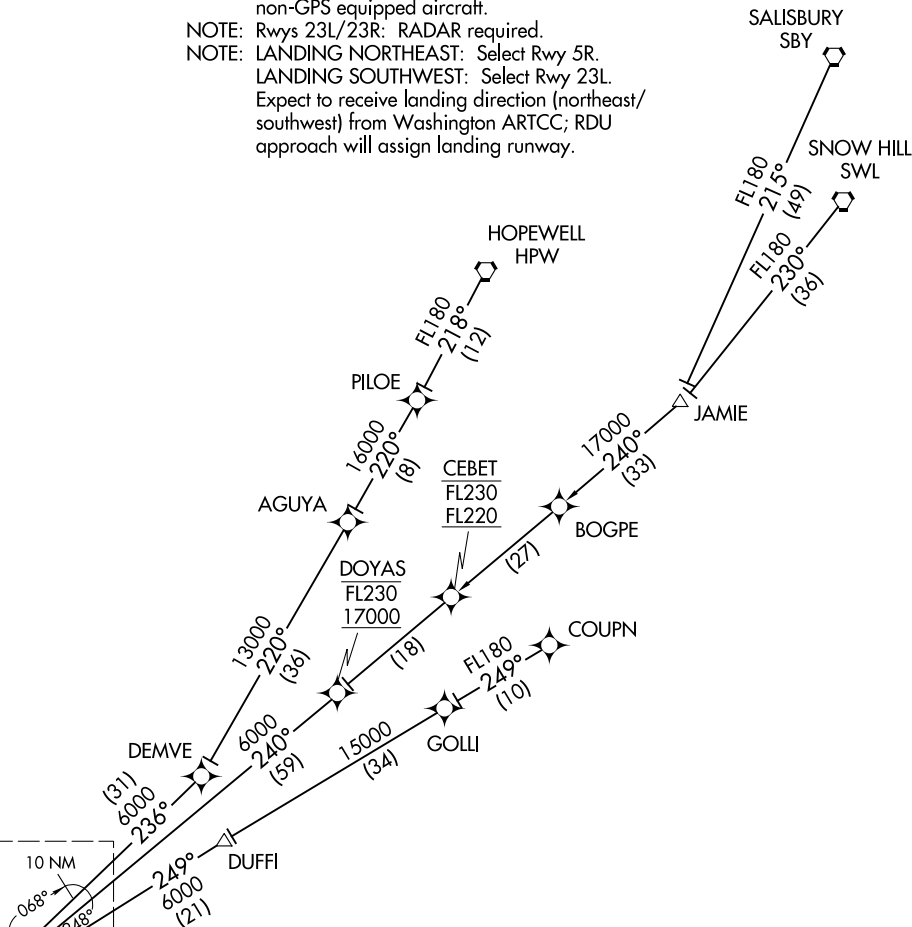


# KAROO TWO ARRIVAL(RNAV) Transition Routes

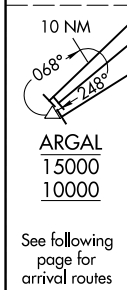
RALEIGH APP CON  
124.95 318.2  
D-ATIS  
123.8

- NOTE: RNAV 1.
  - NOTE: DME/DME/IRU or GPS required.
  - NOTE: Turbojet aircraft only.
  - NOTE: Rwy 5L/5R: RADAR required for non-GPS equipped aircraft.
  - NOTE: Rwy 23L/23R: RADAR required.
  - NOTE: LANDING NORTHEAST: Select Rwy 5R.
  - NOTE: LANDING SOUTHWEST: Select Rwy 23L.
- Expect to receive landing direction (northeast/southwest) from Washington ARTCC; RDU approach will assign landing runway.



SE-2, 31 JAN 2019 to 28 FEB 2019

SE-2, 31 JAN 2019 to 28 FEB 2019



(NARRATIVE ON FOLLOWING PAGE)  
(NOTES CONTINUED ON FOLLOWING PAGE)

COUPN TRANSITION (COUPN.KAROO2)  
HOPEWELL TRANSITION (HPW.KAROO2)  
SALISBURY TRANSITION (SBY.KAROO2)  
SNOW HILL TRANSITION (SWL.KAROO2)

NOTE: Chart not to scale.