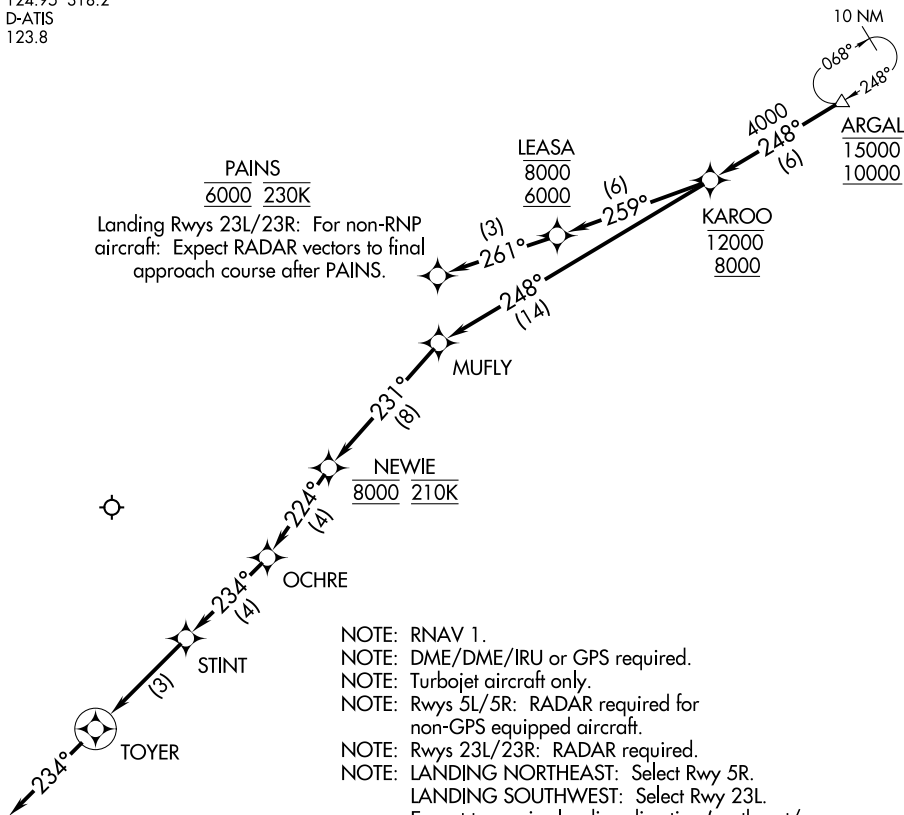


KAROO TWO ARRIVAL(RNAV) Arrival Routes

RALEIGH APP CON
124.95 318.2
D-ATIS
123.8



Landing Rwy's 23L/23R: For non-RNP aircraft: Expect RADAR vectors to final approach course after PAINS.

- NOTE: RNAV 1.
- NOTE: DME/DME/IRU or GPS required.
- NOTE: Turbojet aircraft only.
- NOTE: Rwy's 5L/5R: RADAR required for non-GPS equipped aircraft.
- NOTE: Rwy's 23L/23R: RADAR required.
- NOTE: LANDING NORTHEAST: Select Rwy 5R.
- NOTE: LANDING SOUTHWEST: Select Rwy 23L.
- NOTE: Expect to receive landing direction (northeast/southwest) from Washington ARTCC; RDU approach will assign landing runway.

NOTE: Chart not to scale.

ARRIVAL ROUTE DESCRIPTION

From ARGAL on track 248° to cross KAROO between 8000 and 12000.

LANDING RWYS 5L/R: From KAROO on track 248° to MUFLY, then on track 231° to cross NEWIE at 8000 and at 210K, then on track 224° to OCHRE, then on track 234° to STINT, then on track 234° to TOYER, then on track 234°. Expect RADAR vectors to final approach course.

LANDING RWYS 23L/R: From KAROO on track 259° to cross LEASA between 6000 and 8000, then on track 261° to cross PAINS at 6000 and at 230K. Expect RNAV (RNP) approach.

KAROO TWO ARRIVAL(RNAV) Arrival Routes