

# LWOOD THREE DEPARTURE (RNAV)

D-ATIS  
123.8  
CLNC DEL  
120.1  
CPDLC  
GND CON  
121.9 348.6 (EAST)  
(Rwys 5R-23L, 14-32)  
121.7 348.6 (WEST)  
(Rwy 5L-23R)  
RALEIGH TOWER  
127.45 257.8 (EAST)  
(Rwys 5R-23L, 14-32)  
119.3 257.8 (WEST)  
(Rwy 5L-23R)  
RALEIGH DEP CON  
132.35 256.9

**TOP ALTITUDE:  
7000**

**DEPARTURE ROUTE DESCRIPTION**

**TAKEOFF RWY 5L/5R:** Climb heading 054° or as assigned by ATC, for RADAR vectors to FOCAL, then on depicted route to LWOOD, thence. . . .

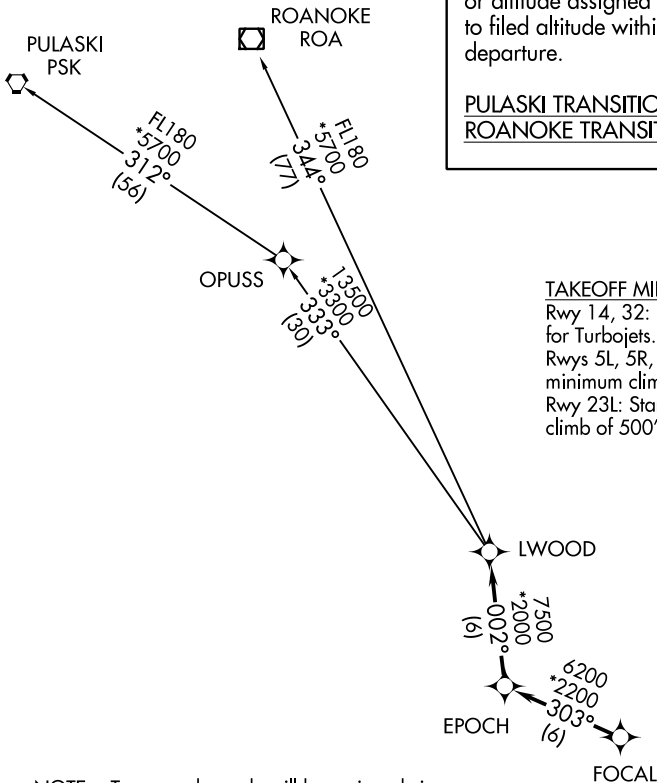
**TAKEOFF RWY 23L/23R:** Climb heading 234° or as assigned by ATC, for RADAR vectors to FOCAL then on depicted route to LWOOD, thence. . . .

. . . .on assigned transition, maintain 7000 or altitude assigned by ATC. Expect clearance to filed altitude within ten minutes after departure.

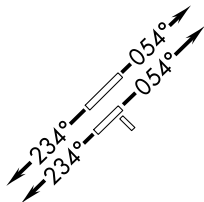
PULASKI TRANSITION (LWOOD3.PSK)  
ROANOKE TRANSITION (LWOOD3.ROA)

**TAKEOFF MINIMUMS:**

Rwy 14, 32: NA-Runway too short for Turbojets.  
Rwys 5L, 5R, 23R: Standard with minimum climb of 500' per NM to 940.  
Rwy 23L: Standard with minimum climb of 500' per NM to 1100'.



- NOTE: Transponder code will be assigned via PDC or Raleigh clearance delivery.
- NOTE: If unable to accept climb rate, advise ATC on initial contact.
- NOTE: RNAV 1.
- NOTE: DME/DME/IRU or GPS required.
- NOTE: RADAR required.
- NOTE: For Turbojet aircraft only.



NOTE: Chart not to scale.

SE-2, 31 JAN 2019 to 28 FEB 2019

SE-2, 31 JAN 2019 to 28 FEB 2019