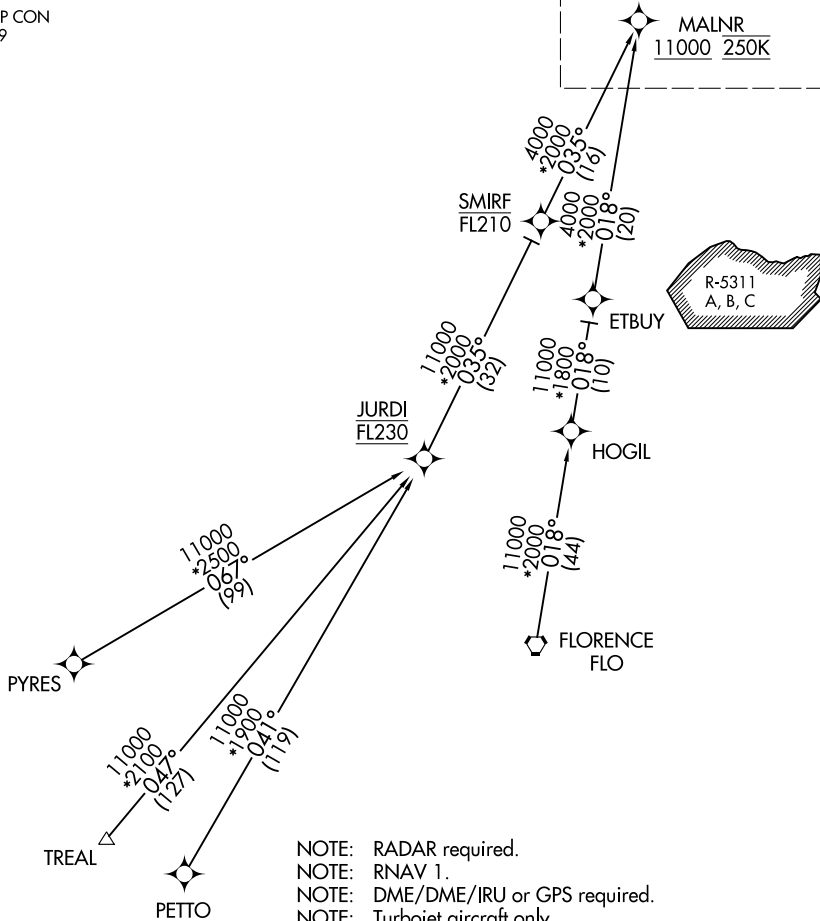


# MALNR FOUR ARRIVAL (RNAV) Transition Routes

RALEIGH-DURHAM INTL (RDU)  
RALEIGH/DURHAM, NORTH CAROLINA

D-ATIS  
123.8  
RALEIGH APP CON  
128.3 307.9

See following page for Arrival Routes



- NOTE: RADAR required.
- NOTE: RNAV 1.
- NOTE: DME/DME/IRU or GPS required.
- NOTE: Turbojet aircraft only.
- NOTE: FLORENCE TRANSITION: Assigned by ATC only.

(CONTINUED ON FOLLOWING PAGE)  
(NARRATIVE ON FOLLOWING PAGE)

FLORENCE TRANSITION (FLO.MALNR4)  
PETTO TRANSITION (PETTO.MALNR4)  
PYRES TRANSITION (PYRES.MALNR4)  
TREAL TRANSITION (TREAL.MALNR4)

NOTE: Chart not to scale.

SE-2, 31 JAN 2019 to 28 FEB 2019

SE-2, 31 JAN 2019 to 28 FEB 2019