

# PACKK EIGHT DEPARTURE

D-ATIS  
123.8  
CLNC DEL  
120.1  
CPDLC  
RALEIGH DEP CON  
132.35 256.9 (230°-024°)

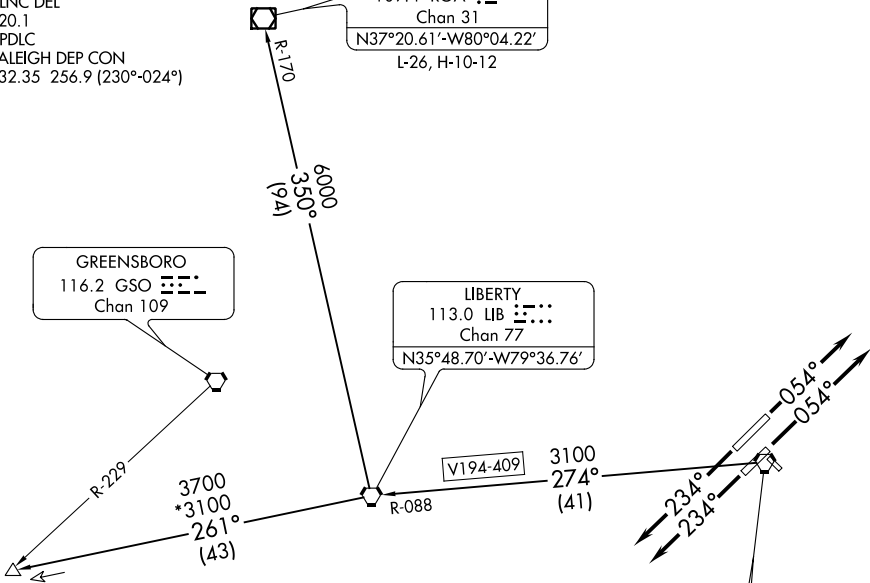
ROANOKE  
109.4 ROA  
Chan 31  
N37°20.61'-W80°04.22'  
L-26, H-10-12

GREENSBORO  
116.2 GSO  
Chan 109

LIBERTY  
113.0 LIB  
Chan 77  
N35°48.70'-W79°36.76'

V194-409  
3100  
274°  
(41)

RALEIGH-DURHAM  
117.2 RDU  
Chan 119  
N35°52.35'-W78°47.00'



NOTE: RADAR required.  
NOTE: Turbojets only.

TAKEOFF MINIMUMS  
Rwys 14, 32: NA-ATC.  
Rwys 5L/R, 23L/R: Standard.

NOTE: Chart not to scale.

## DEPARTURE ROUTE DESCRIPTION

TAKEOFF RWYS 5L/R: Climb heading 054°, thence. . . .

TAKEOFF RWYS 23L/R: Climb heading 234°, thence. . . .

. . . . as assigned to join filed route/fix, expect clearance to filed altitude/flight level ten minutes after departure.

ROANOKE TRANSITION (PACK8.ROA): From over RDU VORTAC on RDU R-274 and LIB R-088 to LIB VORTAC, then on LIB R-350 and ROA R-170 to ROA VOR/DME.

SHPRD TRANSITION (PACK8.SHPRD): From over RDU VORTAC on RDU R-274 and LIB R-088 to LIB VORTAC, then on LIB R-261 to SHPRD.

SE-2, 31 JAN 2019 to 28 FEB 2019

SE-2, 31 JAN 2019 to 28 FEB 2019