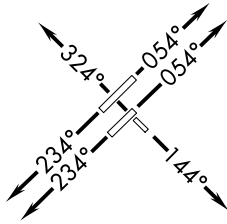


# ROZBO THREE DEPARTURE (RNAV)

**TOP ALTITUDE:**  
**(JETS) 7000/(PROPS) 2000**

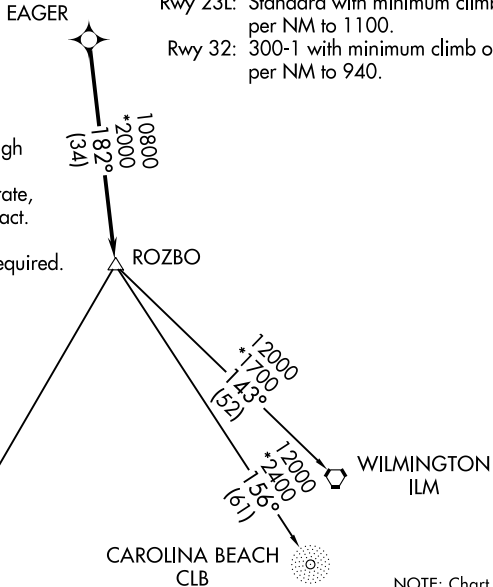
D-ATIS  
123.8  
CLNC DEL  
120.1  
CPDLC  
GND CON  
121.9 348.6 (EAST)  
(Rwys 5R-23L, 14-32)  
121.7 348.6 (WEST)  
(Rwy 5L-23R)  
RALEIGH TOWER  
127.45 257.8 (EAST)  
(Rwys 5R-23L, 14-32)  
119.3 257.8 (WEST)  
(Rwy 5L-23R)  
RALEIGH DEP CON  
125.3 353.675



### TAKEOFF MINIMUMS

Rwys 5L, 5R, 14, 23R: Standard with minimum climb of 500' per NM to 940.  
Rwy 23L: Standard with minimum climb of 500' per NM to 1100.  
Rwy 32: 300-1 with minimum climb of 500' per NM to 940.

- NOTE: Transponder code will be assigned via PDC or Raleigh clearance delivery.  
NOTE: If unable to accept climb rate, advise ATC on initial contact.  
NOTE: RNAV 1.  
NOTE: DME/DME/IRU or GPS required.  
NOTE: RADAR required.



NOTE: Chart not to scale.

**DEPARTURE ROUTE DESCRIPTION**

**TAKEOFF RWYS 5L/R:** Climb heading 054° or as assigned by ATC, expect RADAR vectors to EAGER then on track 182° to ROZBO, thence. . . .  
**TAKEOFF RWY 14:** Climb heading 144° or as assigned by ATC, expect RADAR vectors to EAGER then on track 182° to ROZBO, thence. . . .  
**TAKEOFF RWYS 23L/R:** Climb heading 234° or as assigned by ATC, expect RADAR vectors to EAGER then on track 182° to ROZBO, thence. . . .  
**TAKEOFF RWY 32:** Climb heading 324° or as assigned by ATC, expect RADAR vectors to EAGER then on track 182° to ROZBO, thence. . . .

. . . .on assigned transition, turbojets maintain 7000, propellers maintain 2000. Expect clearance to filed altitude within ten minutes after departure.

CAROLINA BEACH TRANSITION (ROZBO3.CLB)  
CHARLESTON TRANSITION (ROZBO3.CHS)  
WILMINGTON TRANSITION (ROZBO3.ILM)

SE-2, 31 JAN 2019 to 28 FEB 2019

SE-2, 31 JAN 2019 to 28 FEB 2019

# ROZBO THREE DEPARTURE (RNAV)