

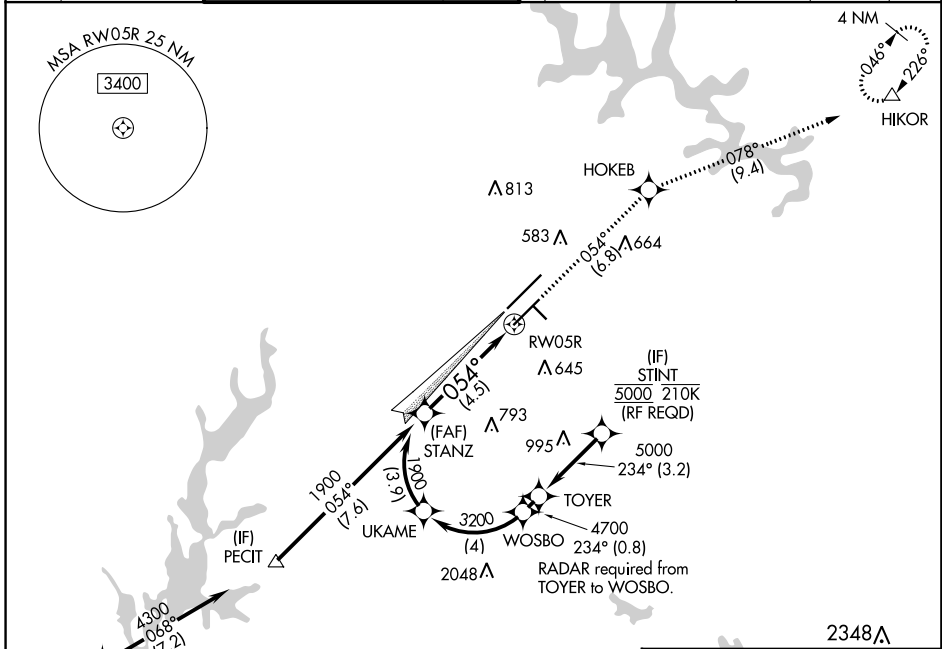
APP CRS	Rwy Idg	<b>7500</b>
<b>054°</b>	TDZE	<b>420</b>
	Apt Elev	<b>435</b>

# RNAV (RNP) Z RWY 5R

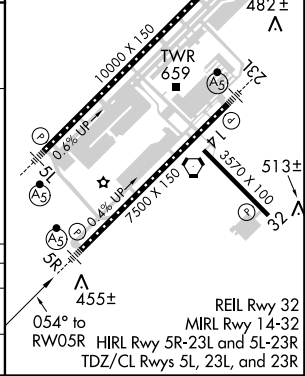
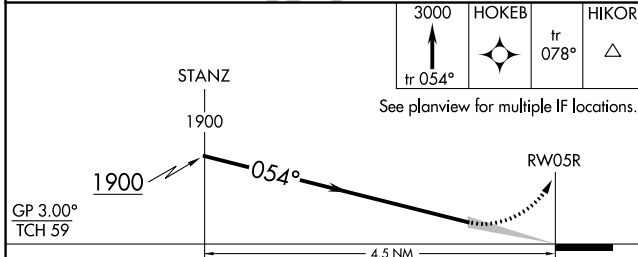
RALEIGH-DURHAM INTL (RDU)

RNP AR APCH.		MALSR	MISSED APPROACH: Climb to 3000 on track 054° to HOKEB and on track 078° to HIKOR and hold.
<p>▼ For uncompensated Baro-VNAV systems, LNAV/VNAV NA below -9°C or above 54°C. Use of FD or AP providing RNAV track guidance required during simultaneous operations. For inop ALS, increase RNP 0.30 all Cats visibility to RVR 4500. Simultaneous approach authorized, except for arrivals at STINT.</p>			

D-ATIS	RALEIGH APP CON	(EAST) RALEIGH TOWER (WEST)	(EAST) GND CON (WEST)	CLNC DEL	CPDLC
<b>123.8</b>	<b>128.3 307.9</b>	<b>127.45 257.8</b> Rwys 5R-23L and 14-32	<b>119.3 257.8</b> Rwy 5L-23R	<b>121.9 348.6</b> Rwys 5R-23L and 14-32	<b>121.7 348.6</b> Rwy 5L-23R



ELEV 435	TDZE 420
----------	----------



CATEGORY	A	B	C	D
RNP 0.30 DA	817/35 397 (400-%)			

## AUTHORIZATION REQUIRED

SE-2, 31 JAN 2019 to 28 FEB 2019

SE-2, 31 JAN 2019 to 28 FEB 2019