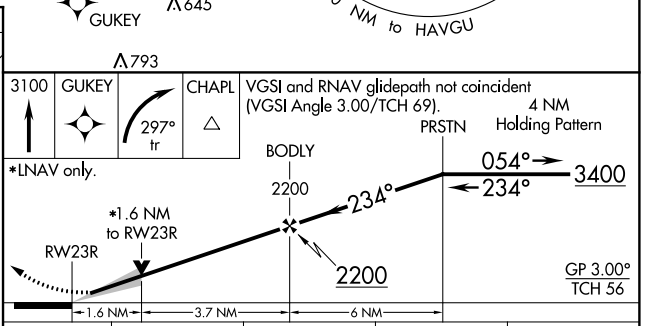
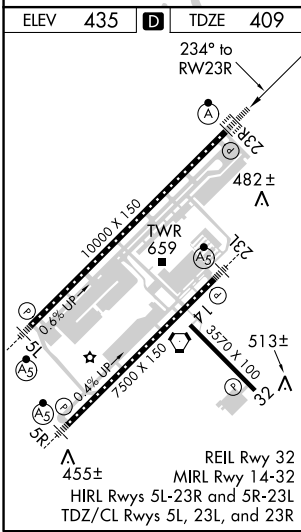
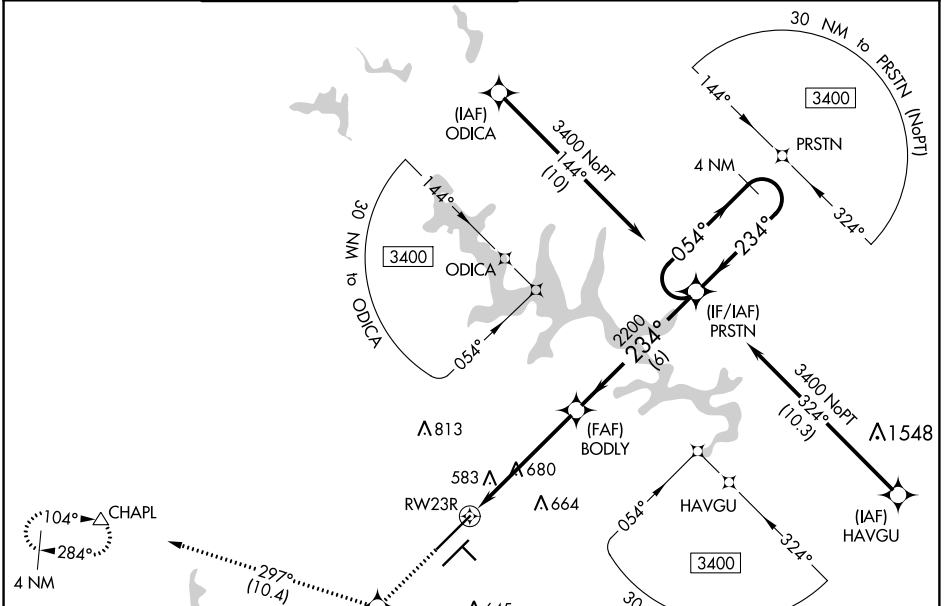


WAAS <b>CH 45613</b> <b>W23A</b>	APP CRS <b>234°</b>	Rwy Idg <b>10000</b> TDZE <b>409</b> Apt Elev <b>435</b>
--	------------------------	--

# RNAV (GPS) Y RWY 23R

RALEIGH-DURHAM INTL (RDU)

RNP APCH.		<p>For uncompensated Baro-VNAV systems, LNAV/VNAV NA below -15°C (5°F) or above 48°C (118°F). Simultaneous approach authorized. LNAV procedure NA during simultaneous operations. Use of FD or AP providing RNAV track guidance required during simultaneous operations.</p>		ALSF-2 	MISSED APPROACH: Climb to 3100 direct GUKEY and right turn on 297° track to CHAPL and hold.
D-ATIS	RALEIGH APP CON	(EAST) RALEIGH TOWER (WEST)	(EAST) GND CON (WEST)	CLNC DEL	CPDLC
<b>123.8</b>	<b>128.3 307.9</b>	<b>127.45 257.8</b> Rwys 5R-23L and 1-4-32	<b>119.3 257.8</b> Rwy 5L-23R	<b>121.9 348.6</b> Rwys 5R-23L and 1-4-32	<b>121.7 348.6</b> Rwy 5L-23R



CATEGORY	A	B	C	D
LPV DA		609/18	200 (200-½)	
LNAV/VNAV DA		927/60	518 (500-1¼)	
LNAV MDA	1000/24	591 (600-½)	1000/50 591 (600-1)	1000/60 591 (600-1¼)
CIRCLING	1000-1	565 (600-1)	1040-1¾ 605 (700-1¾)	1180-2½ 745 (800-2½)

SE-2, 31 JAN 2019 to 28 FEB 2019

SE-2, 31 JAN 2019 to 28 FEB 2019