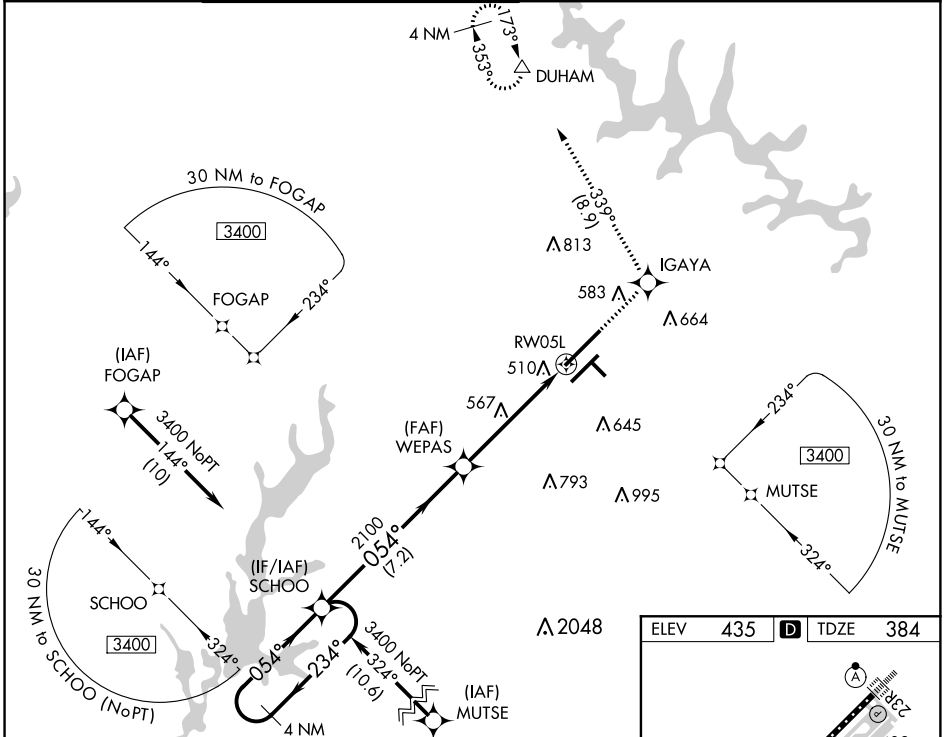


WAAS CH <b>48813</b> <b>W05A</b>	APP CRS <b>054°</b>	Rwy Idg <b>10000</b> TDZE <b>384</b> Apt Elev <b>435</b>
----------------------------------------	------------------------	----------------------------------------------------------------

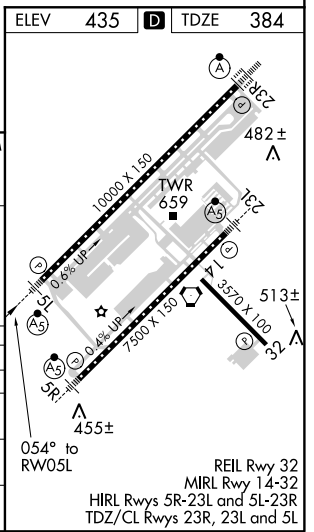
# RNAV (GPS) Y RWY 5L

RALEIGH-DURHAM INTL (RDU)

RNP APCH.		MALSR		MISSED APPROACH: Climb to 2200 direct IGAYA and on track 339° to DUHAM and hold.			
<p>⚠ For uncompensated Baro-VNAV systems, LNAV/VNAV NA below -1.5°C (5°F) or above 48°C (118°F). Simultaneous approach authorized. LNAV procedure NA during simultaneous operations. Use of FD or AP providing RNAV track guidance required during simultaneous operations.</p>							
D-ATIS	RALEIGH APP CON	(EAST) RALEIGH TOWER	(WEST)	(EAST) GND CON	(WEST)	CLNC DEL	CPDLC
<b>123.8</b>	<b>128.3 307.9</b>	<b>127.45 257.8</b>	<b>119.3 257.8</b>	<b>121.9 348.6</b>	<b>121.7 348.6</b>	<b>120.1</b>	
		Rwys 5R-23L and 1-4-32		Rwys 5R-23L and 1-4-32		Rwy 5L-23R	



4 NM Holding Pattern		SCHOO		2200 IGAYA		tr DUHAM	
3400 ← 234°		→ 054°		2100		*1.4 NM to RW05L	
GP 3.00°		TCH 57		2100		*LNAV only.	
VGS1 and RNAV glidepath not coincident (VGS1 Angle 3.00/TCH 72).		7.2 NM		3.8 NM		1.4 NM	
CATEGORY	A	B	C	D			
LPV DA	595/24			211 (200-½)			
LNAV/VNAV DA	792/50			408 (400-1)			
LNAV MDA	880/24	496 (500-½)	880/40	496 (500-¾)	880/50	496 (500-1)	
CIRCLING	960-1	525 (600-1)	1040-1¾	605 (700-1¾)	1180-2½	745 (800-2½)	



SE-2, 31 JAN 2019 to 28 FEB 2019

SE-2, 31 JAN 2019 to 28 FEB 2019