

WAAS CH <b>90213</b> <b>W05B</b>	APP CRS <b>054°</b>	Rwy Idg <b>7500</b> TDZE <b>420</b> Apt Elev <b>435</b>
--	------------------------	---

# RNAV (GPS) Y RWY 5R

RALEIGH-DURHAM INTL (RDU)

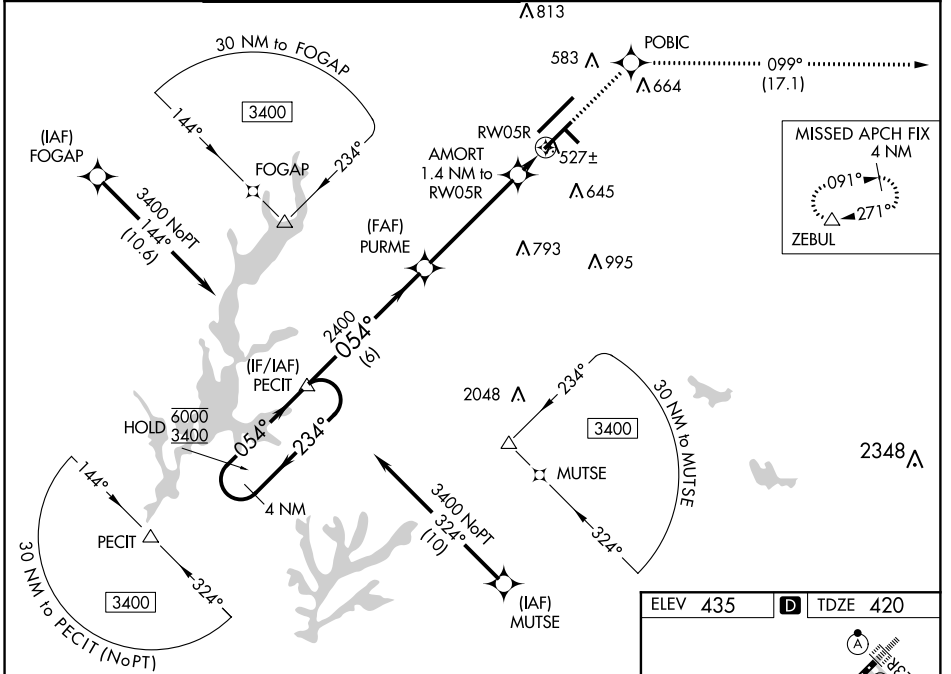
RNP APCH.

Simultaneous approach authorized. LNAV procedure NA during simultaneous operations.

For uncompensated Baro-VNAV systems, LNAV/VNAV NA below -10°C (14°F) or above 54°C (130°F). Use of FD or AP required during simultaneous operations. For inop ALS, increase LNAV/VNAV all Cats visibility to RVR 4500 and LNAV Cats C/D visibility to RVR 5500.

MALSR MISSED APPROACH: Climb to 2600 direct POBIC and on track 099° to ZEBUL and hold.

D-ATIS	RALEIGH APP CON	(EAST) RALEIGH TOWER	(WEST)	(EAST) GND CON	(WEST)	CLNC DEL	CPDLC
123.8	128.3 307.9	127.45 257.8	119.3 257.8	121.9 348.6	121.7 348.6	120.1	
		Rwys 5R-23L and 14-32	Rwy 5L-23R	Rwys 5R-23L and 14-32	Rwy 5L-23R		



VGSI and RNAV glidepath not coincident (VGSI Angle 3.00/TCH 62).

4 NM Holding Pattern

PECIT

PURME

AMORT 1.4 NM to RWY 5R

RWY 5R

ZEBUL

tr 099°

\*LNAV only.

6000 ← 234°

3400 → 054°

2400

\*900

6 NM

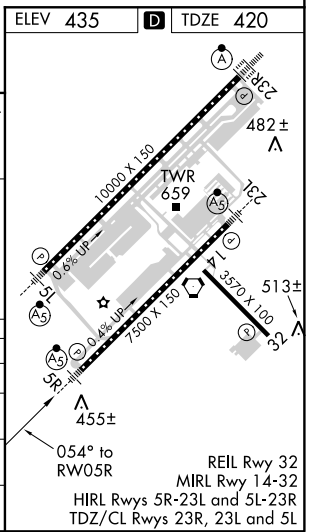
4.7 NM

1.4 NM

GP 3.00°

TCH 56

CATEGORY	A	B	C	D
LPV DA		620/24	200 (200-½)	
LNAV/VNAV DA		710/24	290 (300-½)	
LNAV MDA	780/24	360 (400-½)	780/30	360 (400-¾)
<b>C</b> CIRCLING	960-1	525 (600-1)	1040-1¾ 605 (700-1¾)	1180-2½ 745 (800-2½)



SE-2, 31 JAN 2019 to 28 FEB 2019

SE-2, 31 JAN 2019 to 28 FEB 2019