

(CONLE3.CONLE) 17173

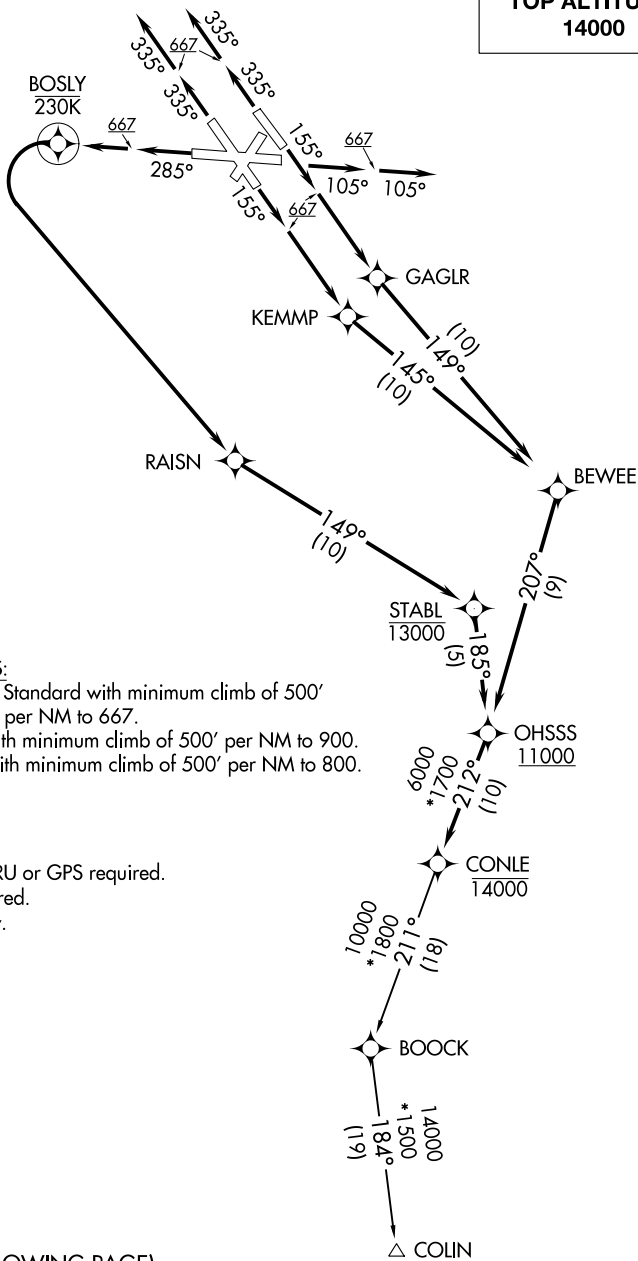
AL-804 (FAA)

BALTIMORE/
WASHINGTON INTL THURGOOD MARSHALL (BWI)
BALTIMORE, MARYLAND

CONLE THREE DEPARTURE (RNAV)

**TOP ALTITUDE:
14000**

D-ATIS
115.1 127.8
CLNC DEL
118.05
CPDLC
GND CON
121.9
BALTIMORE TOWER
119.4 257.8
POTOMAC DEP CON
124.55 317.425



TAKEOFF MINIMUMS:

Rwys 10, 15L/R, 28: Standard with minimum climb of 500' per NM to 667.

Rwy 33L: Standard with minimum climb of 500' per NM to 900.

Rwy 33R: Standard with minimum climb of 500' per NM to 800.

- NOTE: RNAV 1
- NOTE: DME/DME/IRU or GPS required.
- NOTE: RADAR required.
- NOTE: Turbojets only.

(NARRATIVE ON FOLLOWING PAGE)
(NOTES CONTINUED ON FOLLOWING PAGE)

NOTE: Chart not to scale.

CONLE THREE DEPARTURE (RNAV)
(CONLE3.CONLE) 04FEB16

BALTIMORE/
WASHINGTON INTL THURGOOD MARSHALL (BWI)
BALTIMORE, MARYLAND

NE-3, 31 JAN 2019 to 28 FEB 2019

NE-3, 31 JAN 2019 to 28 FEB 2019