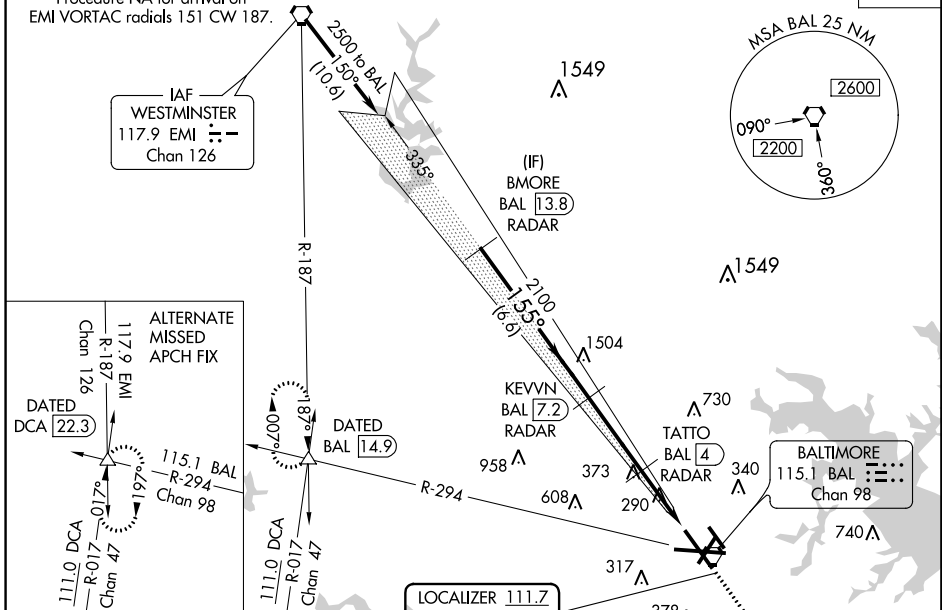


LOC I-FND 111.7	APP CRS 155°	Rwy Idg 8300	TDZE 138
		Apt Elev 146	

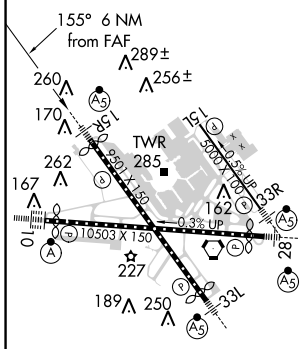
BALTIMORE/
WASHINGTON INTL THURGOOD MARSHALL (BWI) **I LS or LOC RWY 15R**

⚠ Simultaneous approach authorized with Rwy 15L. DME or Radar required. DME from BAL VORTAC. # RVR 1800 authorized with use of FD or AP or HUD to DA.	MALSR 	MISSED APPROACH: Climb to 900 then climbing right turn to 2600 on BAL VORTAC R-294 to DATED INT/BAL 14.9 DME and hold.	
			POTOMAC APP CON (020°-100°) 119.7 290.475 (131°-180°) (101°-130°) 128.7 307.9 (181°-019°)

D-ATIS 115.1 127.8	POTOMAC APP CON (020°-100°) 119.7 290.475 (131°-180°) (101°-130°) 128.7 307.9 (181°-019°)	BALTIMORE TOWER 119.4 257.8	GND CON 121.9	CLNC DEL 118.05
------------------------------	---	---------------------------------------	-------------------------	---------------------------



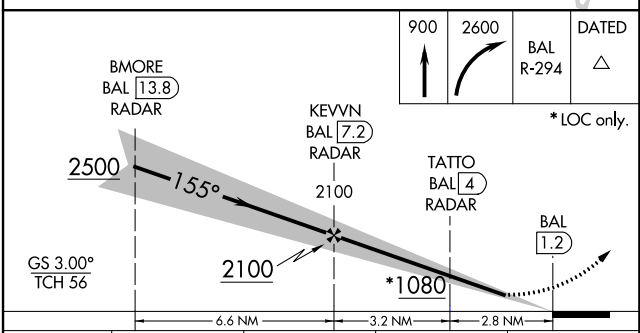
ELEV 146	D	TDZE 138
-----------------	----------	-----------------



TDZ/CL Rwy 10 and 33L
REIL Rwy 15L and 33R
HIRL all rwy

FAF to MAP 6 NM

Knots	60	90	120	150	180
Min:Sec	6:00	4:00	3:00	2:24	2:00



CATEGORY	A	B	C	D
S-ILS 15R		#338/24	200 (200-1/2)	
S-LOC 15R	540/24	402 (400-1/2)	540/40	402 (400-3/4)
C CIRCLING	640-1 494 (500-1)	660-1 514 (600-1)	700-1 1/2 554 (600-1 1/2)	880-2 1/4 734 (800-2 1/4)

NE-3, 31 JAN 2019 to 28 FEB 2019

NE-3, 31 JAN 2019 to 28 FEB 2019