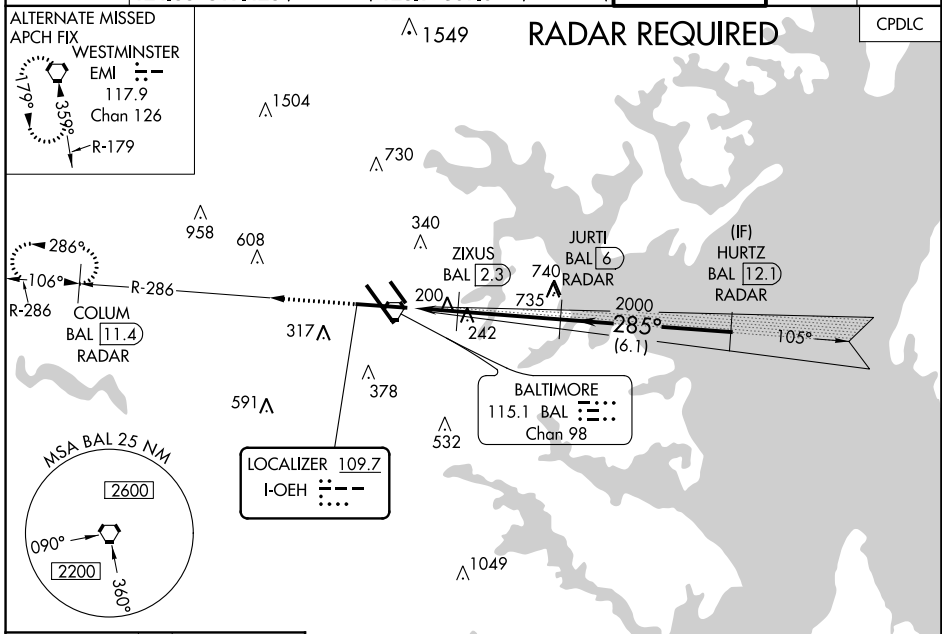


LOC I-OEH	APP CRS	Rwy Idg	<b>9802</b>
<b>109.7</b>	<b>285°</b>	TDZE	<b>143</b>
		Apt Elev	<b>143</b>

BALTIMORE/  
WASHINGTON INTL THURGOOD MARSHALL (BWI)  
**ILS or LOC RWY 28**

<p>▼ DME or radar required. For inoperative MALS, increase S-LOC 28 Cat C/D visibility to 1½ mile, and increase ZIXUS fix S-LOC 28 Cat C/D visibility to RVR 4500.</p> <p>▲ **RVR 1800 authorized with the use of FD or AP or HUD to DA.</p>	<p>MALS</p>	<p>MISSED APPROACH: Climb to 2500 on BAL VORTAC R-286 to COLUM/BAL 11.4 DME/RADAR and hold.</p>
--	-------------	---

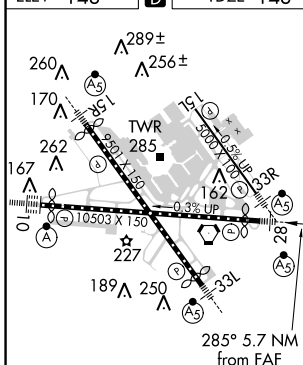
D-ATIS	POTOMAC APP CON	BALTIMORE TOWER	GND CON	CLNC DEL
<b>115.1 127.8</b>	<b>119.0 282.275</b> (020°-100°) <b>119.7 290.475</b> (101°-130°) <b>128.7 307.9</b> (131°-180°) (181°-019°)	<b>119.4 257.8</b>	<b>121.9</b>	<b>118.05</b>



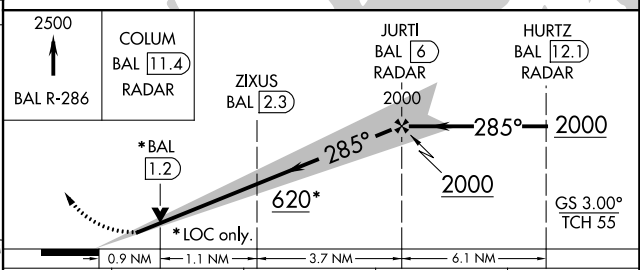
NE-3, 31 JAN 2019 to 28 FEB 2019

NE-3, 31 JAN 2019 to 28 FEB 2019

ELEV 143	<b>D</b>	TDZE 143
----------	----------	----------



Knots	60	90	120	150	180
Min:Sec	5:42	3:48	2:51	2:17	1:54



CATEGORY	A	B	C	D
S-ILS 28	**343/24 200 (200-½)			
S-LOC 28	620/24	477 (500-½)	620/50	477 (500-1)
<b>C</b> CIRCLING	640-1 497 (500-1)	660-1 517 (600-1)	700-1½ 557 (600-½)	860-2¼ 717 (800-2¼)
ZIXUS FIX MINIMUMS (DME REQUIRED)				
S-LOC 28	460/24 317 (400-½)			
<b>C</b> CIRCLING	640-1 497 (500-1)	660-1 517 (600-1)	700-1½ 557 (600-½)	860-2¼ 717 (800-2¼)