

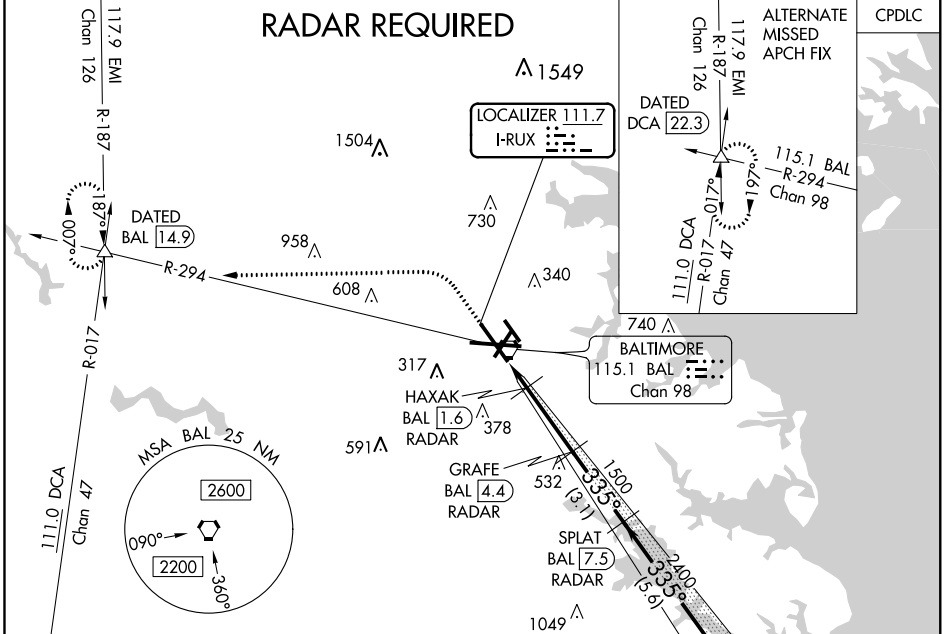
LOC I-RUX 111.7	APP CRS 335°	Rwy ldg TDZE Apt Elev	8300 143 146
---------------------------	------------------------	-----------------------------	---

BALTIMORE/
WASHINGTON INTL THURGOOD MARSHALL (BWI)

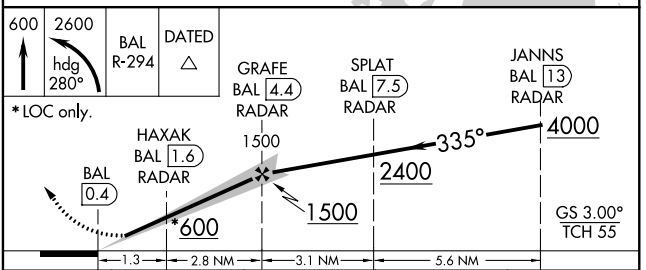
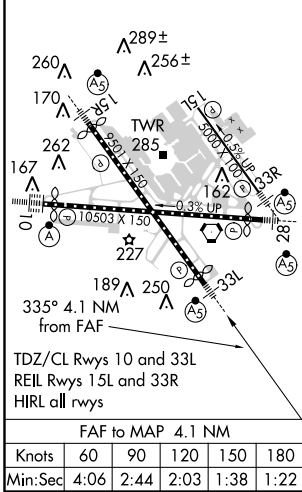
ILS or LOC RWY 33L

⚠ DME or Radar required. Simultaneous approach authorized with ILS or LOC Rwy 33R. DME from BAL VORTAC.	MALSR 	MISSED APPROACH: Climb to 600 then climbing left turn to 2600 on heading 280° and BAL R-294 to DATED INT/BAL 14.9 DME and hold.
--	------------------	---

D-ATIS 115.1 127.8	POTOMAC APP CON 119.0 282.275 (020°-100°) 119.7 290.475 (131°-180°) 124.55 317.425 (101°-130°) 128.7 307.9 (181°-019°)	BALTIMORE TOWER 119.4 257.8	GND CON 121.9	CLNC DEL 118.05
------------------------------	--	---------------------------------------	-------------------------	---------------------------



ELEV 146	D	TDZE 143
----------	----------	----------



CATEGORY	A	B	C	D
S-ILS 33L	343/18		200 (200-½)	
S-LOC 33L	540/24	397 (400-½)	540/40	397 (400-¾)
C CIRCLING	640-1 494 (500-1)	660-1 514 (600-1)	700-1½ 554 (600-1½)	880-2¼ 734 (800-2¼)

NE-3, 31 JAN 2019 to 28 FEB 2019

NE-3, 31 JAN 2019 to 28 FEB 2019