

17173

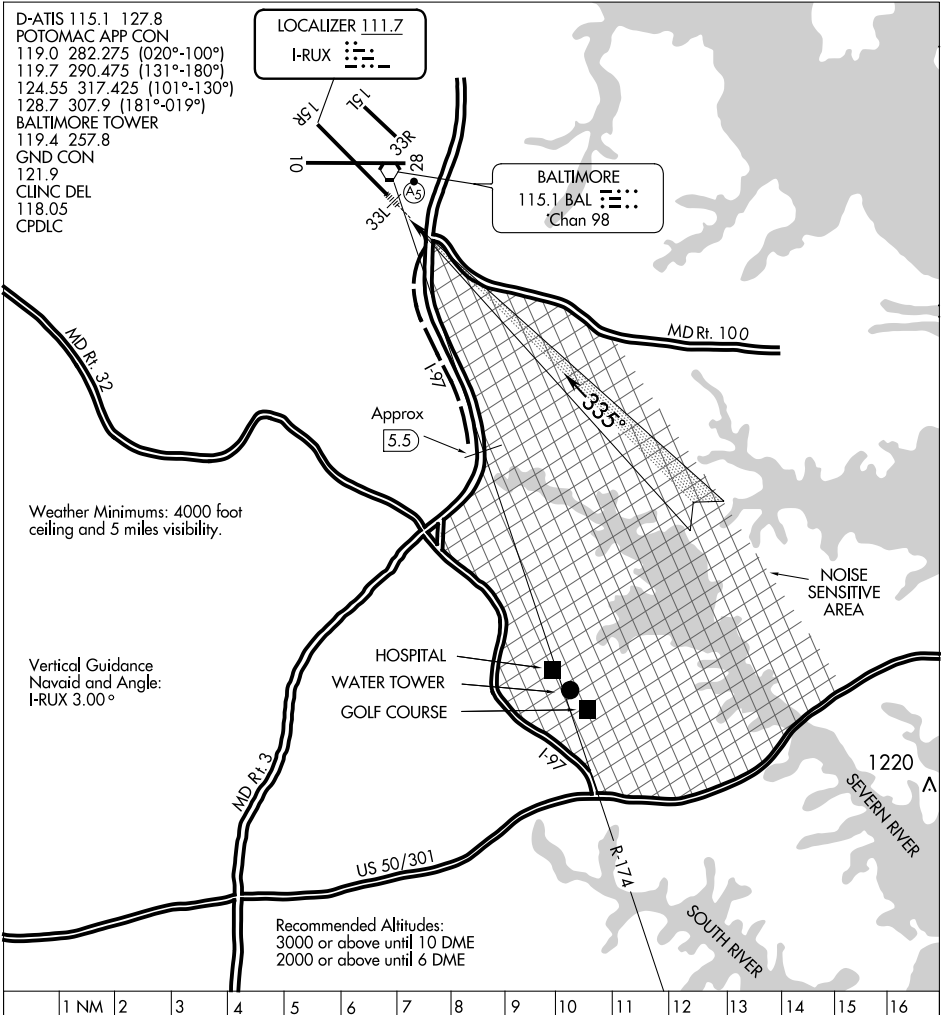
# INTERSTATE VISUAL RWY 33L

BALTIMORE/  
WASHINGTON INTL THURGOOD MARSHALL (BWI)  
AL-804 (FAA) BALTIMORE, MARYLAND

D-ATIS 115.1 127.8  
 POTOMAC APP CON  
 119.0 282.275 (020°-100°)  
 119.7 290.475 (131°-180°)  
 124.55 317.425 (101°-130°)  
 128.7 307.9 (181°-019°)  
 BALTIMORE TOWER  
 119.4 257.8  
 GND CON  
 121.9  
 CLINC DEL  
 118.05  
 CPDLC

LOCALIZER 111.7  
 I-RUX

BALTIMORE  
 115.1 BAL  
 Chan 98



Weather Minimums: 4000 foot ceiling and 5 miles visibility.

Vertical Guidance  
 Navaid and Angle:  
 I-RUX 3.00°

HOSPITAL  
 WATER TOWER  
 GOLF COURSE

Recommended Altitudes:  
 3000 or above until 10 DME  
 2000 or above until 6 DME

1 NM	2	3	4	5	6	7	8	9	10	11	12	13	14	15	16
------	---	---	---	---	---	---	---	---	----	----	----	----	----	----	----

## INTERSTATE VISUAL RWY 33L

Radar vectors will be provided to the BAL 174 RADIAL. When cleared for the Interstate Visual Runway 33L Approach, aircraft will proceed via the BAL 174 radial until over I-97 (Approx. 5.5 DME). Then via I-97 to join Runway 33L final approach course. Runway 33L ILS with MALS R will be on and available for use. Noise sensitive area east of I-97. This procedure applicable to turbo-jets arriving via OTT VORTAC.

# INTERSTATE VISUAL RWY 33L

BALTIMORE/ 39°11'N-76°40'W BALTIMORE, MARYLAND  
 WASHINGTON INTL THURGOOD MARSHALL (BWI)

Amdt 1 05OCT00

NE-3, 31 JAN 2019 to 28 FEB 2019

NE-3, 31 JAN 2019 to 28 FEB 2019