

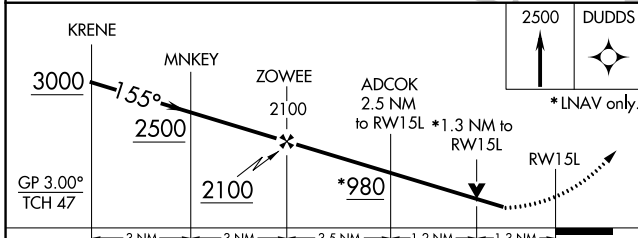
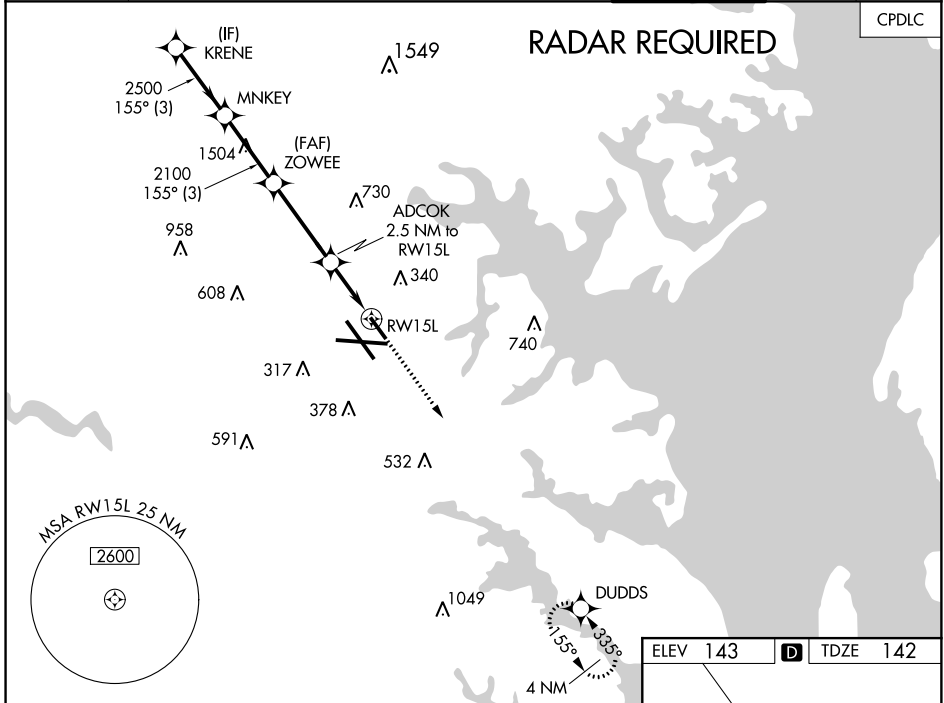
WAAS CH <b>40108</b> <b>W15A</b>	APP CRS <b>155°</b>	Rwy Idg TDZE Apt Elev	<b>5000</b> <b>142</b> <b>143</b>
--	------------------------	-----------------------------	---

BALTIMORE/  
WASHINGTON INTL THURGOOD MARSHALL (BWI) **RNAV (GPS) RWY 15L**

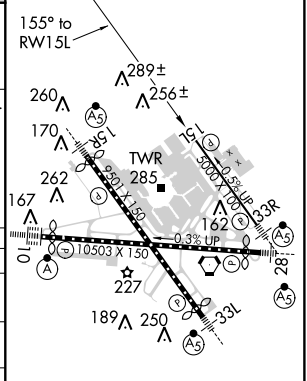
▼ For uncompensated Baro-VNAV systems, LNAV/VNAV NA below -13°C (9°F) or above 54°C (130°F). DME/DME RNP-0.3 NA. Helicopter visibility reduction below RVR 4000 NA. Simultaneous approach authorized. Use of FD or AP providing RNAV track guidance required during simultaneous operations. LNAV procedure NA during simultaneous operations.

MISSED APPROACH: Climb to 2500 direct DUDDS and hold.

D-ATIS <b>115.1 127.8</b>	POTOMAC APP CON (020°-100°) <b>119.7 290.475</b> (131°-180°) (101°-130°) <b>128.7 307.9</b> (181°-019°)	BALTIMORE TOWER <b>119.4 257.8</b>	GND CON <b>121.9</b>	CLNC DEL <b>118.05</b>
------------------------------	---	---------------------------------------	-------------------------	---------------------------



ELEV 143	TDZE 142
----------	----------



CATEGORY	A	B	C	D
LPV DA	544-1 $\frac{3}{8}$	402 (500-1 $\frac{1}{2}$ )		NA
LNAV/VNAV DA	656-1 $\frac{3}{4}$	514 (600-1 $\frac{1}{4}$ )		NA
LNAV MDA	600/55	458 (500-1)		NA
CIRCLING	640-1 497 (500-1)	660-1 517 (600-1)		NA

TDZ/CL Rwy 10 and 33L  
REIL Rwy 15L and 33R  
HIRL all Rwy

NE-3, 31 JAN 2019 to 28 FEB 2019

NE-3, 31 JAN 2019 to 28 FEB 2019