

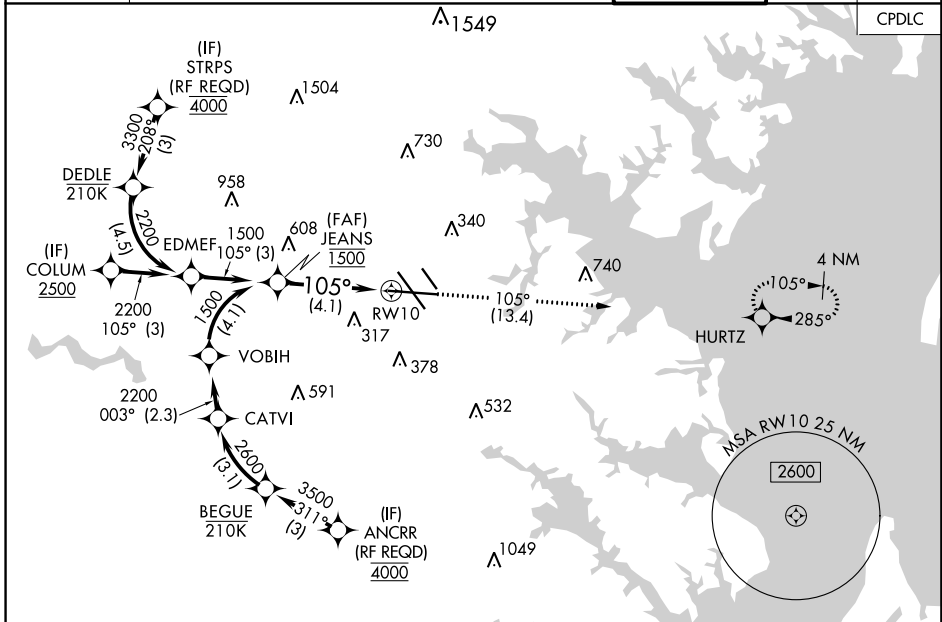
APP CRS	Rwy Idg	9952
105°	TDZE	143
	Apt Elev	143

RNAV (RNP) Z RWY 10

BALTIMORE/WASHINGTON INTL THURGOOD MARSHALL (BWI)

RNP AR APCH.		ALSF-2	MISSED APPROACH: Climb to 2500 on track 105° to HURTZ and hold.
<p>▼ For uncompensated Baro-VNAV systems, procedure NA below -12°C (11°F) or above 54°C (130°F). For inop ALS, increase RNP 0.11 all Cats visibility to RVR 4500, increase RNP 0.30 all Cats visibility to 1¾.</p>			

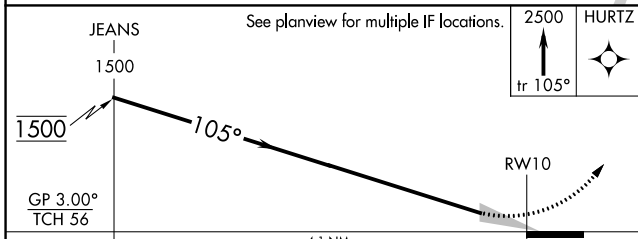
D-ATIS	POTOMAC APP CON	BALTIMORE TOWER	GND CON	CLNC DEL
115.1 127.8	119.0 282.275 (020°-100°) 119.7 290.475 (131°-180°) 124.55 317.425 (101°-130°) 128.7 307.9 (181°-019°)	119.4 257.8	121.9	118.05



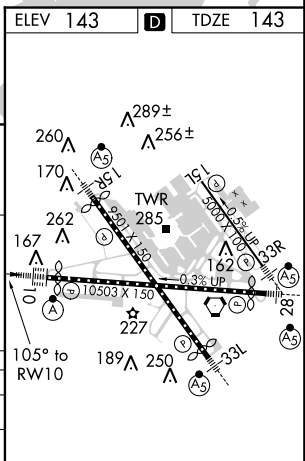
NE-3, 31 JAN 2019 to 28 FEB 2019

NE-3, 31 JAN 2019 to 28 FEB 2019

ELEV 143	TDZE 143
----------	----------



GP 3.00°	TCH 56
CATEGORY	A B C D
RNP 0.11 DA	448/24 305 (400-½)
RNP 0.30 DA	626/60 483 (500-¼)



AUTHORIZATION REQUIRED

TDZ/CL Rwys 10 and 33L
REIL Rwys 15L and 33R
HIRL all Rwys