

APP CRS 155°	Rwy Idg TDZE Apt Elev	8300 138 143
------------------------	-----------------------------	---

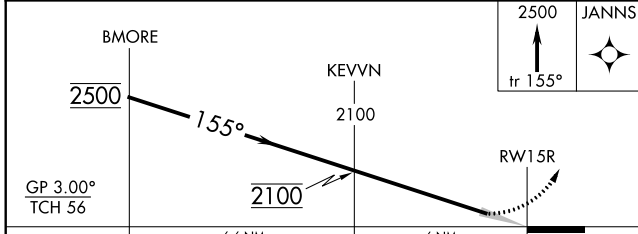
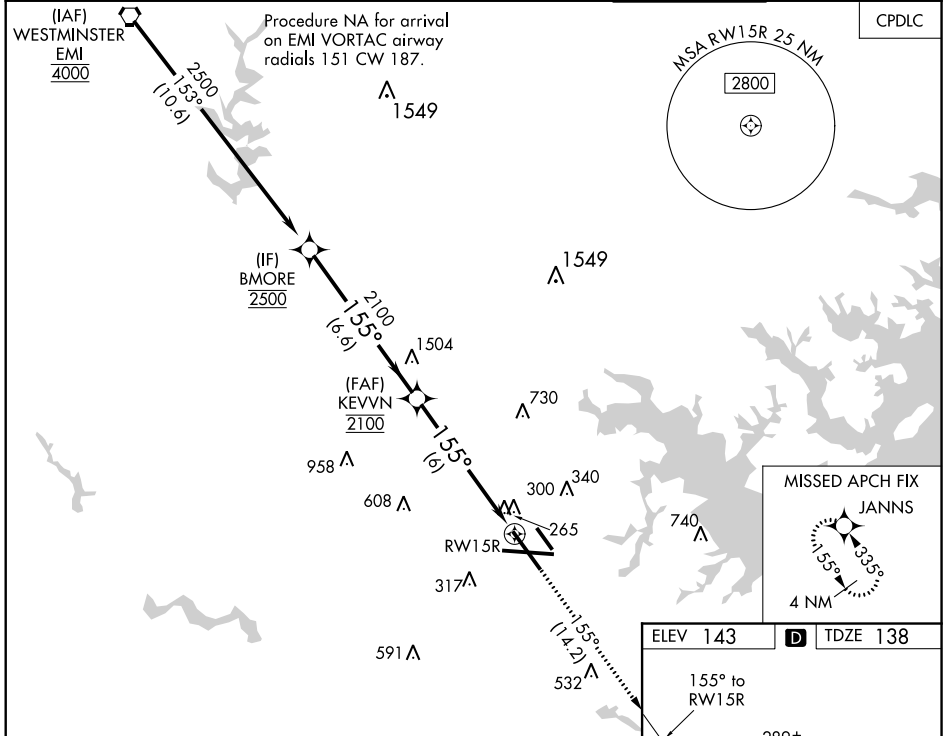
RNAV (RNP) Z RWY 15R

BALTIMORE/WASHINGTON INTL THURGOOD MARSHALL (BWI)

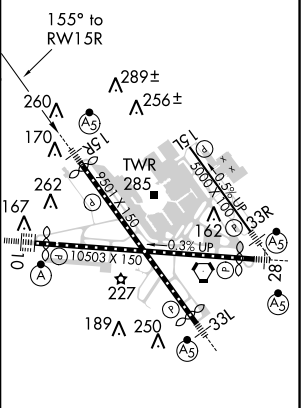
▼ For uncompensated Baro-VNAV systems, procedure NA below -12°C (11°F) or above 54°C (130°F). For inop MALSR, increase RNP 0.11 DA all Cats visibility to 1¼ mile, and RNP 0.30 DA all Cats visibility to 1½ mile. GPS Required.

MALSR  MISSED APPROACH: Climb to 2500 on track 155° to JANNS and hold.

D-ATIS 115.1 127.8	POTOMAC APP CON 119.0 282.275 124.55 317.425	(020°-100°) 119.7 290.475 (101°-130°) 128.7 307.9	(131°-180°) (181°-019°)	BALTIMORE TOWER 119.4 257.8	GND CON 121.9	CLNC DEL 118.05
------------------------------	--	--	----------------------------	---------------------------------------	-------------------------	---------------------------



ELEV 143	D	TDZE 138
----------	----------	----------



CATEGORY	A	B	C	D
RNP 0.11 DA		513/38	375 (400-¾)	
RNP 0.30 DA		588/52	450 (500-1)	

AUTHORIZATION REQUIRED

TDZ/CL Rwy 10 and 33L
REIL Rwy 15L and 33R
HIRL all rwy

NE-3, 31 JAN 2019 to 28 FEB 2019

NE-3, 31 JAN 2019 to 28 FEB 2019

RNAV (RNP) Z RWY 15R