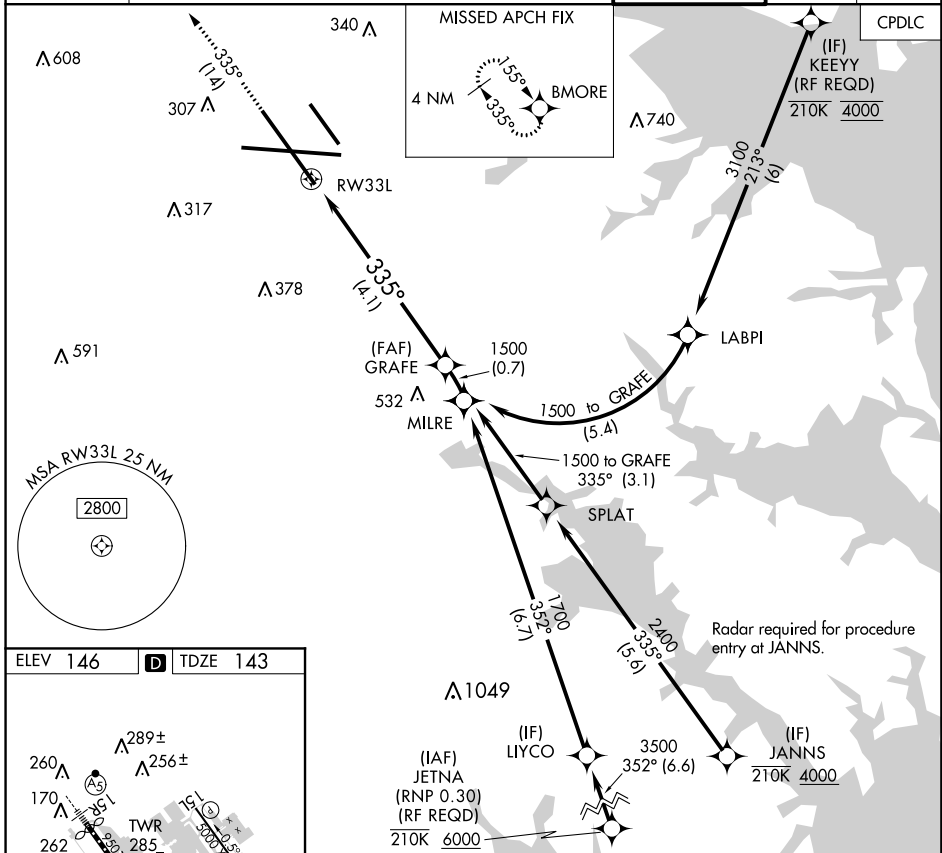


APP CRS 335°	Rwy ldg TDZE Apt Elev	8300 143 146
------------------------	-----------------------------	---

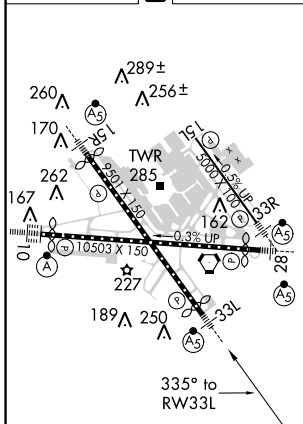
RNAV (RNP) Z RWY 33L
BALTIMORE/WASHINGTON INTL THURGOOD MARSHALL (BWI)

For uncompensated Baro-VNAV systems, procedure NA below -12°C (11°F) or above 54°C (130°F). For inop MALSRL, increase RNP 0.30 all Cats visibility to RVR 5700. GPS required.	MALSRL 	MISSED APPROACH: Climb to 3000 on track 335° to BMORE and hold.
	AS	

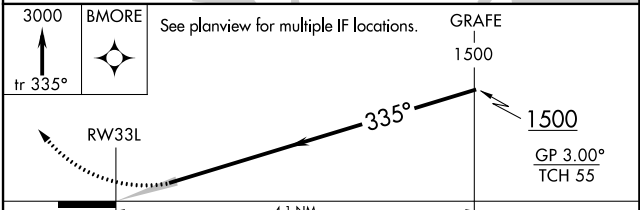
D-ATIS 115.1 127.8	POTOMAC APP CON (020°-100°) 119.7 290.475 (131°-180°) (101°-130°) 128.7 307.9 (181°-019°)	BALTIMORE TOWER 119.4 257.8	GND CON 121.9	CLNC DEL 118.05
------------------------------	---	---------------------------------------	-------------------------	---------------------------



ELEV 146	D	TDZE 143
----------	----------	----------



TDZ/CL Rwy 10 and 33L
REIL Rwy 15L and 33R
HIRL all Rwy



CATEGORY	A	B	C	D
RNP 0.30 DA	496/34	353 (400- $\frac{5}{8}$)		

AUTHORIZATION REQUIRED

NE-3, 31 JAN 2019 to 28 FEB 2019

NE-3, 31 JAN 2019 to 28 FEB 2019