

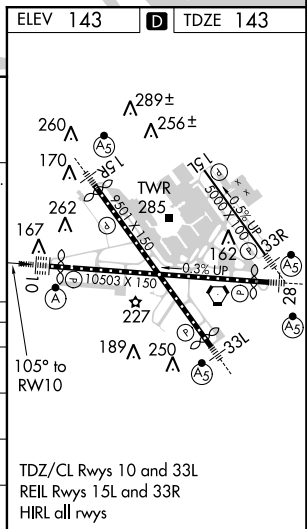
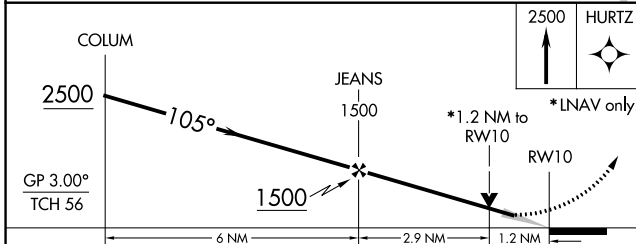
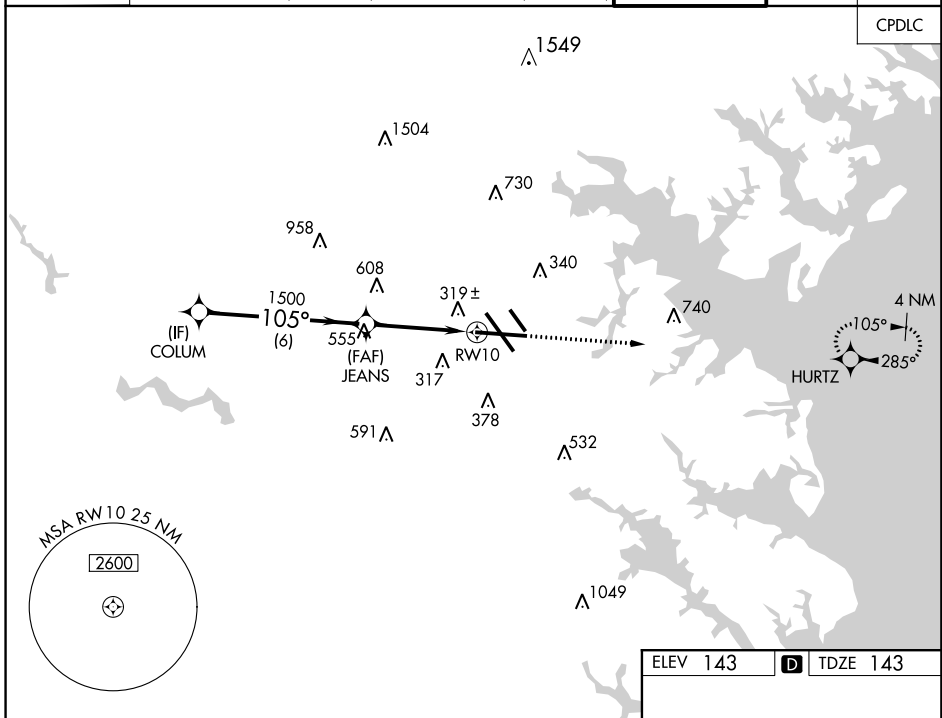
WAAS CH 53707 W10A	APP CRS 105°	Rwy Idg TDZE 143 Apt Elev 143	9952
--	------------------------	---	-------------

RNAV (GPS) Y RWY 10

BALTIMORE/WASHINGTON INTL THURGOOD MARSHALL (BWI)

RNP APCH.	ALSIF-2	MISSED APPROACH: Climb to 2500 direct HURTZ and hold.
<p>▼ For uncompensated Baro-VNAV systems, LNAV/VNAV NA below -12°C (11°F) or above 54°C (130°F).</p> <p>▲</p>		

D-ATIS 115.1 127.8	POTOMAC APP CON (020°-100°) 119.7 290.475 (131°-180°) (101°-130°) 128.7 307.9 (181°-019°)	BALTIMORE TOWER 119.4 257.8	GND CON 121.9	CLNC DEL 118.05
------------------------------	---	---------------------------------------	-------------------------	---------------------------



CATEGORY	A	B	C	D
LPV DA		343/18	200 (200-½)	
LNAV/VNAV DA		586/50	443 (500-1)	
LNAV MDA	580/24	437 (500-½)	580/40	437 (500-¾)
CIRCLING	640-1 497 (500-1)	660-1 517 (600-1)	700-1½ 557 (600-1½)	860-2¼ 717 (800-2¼)

NE-3, 31 JAN 2019 to 28 FEB 2019

NE-3, 31 JAN 2019 to 28 FEB 2019