

WAAS CH 66007 W15B	APP CRS 155°	Rwy Idg TDZE 138 Apt Elev 143	8300
--	------------------------	---	-------------

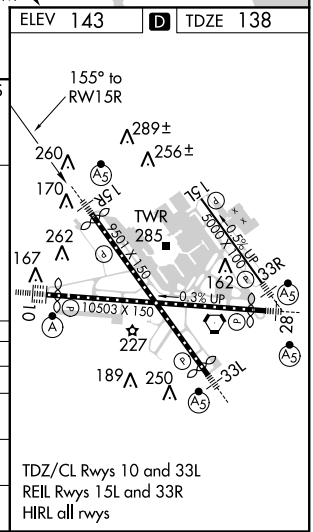
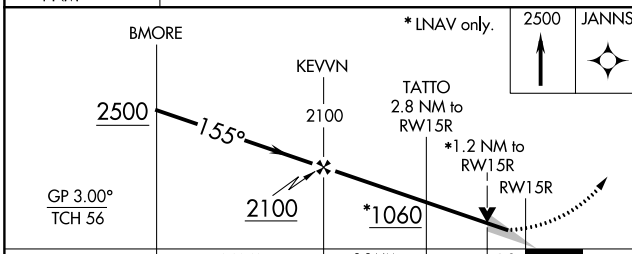
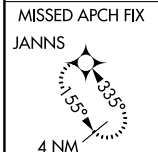
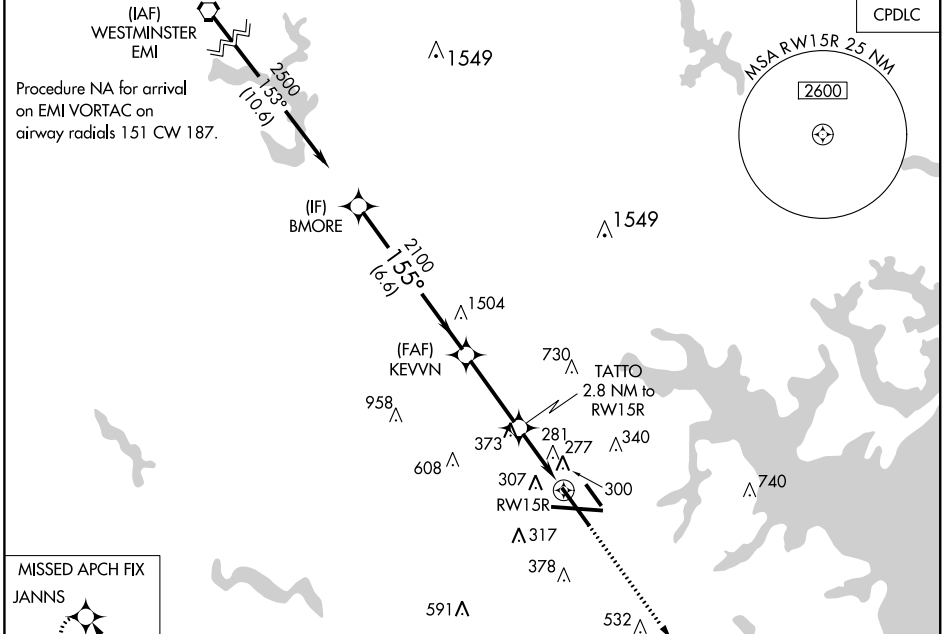
RNAV (GPS) Y RWY 15R

BALTIMORE/WASHINGTON INTL THURGOOD MARSHALL (BWI)

⚠ For uncompensated Baro-VNAV systems, LNAV/VNAV NA below -12°C (11°F) or above 54°C (130°F). For inop MALS, increase LNAV/VNAV all Cats visibility to 1 3/8. DME/DME RNP-0.3 NA.
 **RVR 1800 authorized with use of FD or AP or HUD to DA.

MALS 	MISSED APPROACH: Climb to 2500 direct JANN5 and hold.
----------	---

D-ATIS 115.1 127.8	POTOMAC APP CON (020°-100°) 119.7 290.475 (131°-180°) (101°-130°) 128.7 307.9 (181°-019°)	BALTIMORE TOWER 119.4 257.8	GND CON 121.9	CLNC DEL 118.05
------------------------------	---	---------------------------------------	-------------------------	---------------------------



CATEGORY	A	B	C	D
LPV DA	**338/24		200 (200-1/2)	
LNAV/VNAV DA	557/46		419 (500-1)	
LNAV MDA	560/24	422 (500-1/2)	560/40	422 (500-3/4)
C CIRCLING	640-1 497 (500-1)	660-1 517 (600-1)	700-1 1/2 557 (600-1 1/2)	880-2 1/4 737 (800-2 1/4)

TDZ/CL Rwy 10 and 33L
 REIL Rwy 15L and 33R
 HIRL all rwy

NE-3, 31 JAN 2019 to 28 FEB 2019

NE-3, 31 JAN 2019 to 28 FEB 2019