

# CLTCH TWO DEPARTURE (RNAV)

NE-3, 31 JAN 2019 to 28 FEB 2019

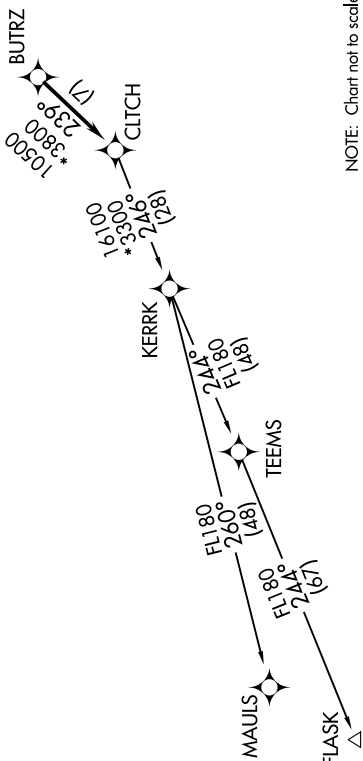
D-ATIS  
134.85  
CLNC DEL  
135.7 317.8  
CPDLC  
GND.CON  
121.9 317.8 (EAST)  
121.625 348.6 (WEST)  
DULLES TOWER  
120.1 317.8 (Rwy 1R/19L)  
120.25 348.6 (Rwy 1C/19C)  
134.425 348.6 (Rwys 1L/19R, 12/30)  
POTOMAC DEP CON  
126.65 350.2

**TAKEOFF MINIMUMS:**  
Rwys 1L/C/R, 19L/C/R, 30:  
Standard with minimum climb  
of 500' per NM to 820.



**TOP ALTITUDE:**  
3000

NOTE: RNAV 1.  
NOTE: RADAR required.  
NOTE: DME/DME/IRU or GPS required.



NOTE: Chart not to scale.

## DEPARTURE ROUTE DESCRIPTION

**TAKEOFF RWY 1L, 1C, 1R, 19C, 19L, 19R, 30:**  
Climb on heading assigned by ATC, expect RADAR vectors to BUTRZ, then on track 239° to CLTCH, thence. . . .

. . . . on assigned transition. Maintain 3000. Expect clearance to filed altitude within ten (10) minutes after departure.

**FLASK TRANSITION (CLTCH2.FLASK)**  
**MAULS TRANSITION (CLTCH2.MAULS)**

# CLTCH TWO DEPARTURE (RNAV)

(CLTCH2.CLTCH) 29MARI8

NE-3, 31 JAN 2019 to 28 FEB 2019