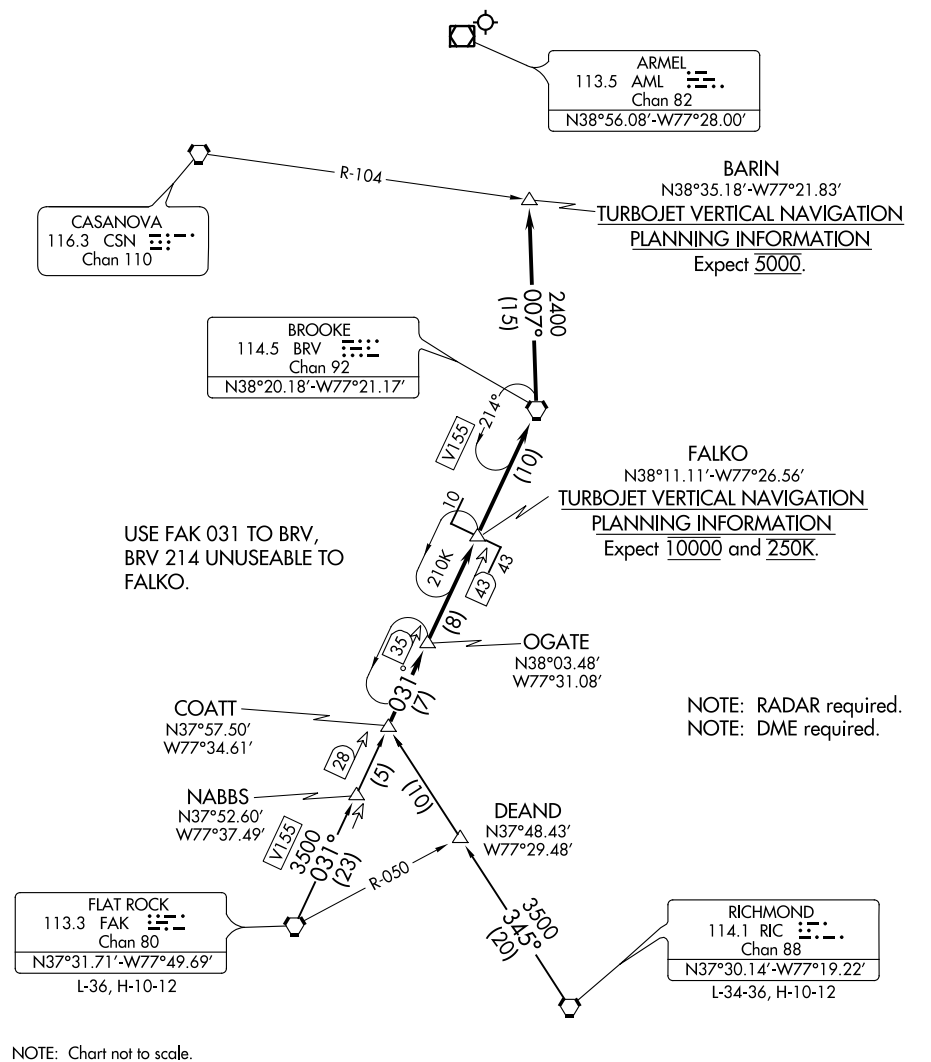


COATT FIVE ARRIVAL

POTOMAC APP CON
128.525 306.925
DULLES D-ATIS 134.85



USE FAK 031 TO BRV,
BRV 214 UNUSEABLE TO
FALCO.

NOTE: RADAR required.
NOTE: DME required.

NOTE: Chart not to scale.

FLAT ROCK TRANSITION (FAK.COATT5): From over FAK VORTAC on FAK R-031 to COATT. Thence

RICHMOND TRANSITION (RIC.COATT5): From over RIC VORTAC on RIC R-345 to COATT. Thence

. . . . From over COATT on FAK R-031 to BRV VORTAC, then on BRV R-007 to BARIN. Expect radar vectors to final approach course after BARIN.

NE-3, 31 JAN 2019 to 28 FEB 2019

NE-3, 31 JAN 2019 to 28 FEB 2019