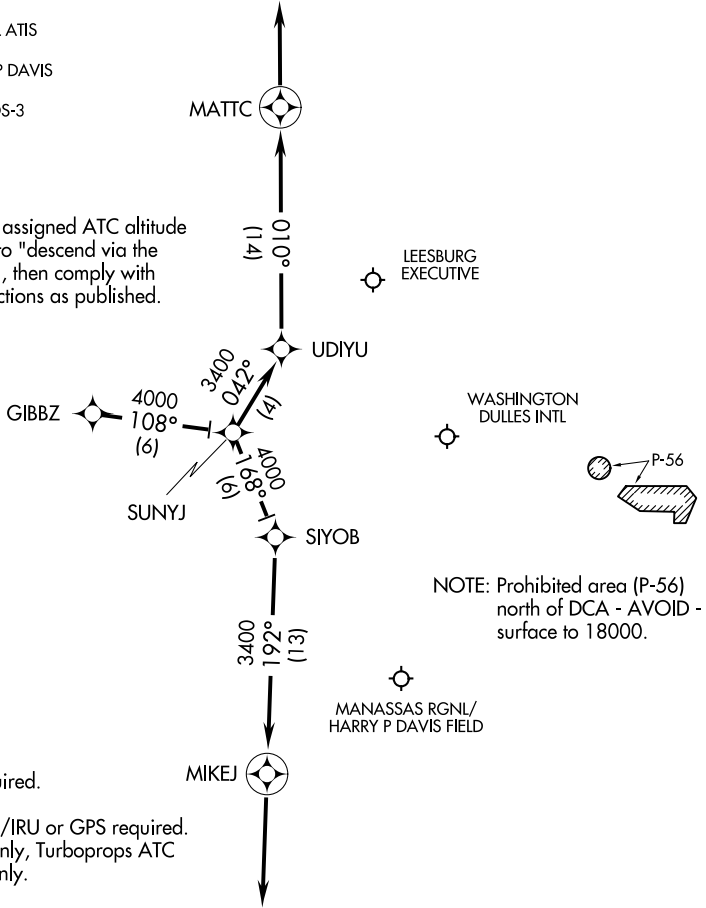


GIBBZ TWO ARRIVAL (RNAV) Arrival Routes

WASHINGTON, DC

POTOMAC APP CON
 120.45 306.925 343.775
 WASHINGTON DULLES INTL ATIS
 134.85
 MANASSAS RGNL/HARRY P DAVIS
 FIELD ATIS 125.175
 LEESBURG EXECUTIVE AWOS-3
 125.225

NOTE: Maintain last assigned ATC altitude until cleared to "descend via the GIBBZ TWO", then comply with altitude restrictions as published.



NOTE: Radar required.
 NOTE: RNAV 1.
 NOTE: DME/DME/IRU or GPS required.
 NOTE: Turbojets only, Turboprops ATC assigned only.

NOTE: Chart not to scale.

ARRIVAL ROUTE DESCRIPTION

LANDING IAD RWYS 19C, 19L, 19R: From over GIBBZ on track 108° to SUNYJ, then on track 042° to UDIYU, then on track 010° to MATTC, then on track 010°, expect radar vectors to final approach course.

LANDING IAD RWYS 1C, 1L, 1R, 30: From over GIBBZ on track 108° to SUNYJ, then on track 168° to SIYOB, then on track 192° to MIKEJ, then on track 192°, expect radar vectors to final approach course.

LANDING IAD RWY 12 (FROM HVQ AND BKW TRANSITIONS): Expect radar vectors to final approach course after KILMR.

LANDING IAD RWY 12, JYO, AND HEF (FROM MGW TRANSITION): Expect radar vectors to final approach course after IGGY.

LANDING JYO AND HEF (FROM HVQ AND BKW TRANSITIONS): Expect radar vectors to final approach course after KILMR.

NE-3, 31 JAN 2019 to 28 FEB 2019

NE-3, 31 JAN 2019 to 28 FEB 2019