

LOC/DME I-SGC 110.1 Chan 38	APP CRS 191°	Rwy ldg 11500 TDZE 302 Apt Elev 313
---	------------------------	--

ILS RWY 19L (SA CAT II)

WASHINGTON DULLES INTL (IAD)

Simultaneous approach authorized with Rwy 19C or 19R.
 Reduced lighting: Requires specific OPSPEC, MSPEC, or LOA approval and use of Autoland or HUD to touchdown.

MALSRL

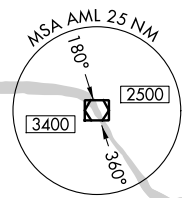
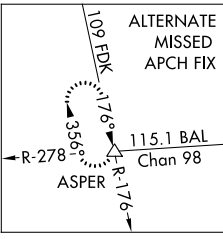
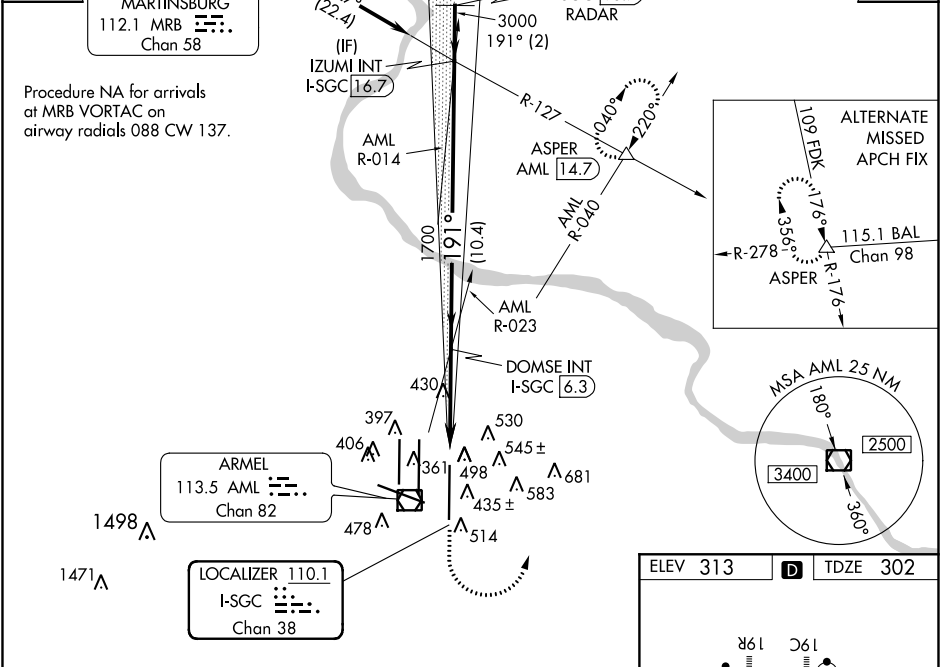
MISSED APPROACH: Climb to 800 then climbing left turn to 3000 on heading 010° and AML VOR/DME R-040 to ASPER INT/AML 14.7 DME and hold.

POTOMAC APP CON 120.45 306.925 (241°-330°) 128.525 306.925 (091°-240°) 126.1 338.25 (331°-090°)		DULLES TOWER 120.1 317.8 (Rwy 1R/19L) 120.25 348.6 (Rwy 1C/19C) 134.425 348.6 (Rwys 1L/19R and 12/30)		GND CON 121.9 317.8 (EAST) 121.625 348.6 (WEST)	CLNC DEL 135.7 317.8
---	--	---	--	---	--------------------------------

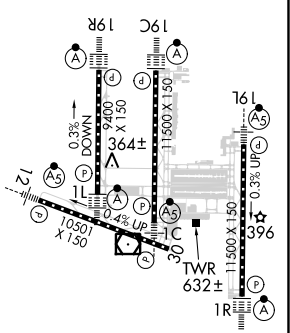
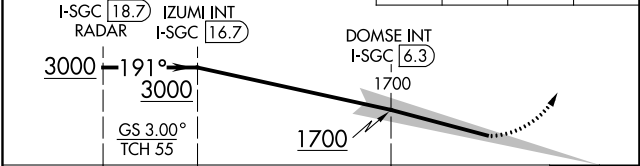
D-ATIS **134.85**

IAF MARTINSBURG 112.1 MRB Chan 58

CPDLC



ELEV 313	D	TDZE 302
VGSi and ILS glidepath not coincident (VGSi Angle 3.00/TCH 75). 800 3000 hdg 010° AML R-040 ASPER 		



CATEGORY	A	B	C	D
S-ILS 19L		RA 102/12	100 DA 402	

CATEGORY II ILS - SPECIAL AIRCREW & AIRCRAFT CERTIFICATION REQUIRED

TDZ/CL Rwys 1C, 1L, 1R, 12, 19C and 19R
 REIL Rwy 30
 HIRL all Rwys

NE-3, 31 JAN 2019 to 28 FEB 2019

NE-3, 31 JAN 2019 to 28 FEB 2019