

LOC/DME I-HSU <b>110.75</b> Chan <b>44 (Y)</b>	APP CRS <b>191°</b>	Rwy Idg TDZE Apt Elev <b>9400</b> <b>278</b> <b>312</b>
--	------------------------	--

# ILS RWY 19R (CAT II & III)

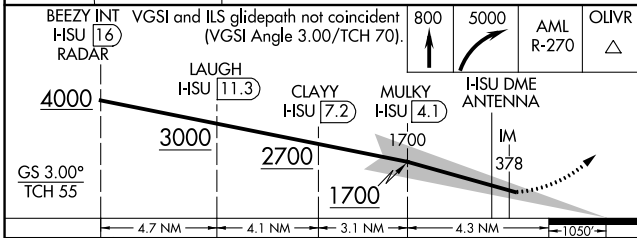
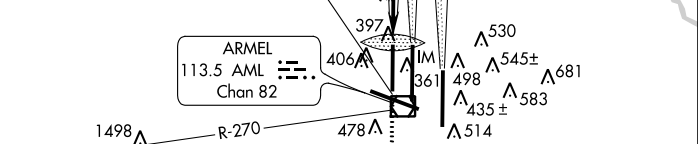
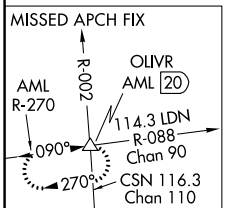
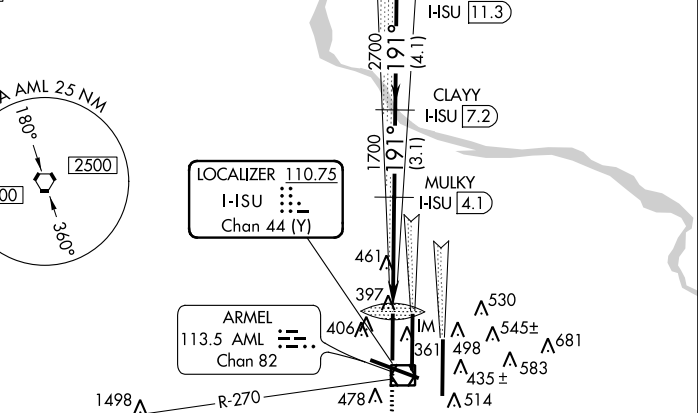
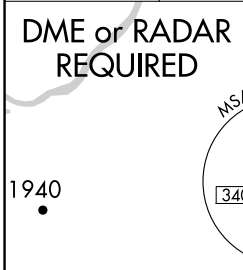
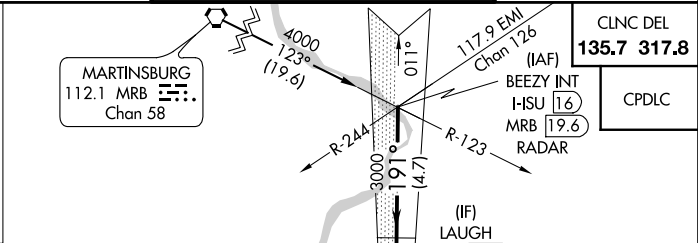
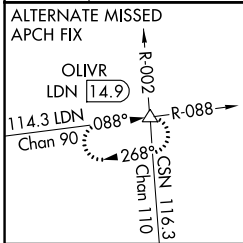
WASHINGTON DULLES INTL (IAD)

**Simultaneous approach authorized with ILS or LOC/DME**  
 Rwy 19C, ILS Rwy 19C (Cat II), ILS Rwy 19C (Cat III),  
 Rwy 19L.



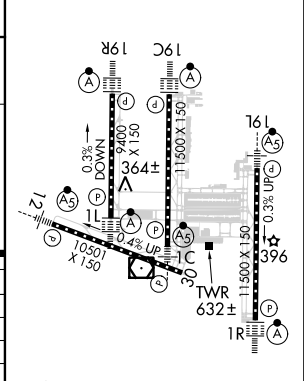
**MISSED APPROACH:** Climb to 800 then climbing right turn to 5000 via AML VOR/DME R-270 to OLIVR INT/AML 20 DME and hold, continue climb-in-hold to 5000.

D-ATIS <b>134.85</b>	POTOMAC APP CON <b>120.45 306.925</b> (241°-330°) <b>128.525 306.925</b> (091°-240°) <b>126.1 338.25</b> (331°-090°)	DULLES TOWER <b>120.1 317.8</b> (Rwy 1R/19L) <b>120.25 348.6</b> (Rwy 1C/19C) <b>134.425 348.6</b> (Rwys 1L/19R and 12/30)	GND CON <b>121.9 317.8</b> (EAST) <b>121.625 348.6</b> (WEST)
-------------------------	---	---	---



ELEV 312	<b>D</b>	TDZE 278
----------	----------	----------

CATEGORY	A	B	C	D
S-ILS 19R	CAT II RA 103/12 100 DA 378			
S-ILS 19R	CAT IIIa RVR 07			
S-ILS 19R	CAT IIIb RVR 06			
S-ILS 19R	CAT IIIc NA			



## CATEGORY II & III ILS - SPECIAL AIRCREW & AIRCRAFT CERTIFICATION REQUIRED

TDZ/CL Rwys 1C, 1L, 1R, 12, 19C and 19R  
 REIL Rwy 30  
 HIRL all Rwys

NE-3, 31 JAN 2019 to 28 FEB 2019

NE-3, 31 JAN 2019 to 28 FEB 2019