

LOC I-OSZ 111.3	APP CRS 011°	Rwy ldg 11500
		TDZE 286
		Apt Elev 313

ILS RWY 1C (SA CAT II)

WASHINGTON DULLES INTL (IAD)

▼ DME from AML VOR/DME. Simultaneous reception of I-OSZ and AML DME required.
▲ Simultaneous approach authorized with ILS or LOC/DME Rwy 1L, ILS Rwy 1L (Cat II), ILS Rwy 1L (Cat III), ILS or LOC Rwy 1R, ILS Rwy 1R (Cat II), ILS Rwy 1R (Cat III).
 Reduced lighting: Requires specific OPSPEC, MSPEC, or LOA approval and use of autoland or HUD to touchdown. DME required.

MALSR



MISSED APPROACH: Climb to 3000 on heading 011° and FDK VOR R-200 to FDK VOR and hold.

POTOMAC APP CON

120.45	306.925	(241°-330°)
128.525	306.925	(091°-240°)
126.1	338.25	(331°-090°)

DULLES TOWER

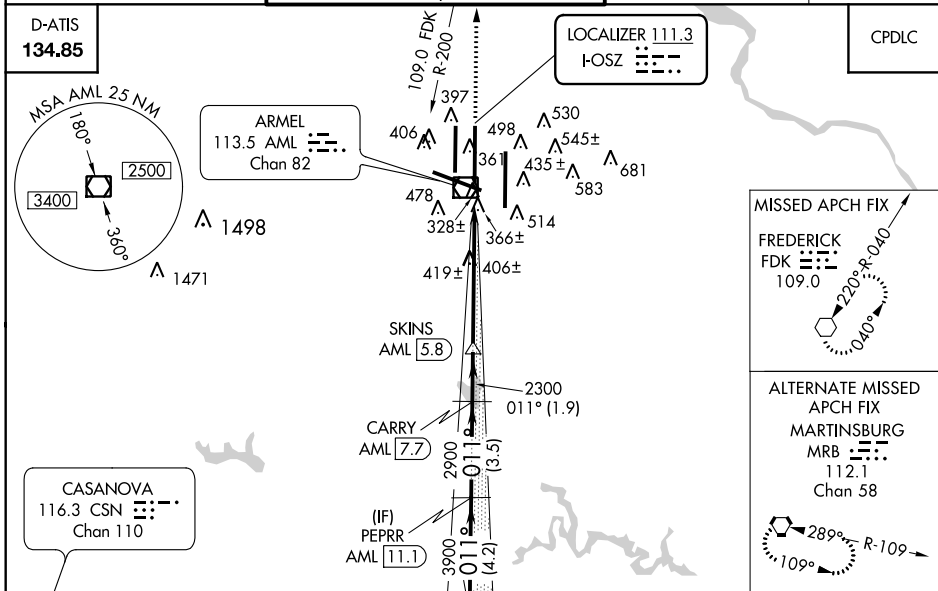
120.1	317.8	(Rwys 1R/19L)
120.25	348.6	(Rwy 1C/19C)
134.425	348.6	(Rwys 1L/19R and 12/30)

GND CON

121.9	317.8	(EAST)
121.625	348.6	(WEST)

CLNC DEL

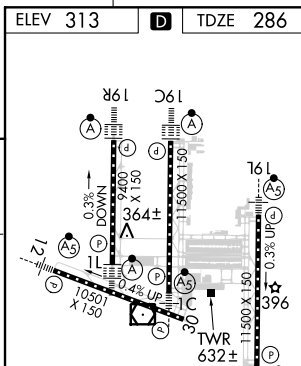
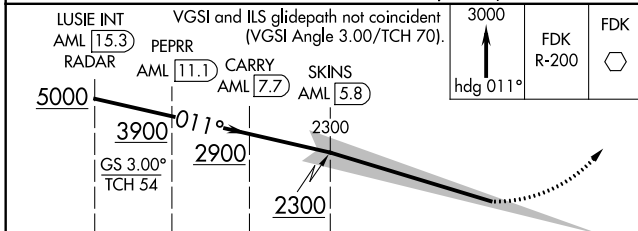
135.7	317.8
--------------	--------------



NE-3, 31 JAN 2019 to 28 FEB 2019

NE-3, 31 JAN 2019 to 28 FEB 2019

ELEV 313	D	TDZE 286
----------	----------	----------



CATEGORY	A	B	C	D
S-ILS 1C	RA 104/12 100 DA 386			

CATEGORY II ILS - SPECIAL AIRCREW & AIRCRAFT CERTIFICATION REQUIRED

TDZ/CL Rwys 1C, 1L, 1R, 12, 19C and 19R
 REIL Rwy 30
 HIRL all Rwys