

LOC/DME I-OIU 110.75 Chan 44 (Y)	APP CRS 011°	Rwy Idg TDZE Apt Elev	9400 296 312
--	------------------------	-----------------------------	---

ILS RWY 1L (CAT II & III)

WASHINGTON DULLES INTL (IAD)

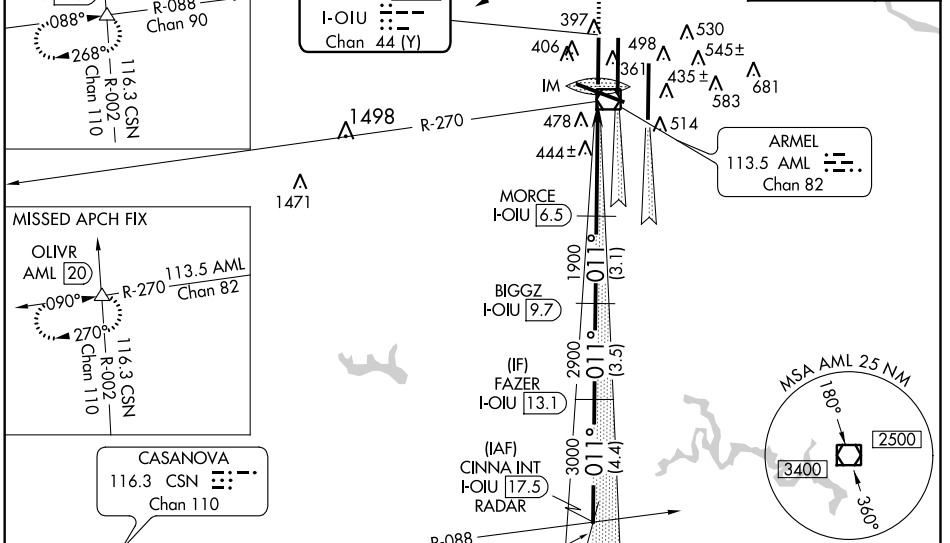
Simultaneous approach authorized with ILS or LOC/DME Rwy 1C, ILS Rwy 1C (Cat III), RNAV (GPS) Y Rwy 1C, ILS or LOC Rwy 1R, ILS Rwy 1R (Cat II), ILS Rwy 1R (Cat III), RNAV (GPS) Y Rwy 1R.

ALSIF-2

MISSED APPROACH: Climb to 800 then climbing left turn to 5000 via heading 240° and AML VOR/DME R-270 to OLIVR INT/AML 20 DME and hold, continue climb-in-hold to 5000.

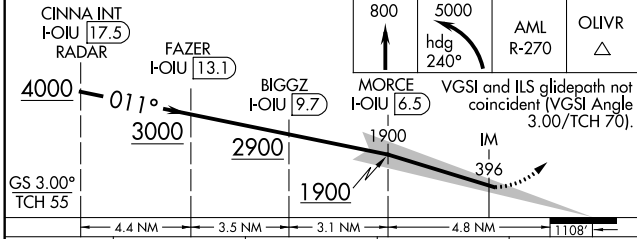
D-ATIS 134.85	POTOMAC APP CON 120.45 306.925 (241°-330°) 128.525 306.925 (091°-240°) 126.1 338.25 (331°-090°)	DULLES TOWER 120.1 317.8 (Rwy 1R/19L) 120.25 348.6 (Rwy 1C/19C) 134.425 348.6 (Rwys 1L/19R and 12/30)	GND CON 121.9 317.8 (EAST) 121.625 348.6 (WEST)
-------------------------	---	---	---

ALTERNATE MISSED APCH FIX OLIVR LDN [14.9] 114.3 LDN R-088 Chan 90 088° 268° R-002 Chan 110 116.3 CSN	LOCALIZER 110.75 I-OIU Chan 44 (Y)	CLNC DEL 135.7 317.8	CPDLC
--	--	--------------------------------	-------



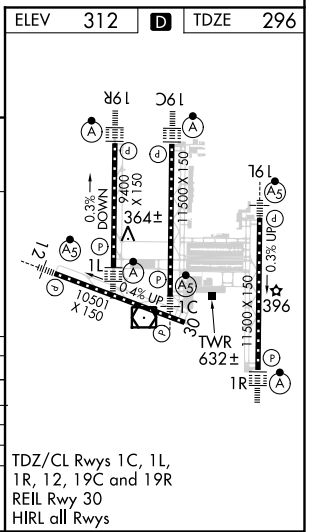
ELEV 312	D	TDZE 296
----------	----------	----------

DME or RADAR REQUIRED



CATEGORY	A	B	C	D
S-ILS 1L	CAT II RA 97/12		100 DA 396	
S-ILS 1L	CAT IIIa		RVR 07	
S-ILS 1L	CAT IIIb		RVR 06	
S-ILS 1L	CAT IIIc		NA	

CATEGORY II & III ILS - SPECIAL AIRCREW & AIRCRAFT CERTIFICATION REQUIRED



TDZ/CL Rwys 1C, 1L, 1R, 12, 19C and 19R
REIL Rwy 30
HIRL all Rwys

NE-3, 31 JAN 2019 to 28 FEB 2019

NE-3, 31 JAN 2019 to 28 FEB 2019