

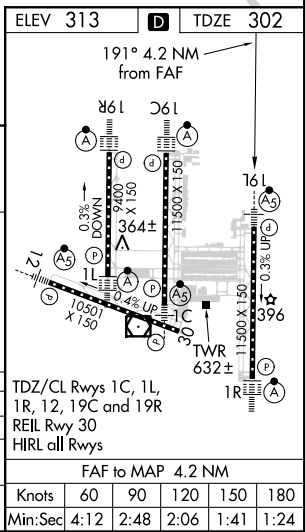
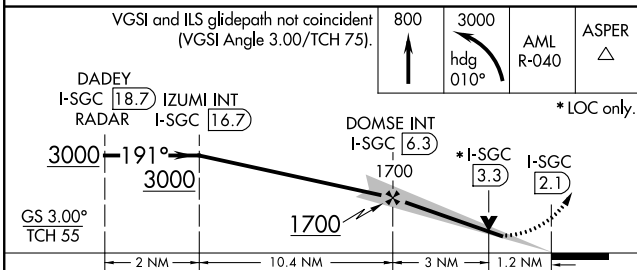
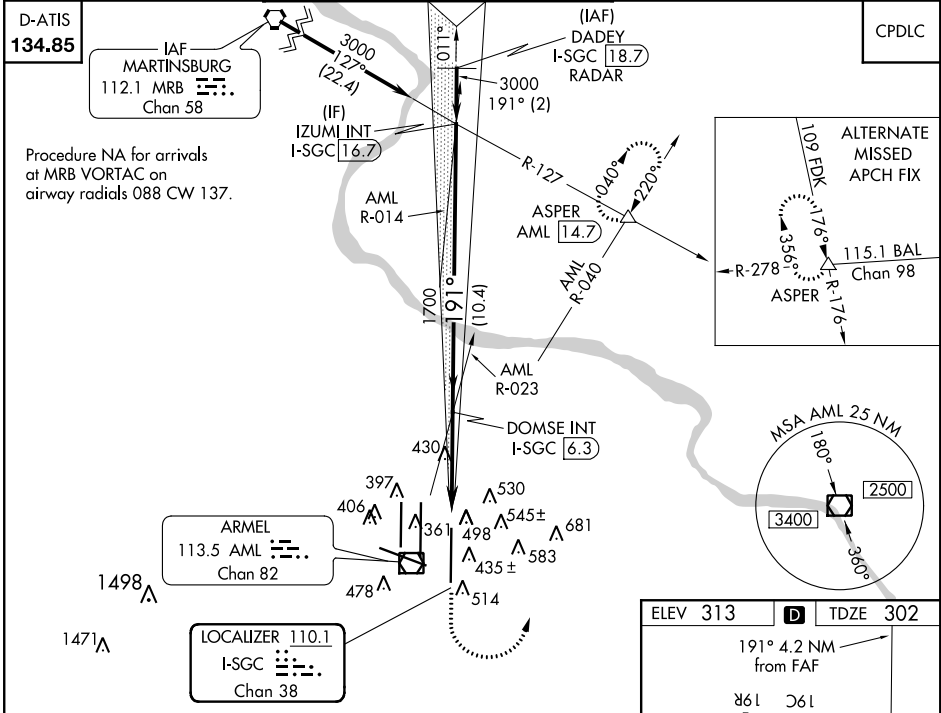
LOC/DME I-SGC 110.1 Chan 38	APP CRS 191°	Rwy Idg 11500 TDZE 302 Apt Elev 313
--	------------------------	--

ILS or LOC RWY 19L

WASHINGTON DULLES INTL (IAD)

<p>⚠ Simultaneous approach authorized with Rwy 19C or 19R. **1800 RVR authorized with the use of FD or AP or HUD to DA.</p>	MALSR 	MISSED APPROACH: Climb to 800 then climbing left turn to 3000 on heading 010° and AML VOR/DME R-040 to ASPER INT/AML 14.7 DME and hold.
	<p>POTOMAC APP CON 120.45 306.925 (241°-330°) 128.525 306.925 (091°-240°) 126.1 338.25 (331°-090°)</p>	

DULLES TOWER 120.1 317.8 (Rwy 1R/19L) 120.25 348.6 (Rwy 1C/19C) 134.425 348.6 (Rwys 1L/19R and 12/30)	GND CON 121.9 317.8 (EAST) 121.625 348.6 (WEST)	CLNC DEL 135.7 317.8
---	---	--------------------------------



CATEGORY	A	B	C	D
S-ILS 19L	** 502/24 200 (200-½)			
S-LOC 19L	740/24 438 (500-½)	740/40 438 (500-¾)	740/50 438 (500-1)	
CIRCLING	940-1 627 (700-1)	940-1¾ 627 (700-1¾)	940-2 627 (700-2)	

NE-3, 31 JAN 2019 to 28 FEB 2019

NE-3, 31 JAN 2019 to 28 FEB 2019